

A

B

C

D

A

B

C

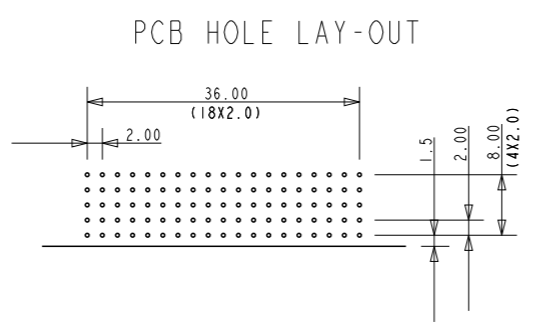
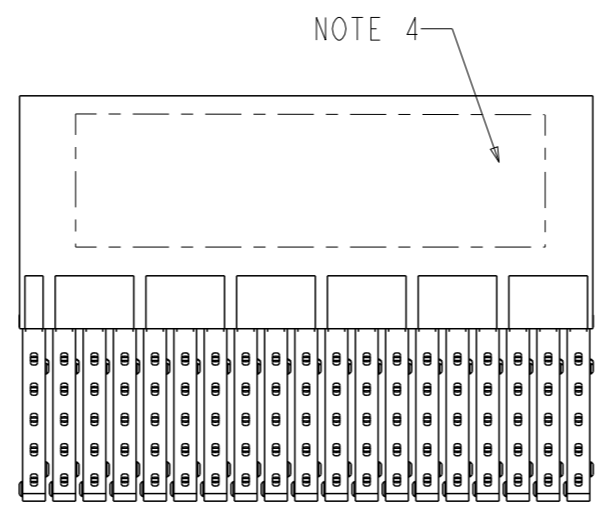
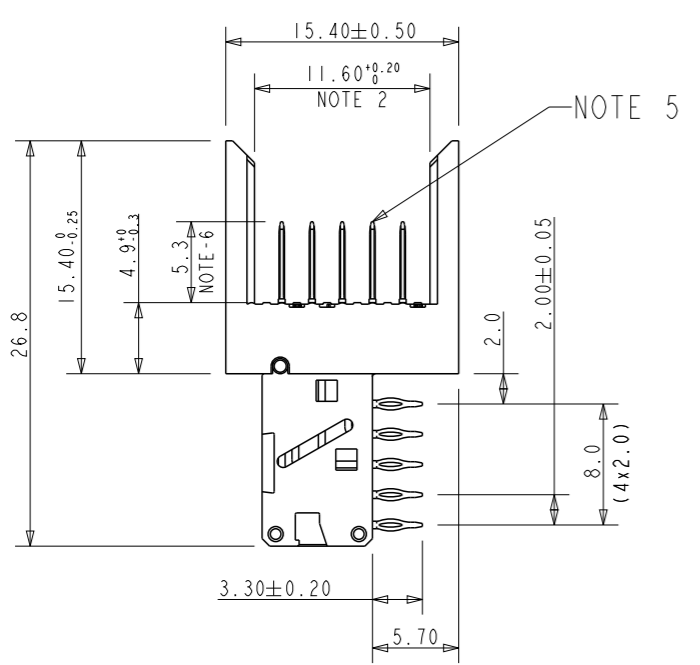
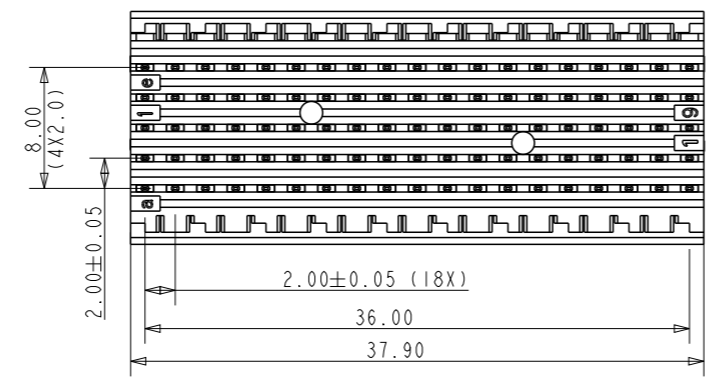
D

PERFORMANCE CHARACTERISTICS :

CURRENT RATING : 1.5A AT 20°C (FULLY LOADED)  
 1A AT 70°C (FULLY LOADED)  
 RATED VOLTAGE : 500V AC (CONT / CONT)  
 OPERATING TEMPERATURE : -55°C TO 125°C  
 CONTACT RESISTANCE : 25mΩ MAX.  
 INSERTION FORCE : 0.75 N MAX / CONT  
 EXTRACTION FORCE : 0.15 N MIN / CONT  
 INSULATION RESISTANCE : 10<sup>4</sup> MΩ MIN.

NOTES :

- UL APPROVED WITH USR AND CNR.
- MEASURED AT THE BOTTOM.
- MATERIAL CONTACT : PHOSPHORBRONZE.  
HOUSING : LCP 30% GLASS-FILLED.
- CONNECTOR PRINTED WITH P/N AND DATE CODES.
- FOR ACTUAL CONTACT LOADINGS, SEE LOADING PATTERN MATING SIDE.
- 4 = LEVEL 1 (5.30)  
5 = LEVEL 2 (6.80)  
6 = LEVEL 3 (8.30)



- LEAD FREE INDICATOR : LF = LEAD FREE
- 'HM2J7IPE5110' PERFORMANCE LEVEL INDICATOR (Ref DWG No BS,C ,201844,003)
- FOR RECOMMENDED PTH DIMENSIONS REFER DRAWING : BS,A ,201572,001
- THIS PRODUCT (LF) MEETS EUROPEAN UNION DIRECTIVES AND OTHER COUNTRY REGULATIONS AS DESCRIBED IN GS-22-008

LOADING PATTERN : MATING SIDE

F	0	0	0	0	0	0	0	0	0	0	0	0	0	0	0	0	0	0	0
E	4	4	4	4	4	4	4	4	4	4	4	4	4	4	4	4	4	4	4
D	4	4	4	4	4	4	4	4	4	4	4	4	4	4	4	4	4	4	4
C	4	4	4	4	4	4	4	4	4	4	4	4	4	4	4	4	4	4	4
B	4	4	4	4	4	4	4	4	4	4	4	4	4	4	4	4	4	4	4
A	4	4	4	4	4	4	4	4	4	4	4	4	4	4	4	4	4	4	4
Z	0	0	0	0	0	0	0	0	0	0	0	0	0	0	0	0	0	0	0
	1	2	3	4	5	6	7	8	9	10	11	12	13	14	15	16	17	18	19



Copyright FCI.

rev	ecn no	dr	date
A	CONV R0	GNV	2002-08-28
B	EC B20190	MF	2002-11-22
C	105-0108	AB	2005-06-23
D	106-0107	AB	2006-07-15
E	108-0050	AB	2008-04-24
F	110-0098	GT	2010-04-19
G	111-0044	GT	2011-02-28

www.fciconnect.com		surface <input checked="" type="checkbox"/> ISO 1302	tolerance std <input checked="" type="checkbox"/> ISO 406 <input type="checkbox"/> ISO 1101	projection	mm
TOLERANCES UNLESS OTHERWISE SPECIFIED					
Dr	M.Fret	2001-07-26	ANGULAR	0.X	±0.2
Eng	M.Fret	2001-07-26	LINEAR	0.XX	±0.1
Chr	Alex Babu	2008-04-24	0° ±1°	0.XXX	±0.05
Appr	Alex Babu	2008-04-24	Product family	MILLIPACS	Spec ref
FCI logo			MPACS RA HDR		dwg no
			type B (19 POS), not shielded		BSC202767019
			catalog no	HM2J7IPE5110----	CUSTOMER COPY
					sheet 1 of 1