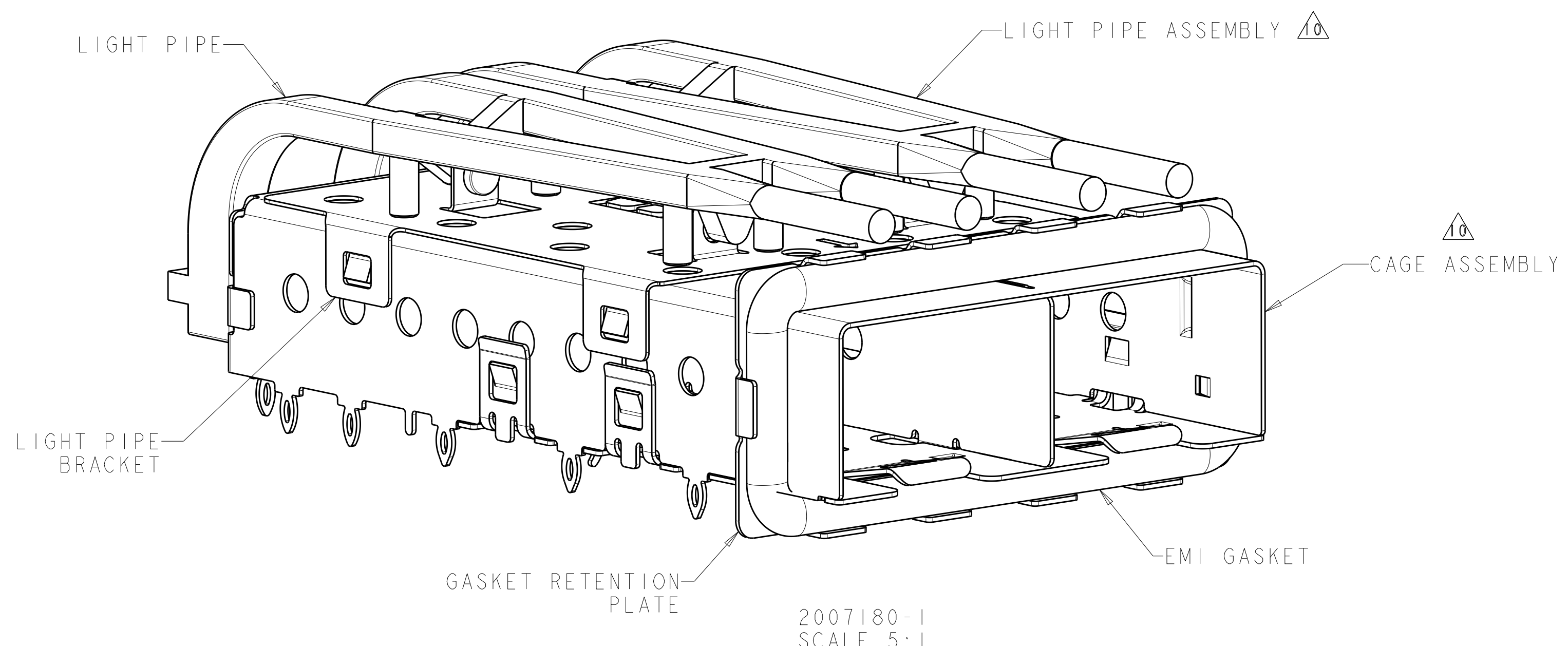
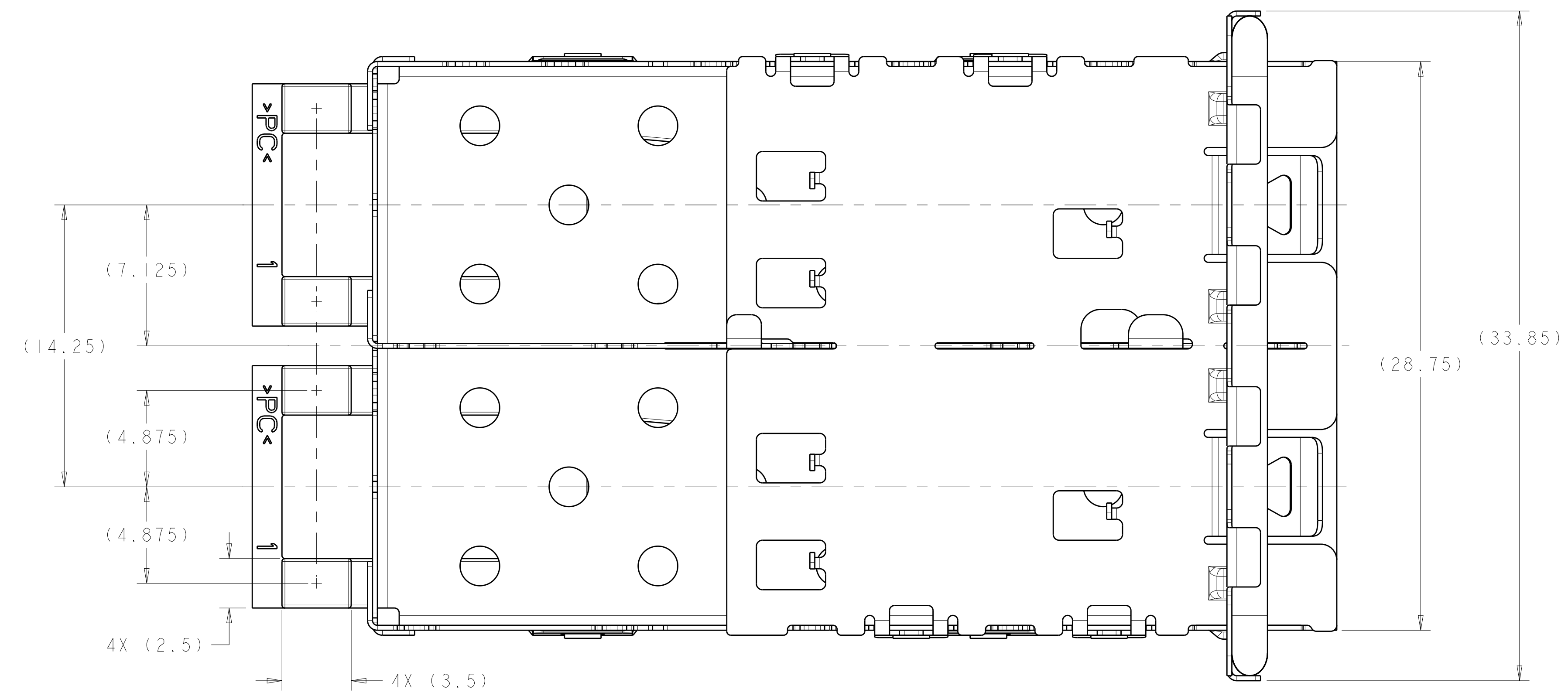
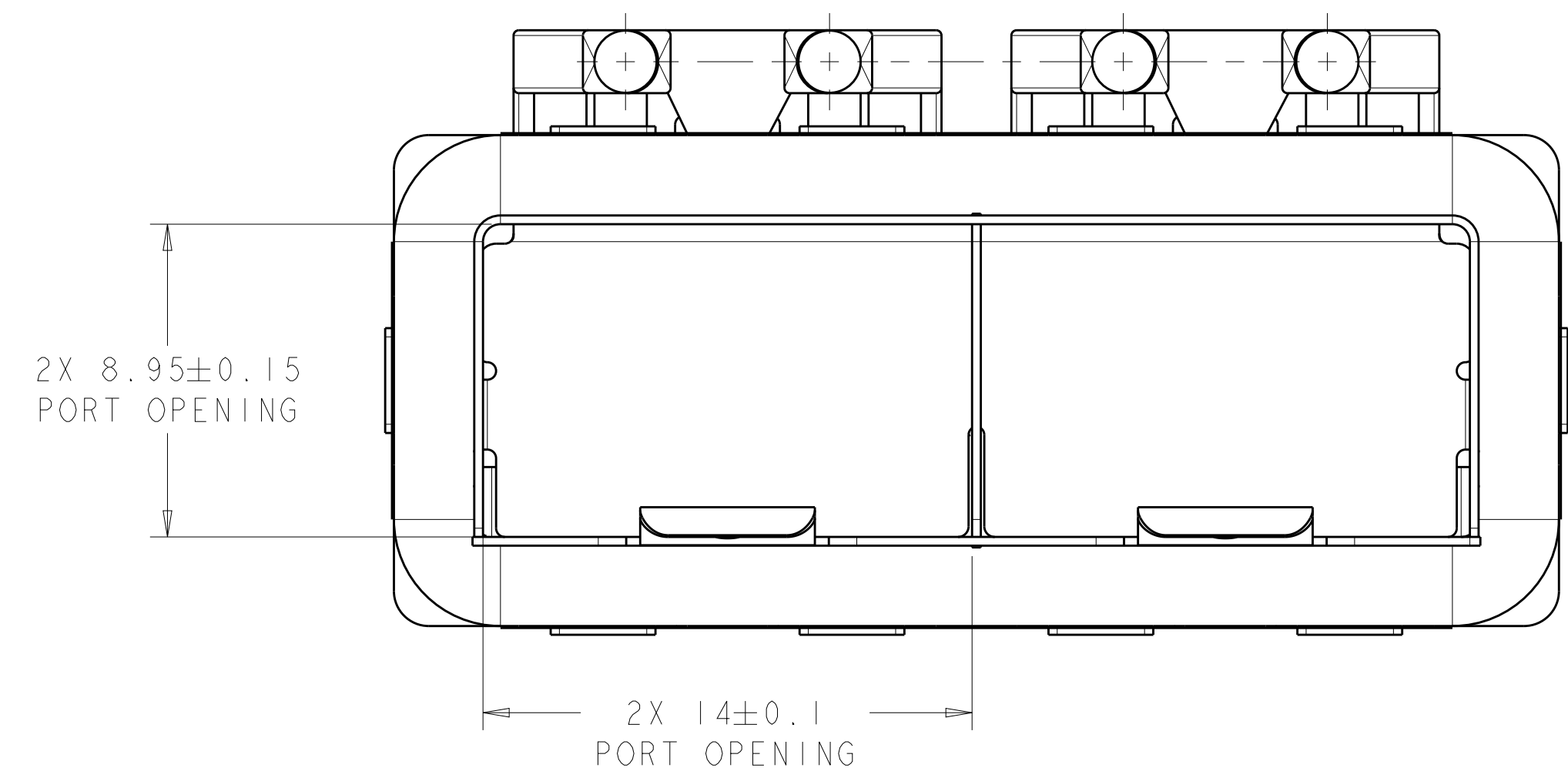
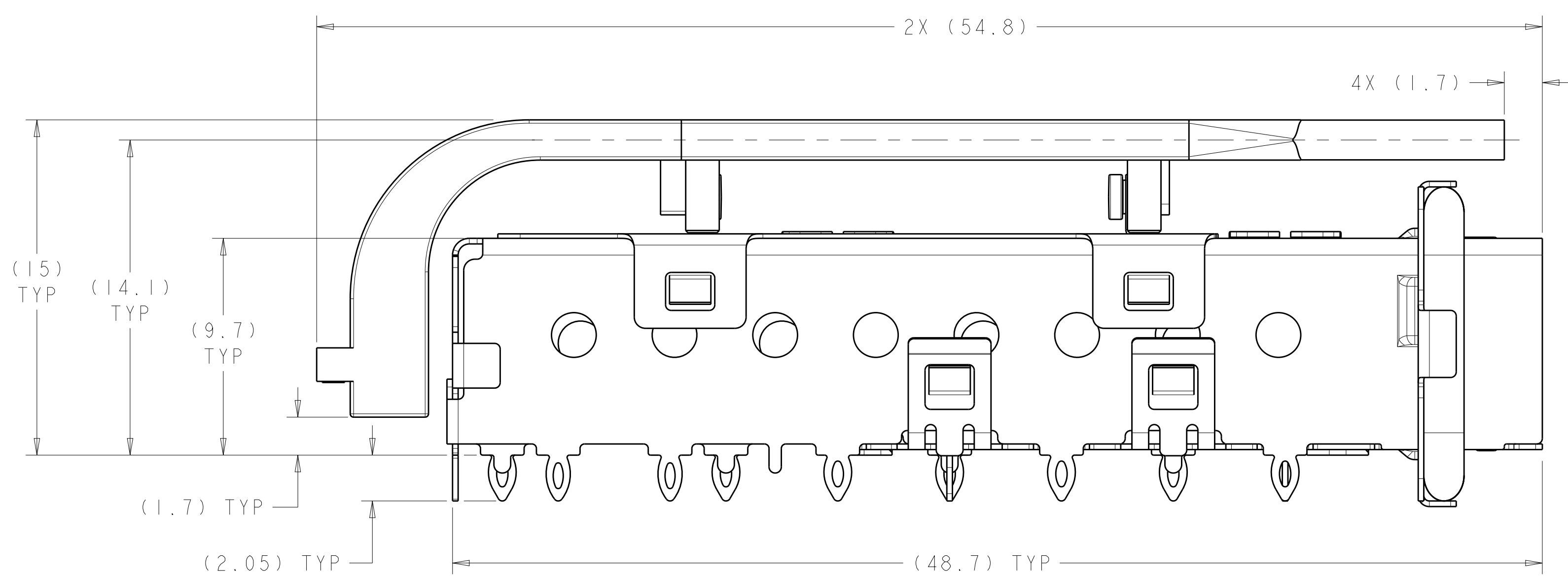


LOC	DIST	REVISIONS			
P	LTN	DESCRIPTION	DATE	DMN	APVD
C1		REVISED PER ECO-11-004835	11MAR2011	RK	HMR
D		REVISED PER ECO-12-014021	07DEC2012	TD	AC



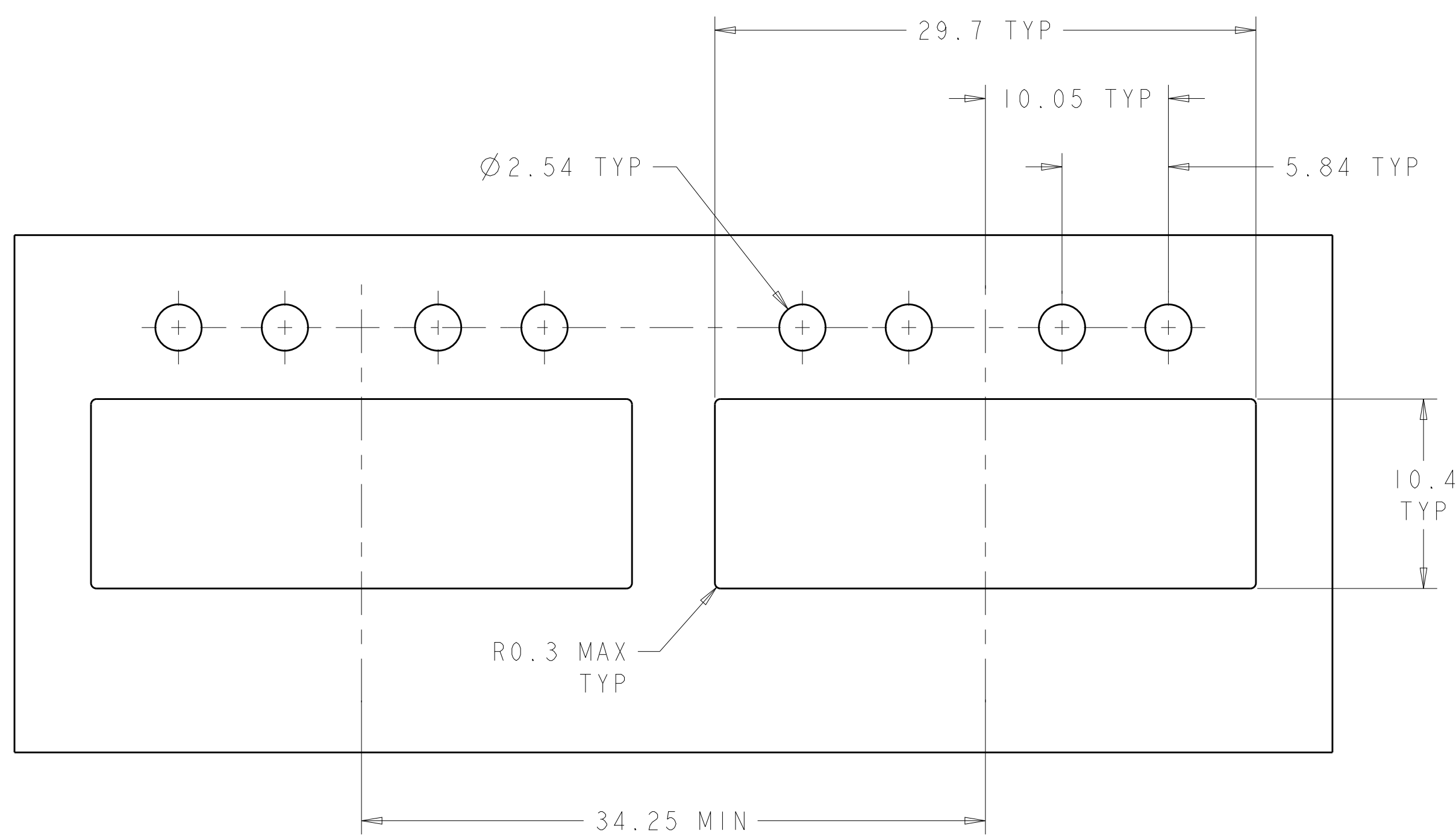
2007180-1  
SCALE 5:1

- △ MATERIAL:  
 CAGE ASSEMBLY - 0.25mm THICK NICKEL SILVER ALLOY  
 GASKET RETENTION PLATE - STAINLESS STEEL  
 EMI GASKET - PLATED FILLED SILICONE  
 LIGHT PIPE BRACKET - STAINLESS STEEL  
 LIGHT PIPE - POLYCARBONATE, CLEAR
- △ DATUM AND BASIC DIMENSION ESTABLISHED BY CUSTOMER.
- 3. MATES WITH SFP MSA COMPLIANT TRANSCEIVERS.
- △ PADS AND VIAS CHASSIS GROUND.
- 5. INTERPRETATION OF DATUM REFERENCE FRAME IN ACCORDANCE WITH SECT 4.4.1.1 OF ASME Y14.5M-1994.
- △ MINIMUM PC BOARD THICKNESS = 1.50mm.
- △ HOLE PATTERN REPEATS FOR EACH PORT. SPACING BETWEEN PORTS IS 14.25mm.
- △ REFERENCE APPLICATION SPEC. 114-13120, HOLE A, FOR RECOMMENDED DRILL HOLE DIAMETER AND PLATING THICKNESS.
- △ REFERENCE APPLICATION SPEC. 114-13120, HOLE B, FOR RECOMMENDED DRILL HOLE DIAMETER AND PLATING THICKNESS.
- △ LIGHT PIPE ASSEMBLY SHIPPED UNASSEMBLED TO CAGE ASSEMBLY. CAGE ASSEMBLY TO BE PRESSED INTO THE PCB PRIOR TO ATTACHING THE LIGHT PIPE ASSEMBLY TO THE CAGE.
- 11. PRODUCT COMPLIES WITH SPECIFICATION SFF-8433 IMPROVED PLUGGABLE FORM FACTOR FOR SFP+ GANGED CAGES.

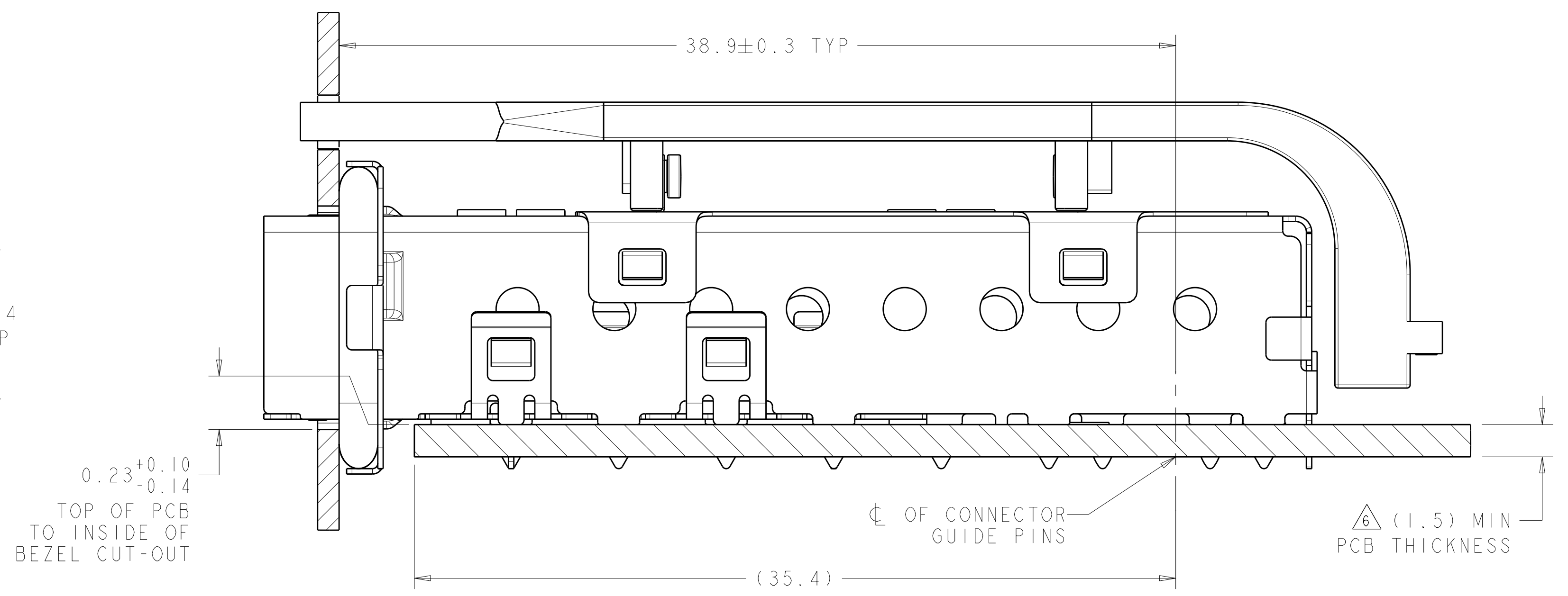
2007180-1  
PART NUMBER

THIS DRAWING IS A CONTROLLED DOCUMENT.		DMN M. E. COWHER 14JUN2007	14JUN2007	TE Connectivity
DIMENSIONS:		CHK M. J. PHILLIPS 14JUN2007	14JUN2007	
mm	TOLERANCES UNLESS OTHERWISE SPECIFIED:	APVD M. J. PHILLIPS	NAME	SFP+ 1X2 CAGE ASSEMBLY PRESS FIT, EMI GASKET WITH LIGHT PIPES
  	0 PLC ±0.1 1 PLC ±0.1 2 PLC ±0.1 3 PLC ±0.1 4 PLC ±0.1 ANGLES ±0.1°	PRODUCT SPEC 108-2364	APPLICATION SPEC 114-13120	RESTRICTED TO
MATERIAL	FINISH	WEIGHT	SIZE A1	Customer Drawing
		SCALE 6:1	SHEET 1 OF 3	REV D

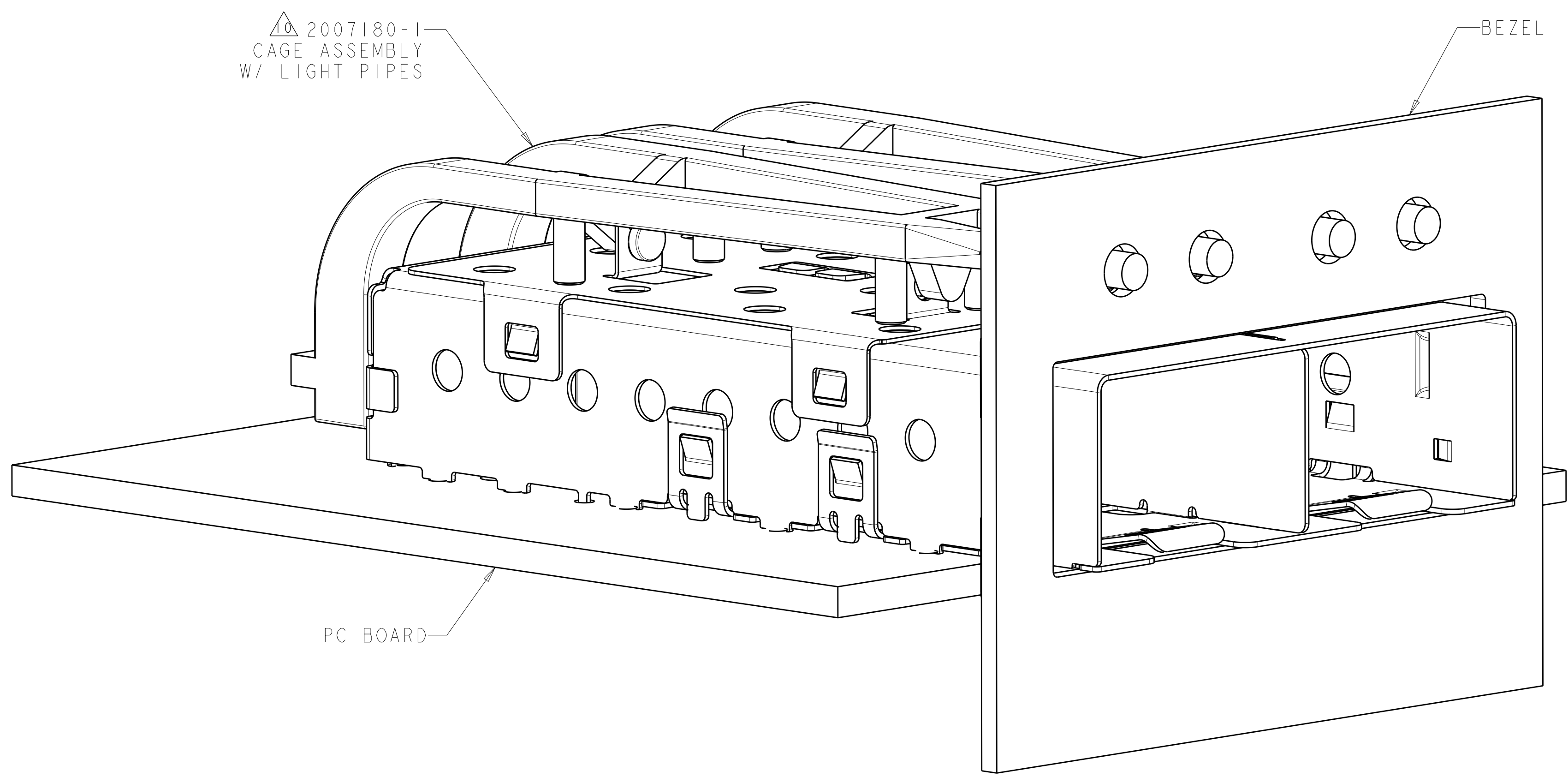
LOC	DIST	REVISIONS			
P	LTN	DESCRIPTION	DATE	DWN	APVD
GP	00	SEE SHEET 1			



RECOMMENDED BEZEL CUTOUT  
 SCALE 4:1



2007180-1  
 MOUNTED ON PCB SHOWN  
 THRU RECOMMENDED BEZEL



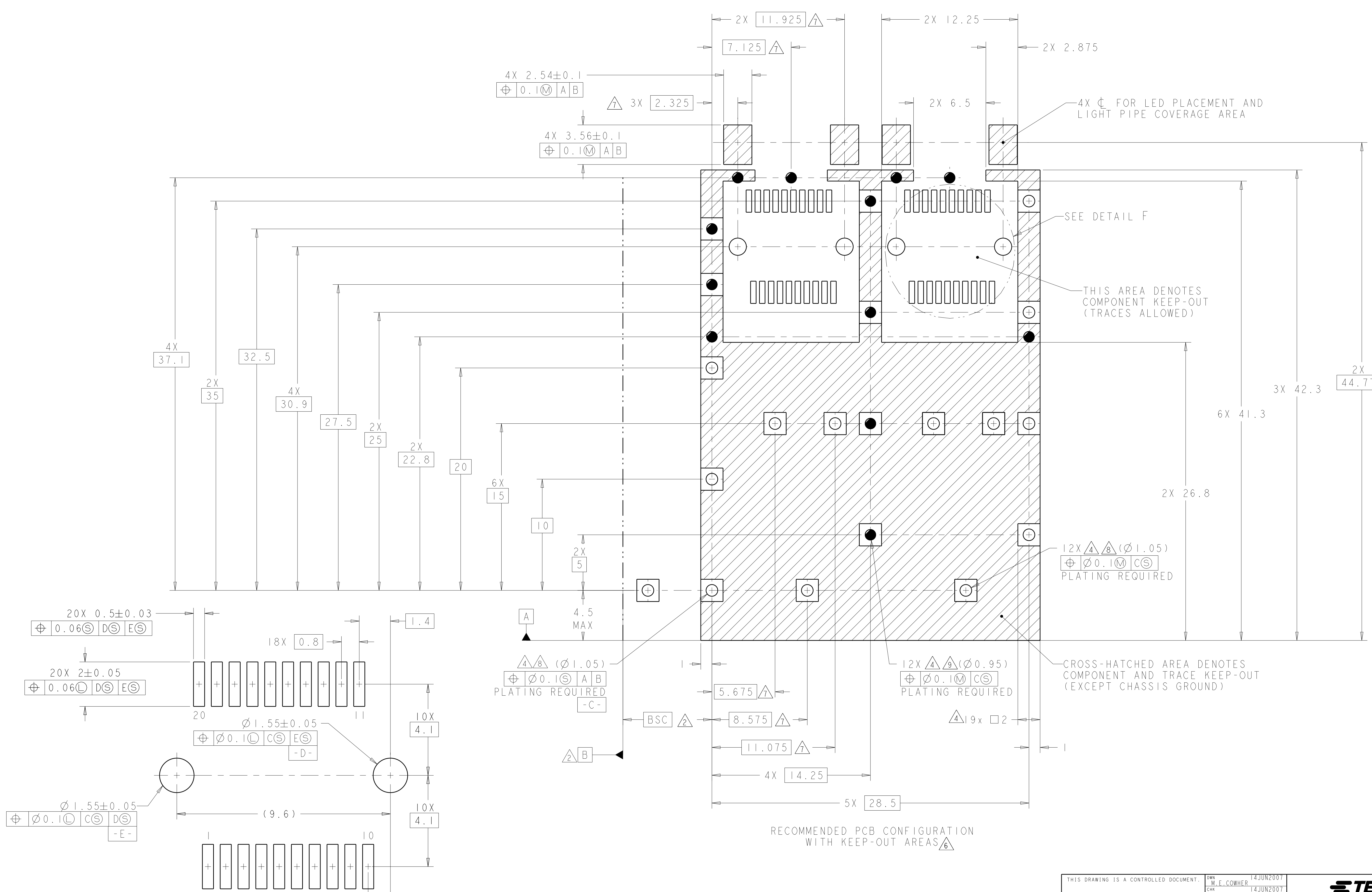
2007180-1  
 MOUNTED ON PCB  
 SHOWN THRU RECOMMENDED BEZEL

THIS DRAWING IS A CONTROLLED DOCUMENT.		DWN: M.E. COWHER 14JUN2007	TE Connectivity NAME: SFP+ 1X2 CAGE ASSEMBLY PRESS FIT, EMI GASKET WITH LIGHT PIPES SIZE: CAGE CODE DRAWING NO A100779C=2007180 RESTRICTED TO:
DIMENSIONS: mm		CHK: M.J. PHILLIPS 14JUN2007	
TOLERANCES UNLESS OTHERWISE SPECIFIED: 0 PLC ±0.1 1 PLC ±0.1 2 PLC ±0.1 3 PLC ±0.1 4 PLC ±0.1 ANGLES ±1°		APVD: M.J. PHILLIPS 14JUN2007 PRODUCT SPEC: 108-2364 APPLICATION SPEC: 114-13120 WEIGHT:	
MATERIAL: FINISH:		Customer Drawing	
SCALE: 6:1			SHEET 2 OF 3
REV D			

LOC	DIST	REV	DATE	BY	APPV
GP	00				

REVISIONS					
NO.	DESCRIPTION	DATE	BY	APPV	
-	SEE SHEET 1	-	-	-	-



DETAIL F  
 RECOMMENDED PT CONNECTOR LAYOUT  
 2X INDIVIDUALLY  
 SCALE 12:1

RECOMMENDED PCB CONFIGURATION  
 WITH KEEP-OUT AREAS

THIS DRAWING IS A CONTROLLED DOCUMENT.		OWN: M.E. COWHER 14JUN2007	TE Connectivity NAME: SFP+ 1X2 CAGE ASSEMBLY PRESS FIT, EMI GASKET WITH LIGHT PIPES
DIMENSIONS:		CHK: M.J. PHILLIPS 14JUN2007	
TOLERANCES UNLESS OTHERWISE SPECIFIED:		APV: M.J. PHILLIPS 14JUN2007	
mm		PRODUCT SPEC	
0 PLC ±0.1		108-2364	SIZE: CAGE CODE DRAWING NO. RESTRICTED TO
1 PLC ±0.1		APPLICATION SPEC	A100779C=2007180
2 PLC ±0.1		114-13120	SCALE: 1:1 SHEET 3 OF 3 REV D
3 PLC ±0.1		WEIGHT	Customer Drawing
4 PLC ±0.1			
5 PLC ±0.1			
6 PLC ±0.1			
ANGLES ±1°			
FINISH			