

Minimum wall thickness 1,5mm,
alternativ panel cut-out d=16,1

Technical specification:

Rated voltage:	4pos	5pos
IEC 61076-2-101	250 V	60 V
Current rating:	4/5pos	
IEC 61076-2-101	4 A at 40°C	
Insulation resistance:	>=100 MΩ	
IEC 60512		
Pollution degree:	3/2	
IEC 60664-1		
Degree of protection:	IP 67, in mated condition	
IEC 60529		
Temperature range:	-30°C ... +85°C	
Mating cycles:	>=100	
IEC 60512-9a		

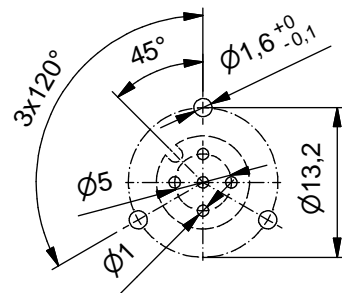
Materials:

Contact:	CuZn
Contact plating:	Nickel, gold plated
Contact carrier:	PBT GF, UL 94
Sealing connector:	FPM
chassis:	NBR
Counternut:	CuZn, nickel plated
Socket housing:	CuZn, nickel plated
Grouting:	Polyurethane-resin, UL 94

Installation specification:

Recommended torque:	1-1,2 Nm
Conec installation tool:	Torque wrench: 36-000200 Insert across flats 19: 36-000250

Pin layout PCB



Part no:	Description:	Pos	Length L:
43-01663	SAL - 12S - FKH4 - P6,75	4	6,75mm
43-01664	SAL - 12S - FKH5 - P6,75	5	

title:	Female socket M12x1 with dip solder shielded, backmounting
dwg no:	43K1A1177
part no:	see table

DO NOT ALTER CAD DRAWING BY HAND Directive 2002/95/EC RoHS compliant	Index: a 07.12.12 MG Ä4555 Data sheet revised, technical specification changed, materials corrected	dim. in mm	
		date	name
		drawn 29.09.10	Franz
		appd. 29.09.10	Schmidt
general tolerance:	0 ± 0,50mm 0,0 ± 0,25mm 0,00 ± 0,10mm	CONEC ®	
THIS DRAWING MAY NOT BE COPIED OR REPRODUCED IN ANY WAY, AND MAY NOT BE PASSED ON TO A THIRD PARTY WITHOUT WRITTEN PERMISSION. OWNERSHIP AND COPYRIGHT OF CONEC GmbH			