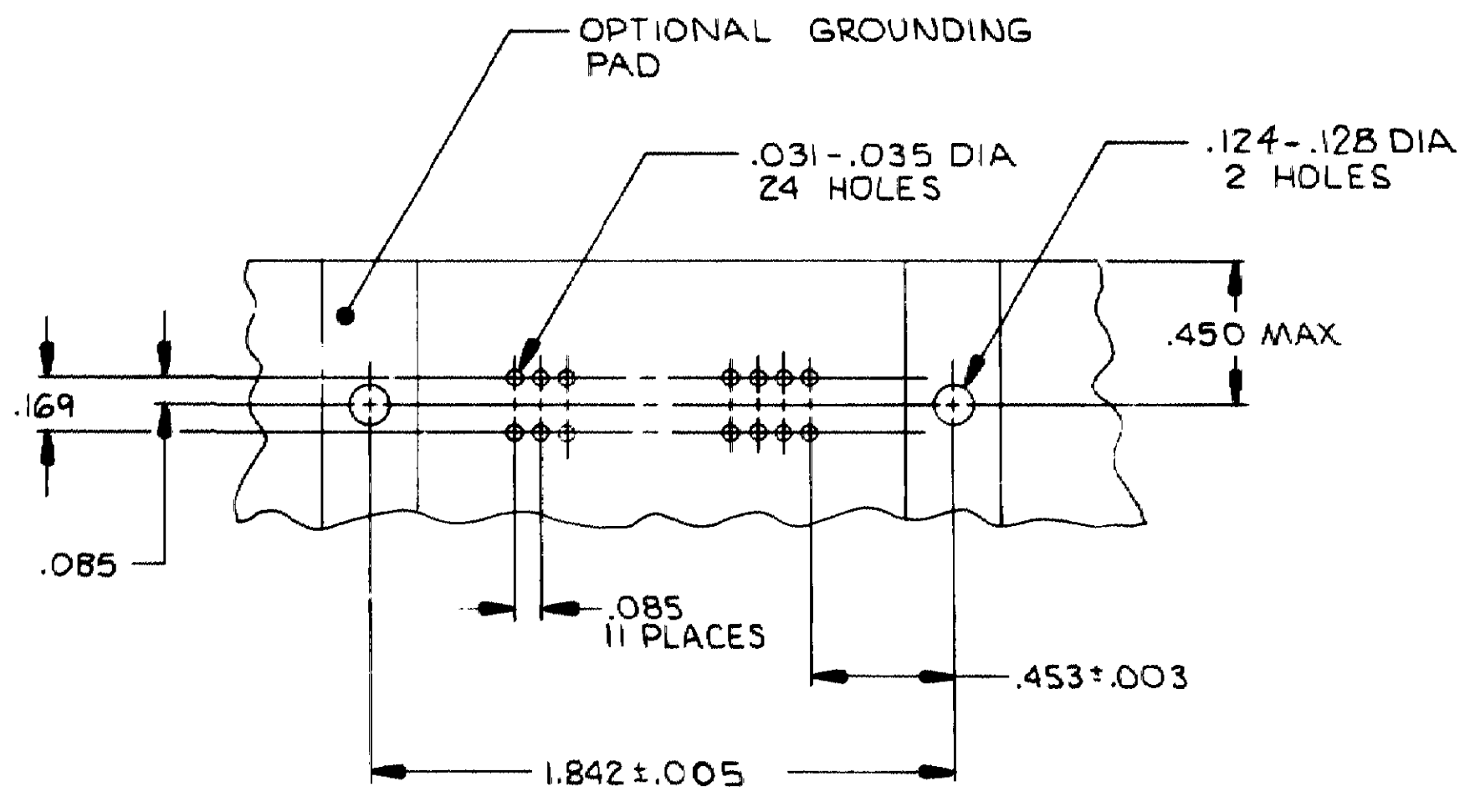
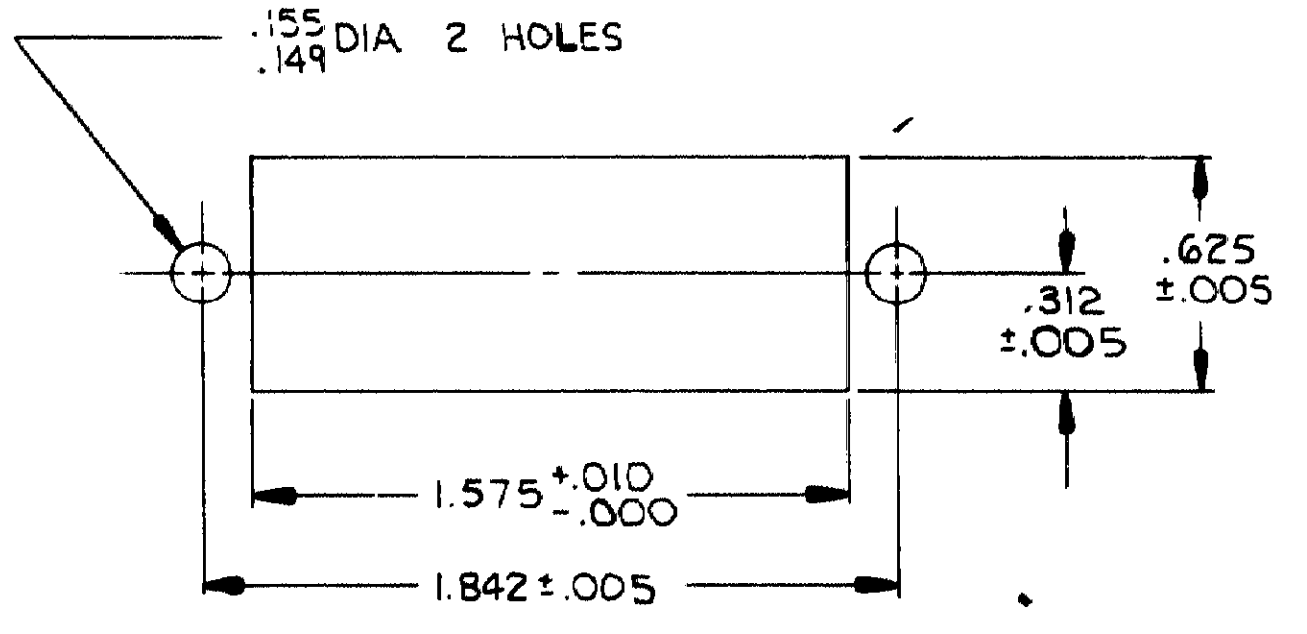


THIS DRAWING IS UNPUBLISHED. RELEASED FOR PUBLICATION
 © COPYRIGHT 19 BY AMP INCORPORATED, HARRISBURG, PA. ALL INTERNATIONAL RIGHTS RESERVED. AMP PRODUCTS MAY BE COVERED BY U.S. AND FOREIGN PATENTS AND/OR PATENTS PENDING.

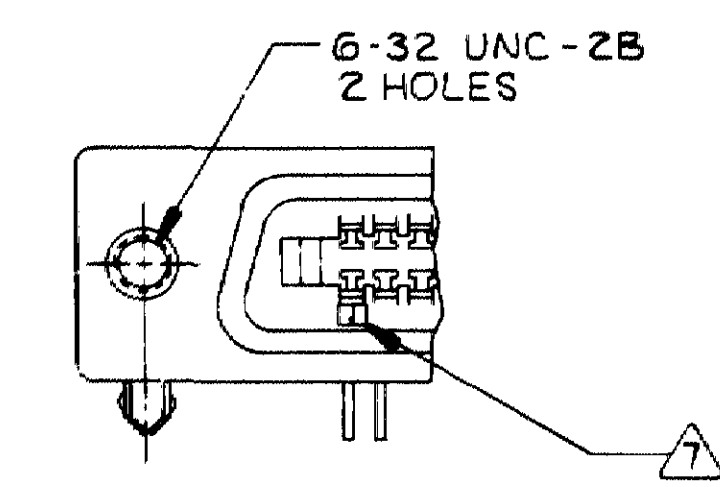
REVISIONS					
P	F	ZONE/LTR	DESCRIPTION	DATE	APPROVED
1		C	REV PER ECN AA-4110	8-11-87	ST



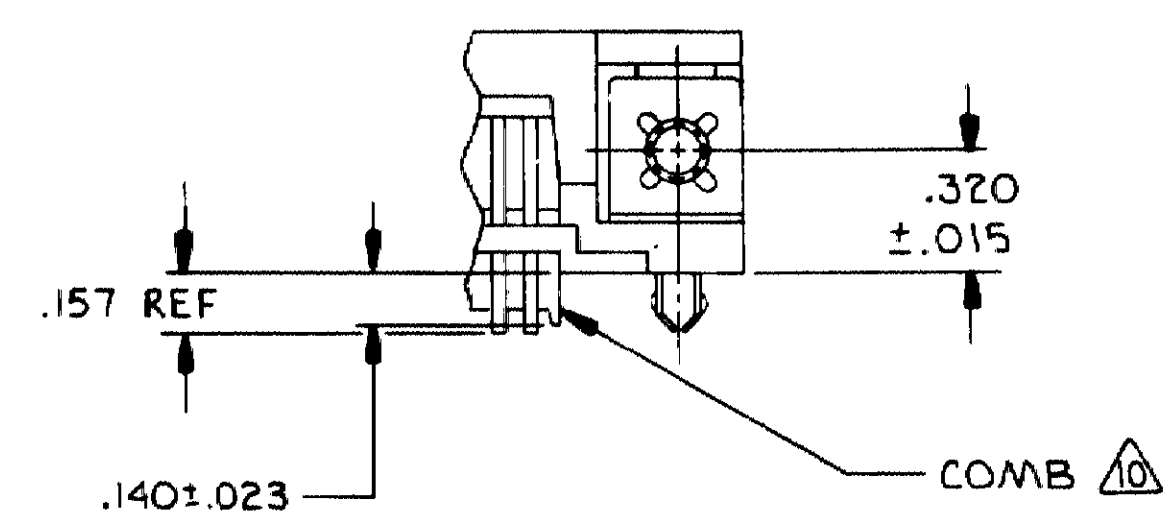
SUGGESTED PRINTED CIRCUIT BOARD MOUNTING DIMENSIONS



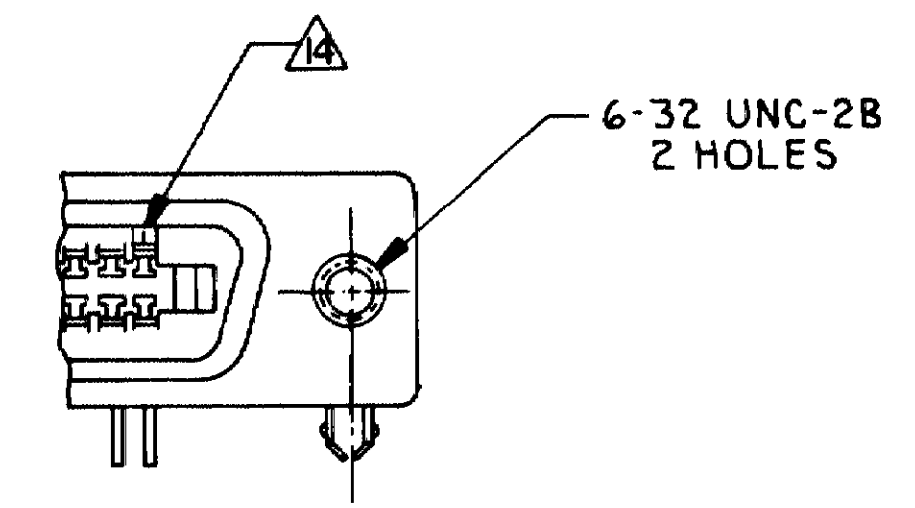
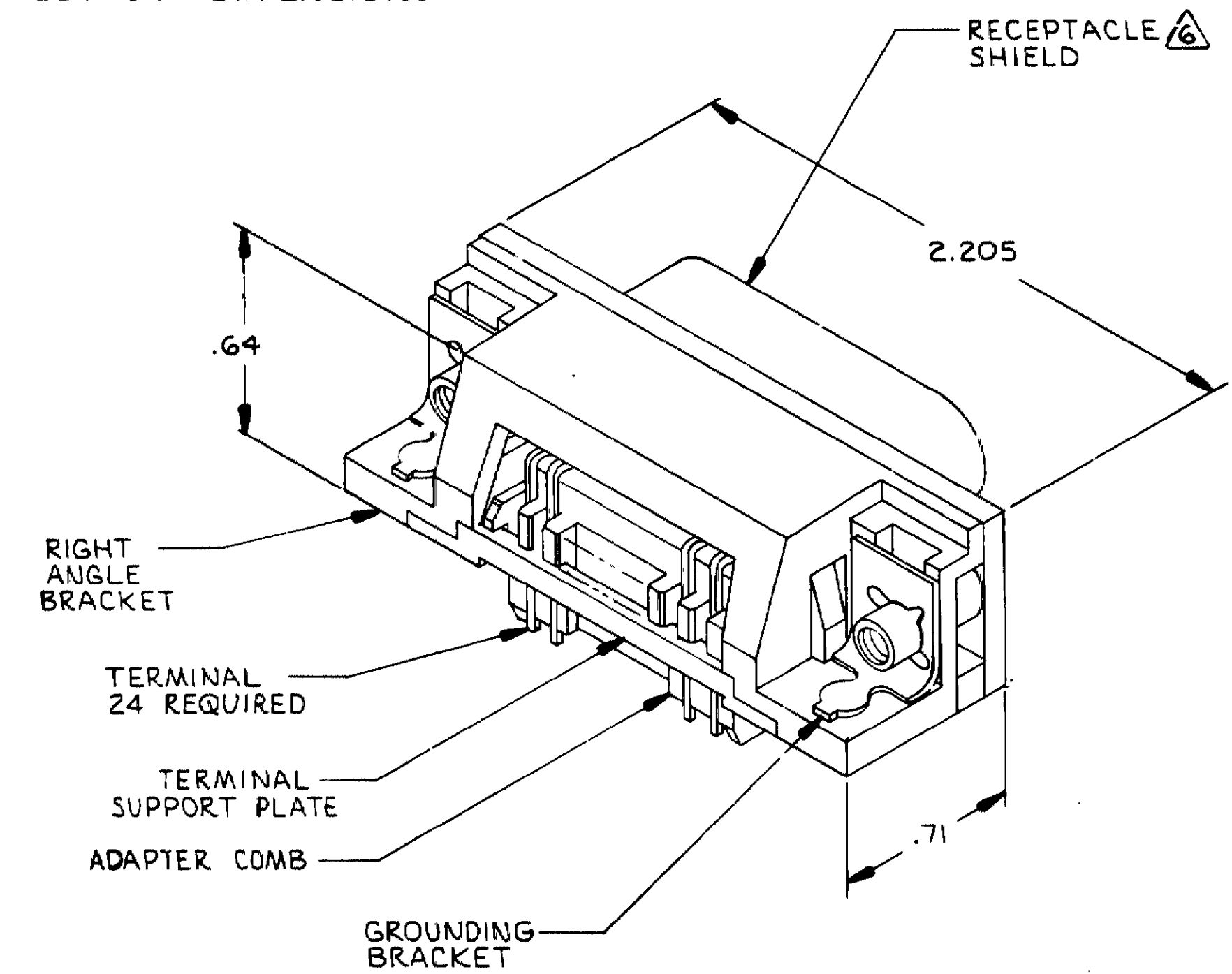
SUGGESTED REAR PANEL MOUNTING CUTOUT DIMENSIONS



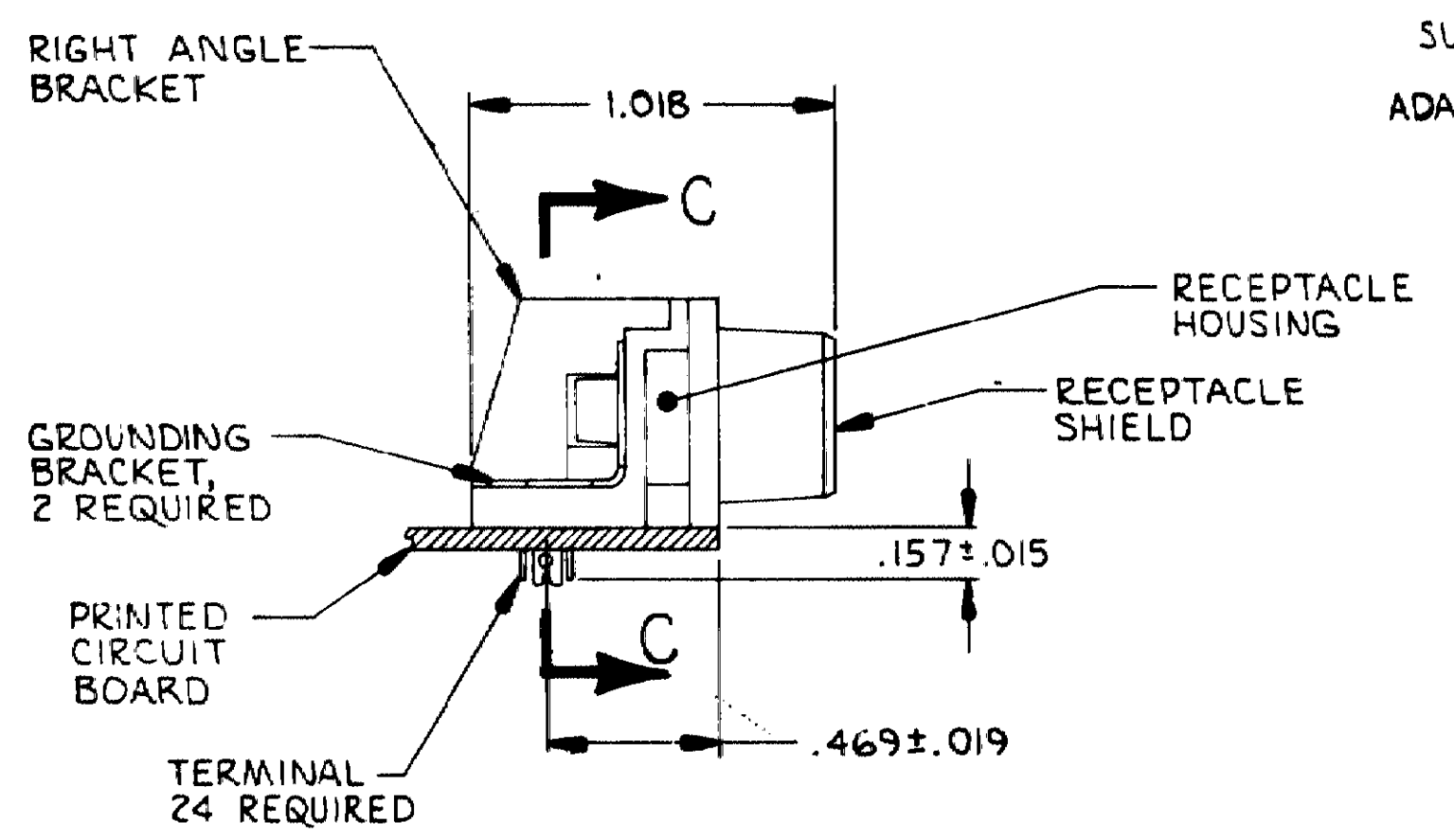
DETAIL A REVERSE ORIENTATION



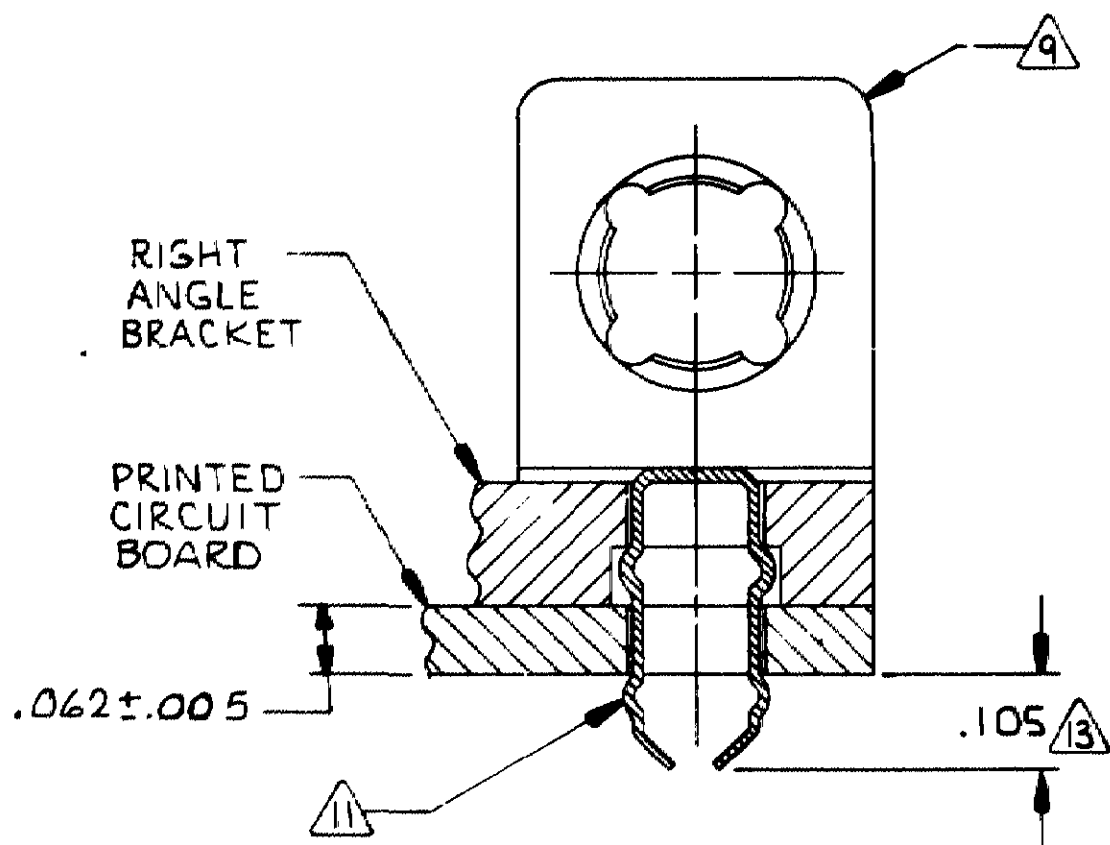
DETAIL B



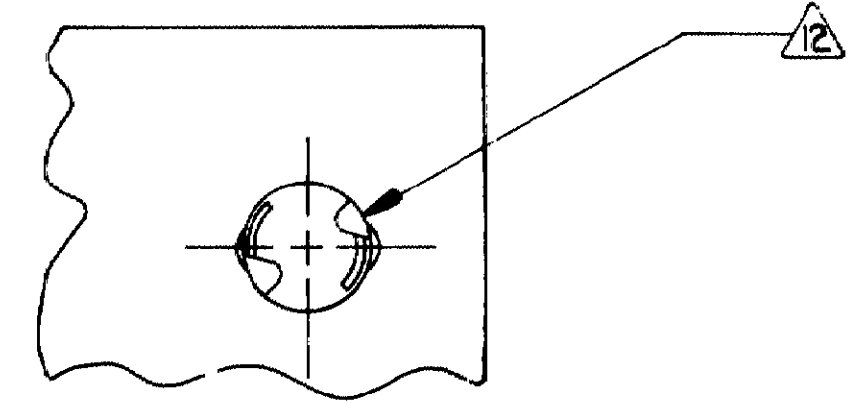
DETAIL D STANDARD ORIENTATION



REAR PANEL MOUNTING DETAIL SHOWN FOR REFERENCE ONLY



SECTION C-C SCALE: NONE



- ⚠ MATERIAL: HOUSING, BRACKET, ADAPTER COMB AND TERMINAL SUPPORT PLATE - POLYESTER, BLACK. RECEPTACLE SHIELD - BRIGHT NICKEL OVER COPPER PLATED DIE CASTING. TERMINALS - TAILS-TIN LEAD OVER NICKEL PLATED HIGH STRENGTH COPPER ALLOY. MATING SURFACE - LOCALIZED GOLD OVER NICKEL PLATED HIGH STRENGTH COPPER ALLOY. GROUND BRACKET - TIN-LEAD PLATED CARBON STEEL
- 2. THE CONTACT SURFACES OF THE TERMINALS ARE COATED WITH LUBRICANT.
- 3. CENTER-TO-CENTER SPACING OF TERMINALS IS .085 NOMINAL.
- 4. ALL DIMENSIONS SHOWN ARE MAXIMUM UNLESS OTHERWISE SPECIFIED.
- ⚠ DETAILS A & D IS VIEWED FROM MATING SIDE OF RECEPTACLE ASSEMBLY.
- ⚠ SHIELD IS ASSEMBLED TO RECEPTACLE ASSEMBLY BEFORE SHIPMENT.
- ⚠ TERMINAL 1 LOCATED IN THIS ROW FOR REVERSE ORIENTATION, SEE DETAIL A.
- 8. PANEL THICKNESS RANGE: .062 MAXIMUM.
- ⚠ GROUNDING BRACKET RETAINS CONNECTOR IN .062 THICK PC BOARD WITHOUT ADDITIONAL HARDWARE.
- ⚠ IF TERMINALS DO NOT EXTEND BELOW COMB, THEN COMB SHALL BE PARTIALLY RETRACTED BEFORE INSERTING CONNECTOR INTO PC BOARD.
- ⚠ GROUNDING BRACKET LOCATES CONNECTOR FLUSH WITH TOP OF PC BOARD AND SPRING LOCKS BENEATH.
- ⚠ CYLINDRICAL SHAPE OFFERS 180° OF SOLDERING SURFACE.
- ⚠ SURFACE AREA OF GROUNDING BRACKET BELOW PC BOARD SHALL PASS SOLDERABILITY REQUIREMENTS IN ACCORDANCE WITH AMP SPECIFICATION 109-11-2. DISCOLORATION, SCRATCHES, SPOTS AND OTHER COSMETIC DEFICIENCIES TYPICAL OF BARREL PLATING PROCESSES ARE ACCEPTABLE PROVIDING PARTS PASS 24 HOUR EXPOSURE AT 95% RH AT 40°C WITHOUT EVIDENCE OF CORROSION.
- ⚠ TERMINAL 1 LOCATED IN THIS ROW FOR STANDARD ORIENTATION, SEE DETAIL D.

D	STANDARD	-2
A	REVERSE ORIENTATION	554923-1
SEE DETAIL		PART NO

UNLESS OTHERWISE SPECIFIED DIMENSIONS ARE IN INCHES TOLERANCES ON: DECIMALS : — ANGLES : —	CONTRACT NO	AMP INCORPORATED Harrisburg, Pa. 17105	
	DR Victor E. Staal 2/19/86	NAME	
MATERIAL	CHK R.C. Clark 2-21-86	RECEPTACLE ASSEMBLY, SHIELDED, 24 POSITION, RIGHT ANGLE, SCREW LOCK, FLUSH PANEL MOUNTING WITH BOARD LOCK GROUND, CHAMP®	
FINISH	APPD [Signature]	SIZE D	FSCM NO 00779
	DSGN APPD [Signature]	DRAWING NO	554923
	OTHER APPD	SCALE 2:1	SHEET 1 OF 1