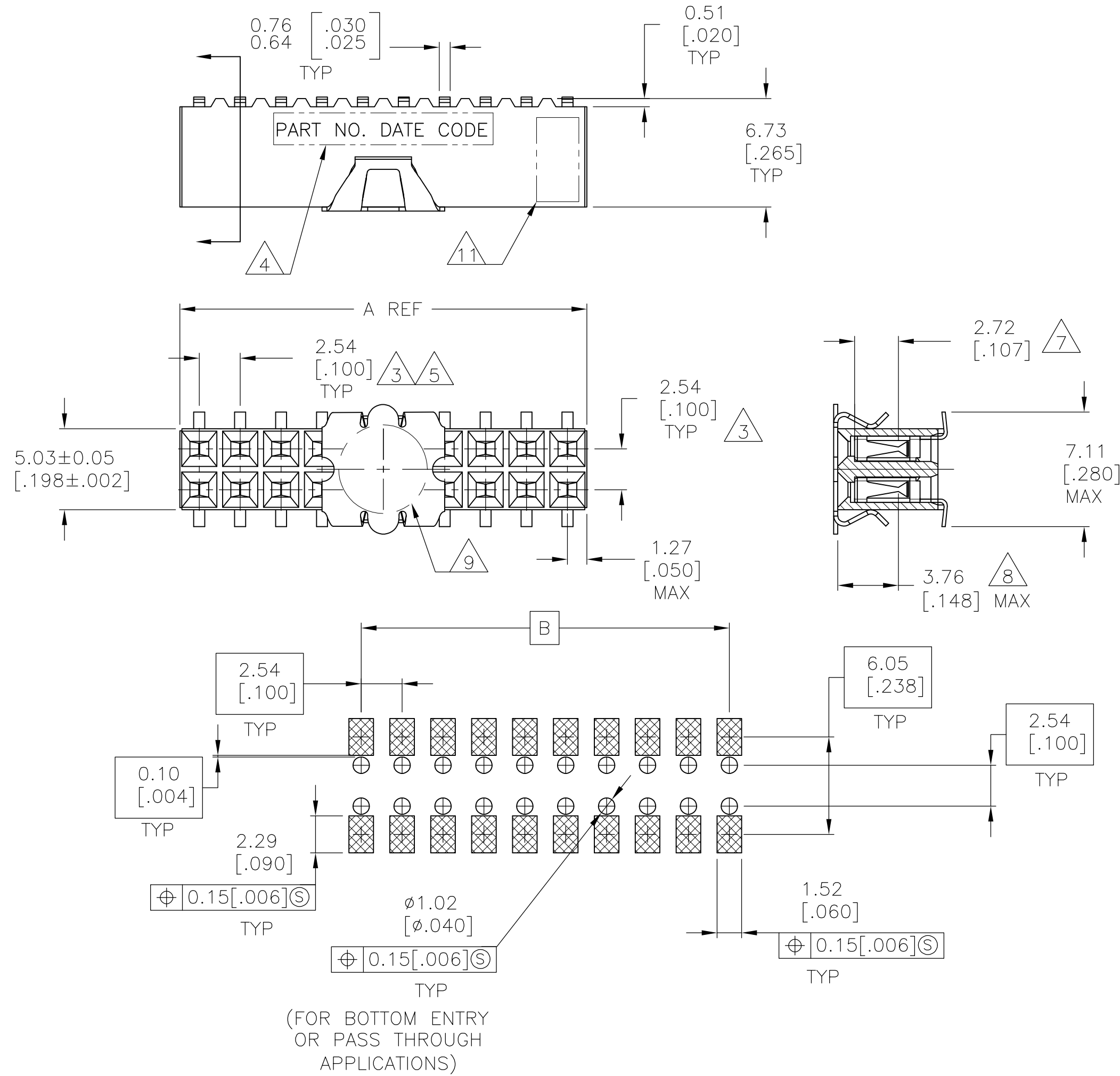


THIS DRAWING IS UNPUBLISHED. RELEASED FOR PUBLICATION
 © COPYRIGHT - By - ALL RIGHTS RESERVED.

| LOC | | DIST | | REVISIONS | | | | |
|-----|-----|-------------|--|---------------------------|---------|-----|------|--|
| P | LTR | DESCRIPTION | | | DATE | DWN | APVD | |
| AD | 00 | J8 | | REVISED PER ECO-13-005565 | 01APR13 | KH | JO | |

FOR PART NUMBERS 5-147104-1 THRU 9-147104-0
 SEE SHEET 2



RECOMMENDED PC BOARD LAYOUT
 0.20[.008] THICK STENCIL

| FINISH | EIA TAPE WIDTH | B | A | NO. OF POSN. | PART NUMBER |
|--------|----------------|---------------|----------------|--------------|-------------|
| 2 | 120mm | 99.06 [3.900] | 101.60 [4.000] | 80 | 4-147104-0 |
| | | 96.52 [3.800] | 99.06 [3.900] | 78 | 3-147104-9 |
| | | 93.98 [3.700] | 96.52 [3.800] | 76 | 3-147104-8 |
| | | 91.44 [3.600] | 93.98 [3.700] | 74 | 3-147104-7 |
| | | 88.90 [3.500] | 91.44 [3.600] | 72 | 3-147104-6 |
| | | 86.36 [3.400] | 88.90 [3.500] | 70 | 3-147104-5 |
| | | 83.82 [3.300] | 86.36 [3.400] | 68 | 3-147104-4 |
| | | 81.28 [3.200] | 83.82 [3.300] | 66 | 3-147104-3 |
| | | 78.74 [3.100] | 81.28 [3.200] | 64 | 3-147104-2 |
| | | 76.20 [3.000] | 78.74 [3.100] | 62 | 3-147104-1 |
| | | 73.66 [2.900] | 76.20 [3.000] | 60 | 3-147104-0 |
| | | 71.12 [2.800] | 73.66 [2.900] | 58 | 2-147104-9 |
| | 88mm | 68.58 [2.700] | 71.12 [2.800] | 56 | 2-147104-8 |
| | | 66.04 [2.600] | 68.58 [2.700] | 54 | 2-147104-7 |
| | | 63.50 [2.500] | 66.04 [2.600] | 52 | 2-147104-6 |
| | | 60.96 [2.400] | 63.50 [2.500] | 50 | 2-147104-5 |
| | | 58.42 [2.300] | 60.96 [2.400] | 48 | 2-147104-4 |
| | | 55.88 [2.200] | 58.42 [2.300] | 46 | 2-147104-3 |
| | | 53.34 [2.100] | 55.88 [2.200] | 44 | 2-147104-2 |
| | | 50.80 [2.000] | 53.34 [2.100] | 42 | 2-147104-1 |
| | | 48.26 [1.900] | 50.80 [2.000] | 40 | 2-147104-0 |
| | | 45.72 [1.800] | 48.26 [1.900] | 38 | 1-147104-9 |
| | | 43.18 [1.700] | 45.72 [1.800] | 36 | 1-147104-8 |
| | | 40.64 [1.600] | 43.18 [1.700] | 34 | 1-147104-7 |
| 72mm | 38.10 [1.500] | 40.64 [1.600] | 32 | 1-147104-6 | |
| | 35.56 [1.400] | 38.10 [1.500] | 30 | 1-147104-5 | |
| | 33.02 [1.300] | 35.56 [1.400] | 28 | 1-147104-4 | |
| | 30.48 [1.200] | 33.02 [1.300] | 26 | 1-147104-3 | |
| | 27.94 [1.100] | 30.48 [1.200] | 24 | 1-147104-2 | |
| | 25.40 [1.000] | 27.94 [1.100] | 22 | 1-147104-1 | |
| | 22.86 [.900] | 25.40 [1.000] | 20 | 1-147104-0 | |
| | 20.32 [.800] | 22.86 [.900] | 18 | 147104-9 | |
| | 17.78 [.700] | 20.32 [.800] | 16 | 147104-8 | |
| | 15.24 [.600] | 17.78 [.700] | 14 | 147104-7 | |
| | 12.70 [.500] | 15.24 [.600] | 12 | 147104-6 | |
| | 10.16 [.400] | 12.70 [.500] | 10 | 147104-5 | |
| 44mm | 7.62 [.300] | 10.16 [.400] | 8 | 147104-4 | |
| | 5.08 [.200] | 7.62 [.300] | 6 | 147104-3 | |
| | 2.54 [.100] | 5.08 [.200] | 4 | 147104-2 | |
| | 2.54 [.100] | 5.08 [.200] | 4 | 147104-2 | |
| | 2.54 [.100] | 5.08 [.200] | 4 | 147104-2 | |
| | 2.54 [.100] | 5.08 [.200] | 4 | 147104-2 | |
| 24mm | 2.54 [.100] | 2 | 147104-1 | 12/6 | |

OBSOLETE

THIS DRAWING IS A CONTROLLED DOCUMENT.

DWN M.BINNER 06NOV02
 CHK J.OLSON 06NOV02
 APVD J.OLSON 06NOV02
 PRODUCT SPEC

NAME: RECEPTACLE ASSEMBLY, MOD IV, DOUBLE ROW, DUAL ENTRY, .100X.100CL, SURFACE MOUNT, AMPMODU

SIZE: A2 CAGE CODE: 00779 DRAWING NO: 147104 RESTRICTED TO: -

WEIGHT: 114-25018 SCALE: 4:1 SHEET: 1 OF 2 REV: J8

CUSTOMER DRAWING


THIS DRAWING IS UNPUBLISHED. RELEASED FOR PUBLICATION
 © COPYRIGHT - By - ALL RIGHTS RESERVED.

| LOC | DIST | REVISIONS | | | | | |
|-----|------|-----------|-----|-------------|------|-----|------|
| AD | 00 | P | LTR | DESCRIPTION | DATE | DWN | APVD |
| | | - | | SEE SHEET 1 | - | - | - |

- 1 HOUSING: FLAME RETARDANT, GLASS FILLED, POLYESTER, COLOR: BLACK.
CONTACT: PHOSPHOR BRONZE
VACUUM COVER: STAINLESS STEEL
- 2 CONTACT: DUPLEX PLATED 0.25µm[.000010] GOLD IN CONTACT AREA, 3.81-7.62µm[.000150-.000300] BRIGHT TIN-LEAD ON, LEADS, ALL OVER 1.27µm[.000050] MINIMUM NICKEL
- 3 THESE DIMENSIONS PERTAIN TO CAVITY CENTERLINES ONLY NOT TO CONTACT LOCATIONS
- 4 MARK PART NUMBER AND DATE CODE IN APPROXIMATE LOCATION SHOWN, EITHER SIDE.
- 5 TOLERANCE IS NON-CUMULATIVE.
- 6 2 POSITION DATE CODE IS MARKED OPPOSITE SIDE OF TE CONNECTIVITY LOGO.
- 7 POINT OF MEASUREMENT DIMENSION FOR PLATING THICKNESS (INSIDE CONTACT BEAM).
- 8 POINT-OF-CONTACT DIMENSION.
- 9 ø5.51[.217] MIN TARGET AREA FOR VACUUM PICK UP. COVER TO BE REMOVED AFTER SOLDERING.
- 10. PACKAGED IN TAPE & REEL PER EIA 481 SPECIFICATION..
- 11 TE TRADEMARK AND CSA LOGO ARE MOLDED INTO HOUSING.
- 12 NO PART NUMBER REQUIRED ON THIS PART.
- 13 CONTACT: DUPLEX PLATED 0.25µm[.000010] GOLD IN CONTACT AREA, 3.81-7.62µm[.000150-.000300] MATTE TIN ON LEADS, ALL OVER 1.27µm[.000050] MINIMUM NICKEL.
- 14 ROHS 2002/95/EC COMPLIANT.
- 15 SUPERSEDED BY 6-147104-4
- 16 SUPERSEDED BY 5-147104-2
- 17 SUPERSEDED BY 5-147104-8

| FINISH | EIA TAPE WIDTH | B | A | NO.OF POSN. | PART NUMBER |
|--------|----------------|--------------|---------------|-------------|-------------|
| 13 | 120mm | 99.06[3.900] | 101.60[4.000] | 80 | 9-147104-0 |
| | | 96.52[3.800] | 99.06[3.900] | 78 | 8-147104-9 |
| | | 93.98[3.700] | 96.52[3.800] | 76 | 8-147104-8 |
| | | 91.44[3.600] | 93.98[3.700] | 74 | 8-147104-7 |
| | | 88.90[3.500] | 91.44[3.600] | 72 | 8-147104-6 |
| | | 86.36[3.400] | 88.90[3.500] | 70 | 8-147104-5 |
| | | 83.82[3.300] | 86.36[3.400] | 68 | 8-147104-4 |
| | | 81.28[3.200] | 83.82[3.300] | 66 | 8-147104-3 |
| | | 78.74[3.100] | 81.28[3.200] | 64 | 8-147104-2 |
| | | 76.20[3.000] | 78.74[3.100] | 62 | 8-147104-1 |
| | | 73.66[2.900] | 76.20[3.000] | 60 | 8-147104-0 |
| | | 71.12[2.800] | 73.66[2.900] | 58 | 7-147104-9 |
| 14 | 88mm | 68.58[2.700] | 71.12[2.800] | 56 | 7-147104-8 |
| | | 66.04[2.600] | 68.58[2.700] | 54 | 7-147104-7 |
| | | 63.50[2.500] | 66.04[2.600] | 52 | 7-147104-6 |
| | | 60.96[2.400] | 63.50[2.500] | 50 | 7-147104-5 |
| | | 58.42[2.300] | 60.96[2.400] | 48 | 7-147104-4 |
| | | 55.88[2.200] | 58.42[2.300] | 46 | 7-147104-3 |
| | | 53.34[2.100] | 55.88[2.200] | 44 | 7-147104-2 |
| | | 50.80[2.000] | 53.34[2.100] | 42 | 7-147104-1 |
| | | 48.26[1.900] | 50.80[2.000] | 40 | 7-147104-0 |
| | | 45.72[1.800] | 48.26[1.900] | 38 | 6-147104-9 |
| | | 43.18[1.700] | 45.72[1.800] | 36 | 6-147104-8 |
| | | 40.64[1.600] | 43.18[1.700] | 34 | 6-147104-7 |
| 12 | 72mm | 38.10[1.500] | 40.64[1.600] | 32 | 6-147104-6 |
| | | 35.56[1.400] | 38.10[1.500] | 30 | 6-147104-5 |
| | | 33.02[1.300] | 35.56[1.400] | 28 | 6-147104-4 |
| | | 30.48[1.200] | 33.02[1.300] | 26 | 6-147104-3 |
| | | 27.94[1.100] | 30.48[1.200] | 24 | 6-147104-2 |
| | | 25.40[1.000] | 27.94[1.100] | 22 | 6-147104-1 |
| | | 22.86[.900] | 25.40[1.000] | 20 | 6-147104-0 |
| | | 20.32[.800] | 22.86[.900] | 18 | 5-147104-9 |
| | | 17.78[.700] | 20.32[.800] | 16 | 5-147104-8 |
| | | 15.24[.600] | 17.78[.700] | 14 | 5-147104-7 |
| | | 12.70[.500] | 15.24[.600] | 12 | 5-147104-6 |
| | | 10.16[.400] | 12.70[.500] | 10 | 5-147104-5 |
| 12 | 44mm | 7.62[.300] | 10.16[.400] | 8 | 5-147104-4 |
| | | 5.08[.200] | 7.62[.300] | 6 | 5-147104-3 |
| | | 2.54[.100] | 5.08[.200] | 4 | 5-147104-2 |
| | | 2.54[.100] | 5.08[.200] | 2 | 5-147104-1 |
| 12 | 24mm | - | 2.54[.100] | 2 | 5-147104-1 |

12 6 OBSOLETE

| | | | | | | | | | | | | | | | | |
|---|--------------|----------------------------|--|------------------------|-----|-------|--------------|-------|-----|-------|-----|--------|-----|-------------------|-------------------|-----------------------|
| THIS DRAWING IS A CONTROLLED DOCUMENT. | | DWN M.BINNER 06NOV02 |  TE Connectivity | | | | | | | | | | | | | |
| DIMENSIONS: mm [INCHES] | | CHK J.OLSON 06NOV02 | | | | | | | | | | | | | | |
| TOLERANCES UNLESS OTHERWISE SPECIFIED: | | APVD J.OLSON 06NOV02 | NAME RECEPTACLE ASSEMBLY, MOD IV, DOUBLE ROW, DUAL ENTRY, .100X.100CL, SURFACE MOUNT, AMPMODU | | | | | | | | | | | | | |
| <table border="1"> <tr> <td>0 PLC</td> <td>± -</td> </tr> <tr> <td>1 PLC</td> <td>± -</td> </tr> <tr> <td>2 PLC</td> <td>± .005[0.13]</td> </tr> <tr> <td>3 PLC</td> <td>± -</td> </tr> <tr> <td>4 PLC</td> <td>± -</td> </tr> <tr> <td>ANGLES</td> <td>± -</td> </tr> </table> | | 0 PLC | ± - | 1 PLC | ± - | 2 PLC | ± .005[0.13] | 3 PLC | ± - | 4 PLC | ± - | ANGLES | ± - | PRODUCT SPEC - | SIZE 108-25022 | CAGE CODE A2 00779 |
| 0 PLC | ± - | | | | | | | | | | | | | | | |
| 1 PLC | ± - | | | | | | | | | | | | | | | |
| 2 PLC | ± .005[0.13] | | | | | | | | | | | | | | | |
| 3 PLC | ± - | | | | | | | | | | | | | | | |
| 4 PLC | ± - | | | | | | | | | | | | | | | |
| ANGLES | ± - | | | | | | | | | | | | | | | |
| MATERIAL 1 | | FINISH SEE TABLE | WEIGHT 114-25018 | DRAWING NO C=147104 | | | | | | | | | | | | |
| | | CUSTOMER DRAWING | | RESTRICTED TO - | | | | | | | | | | | | |
| | | SCALE 1:1 | | SHEET 2 of 2 | | | | | | | | | | | | |
| | | | | REV J8 | | | | | | | | | | | | |