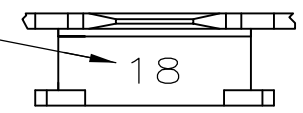


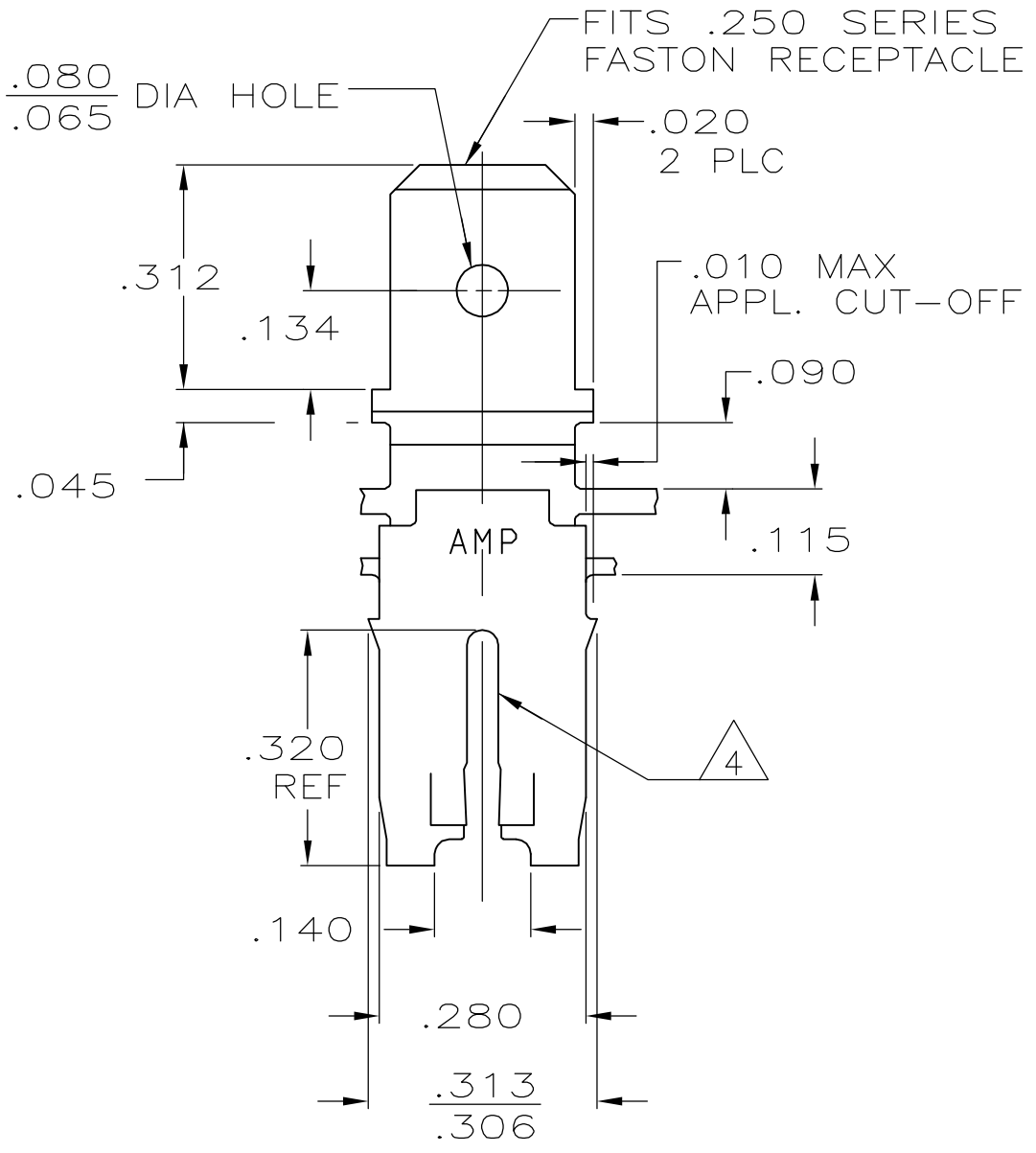
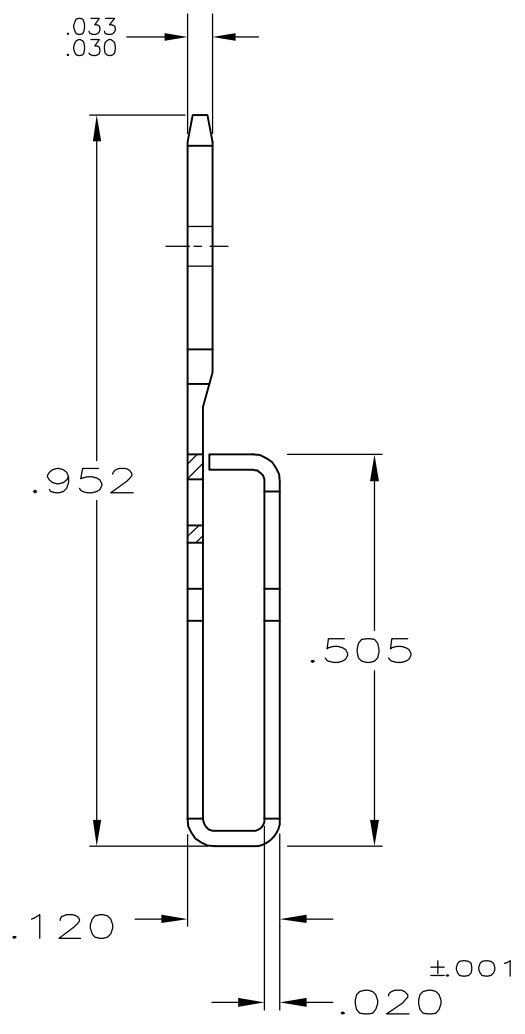
THIS DRAWING IS UNPUBLISHED. RELEASED FOR PUBLICATION  
 © COPYRIGHT BY TYCO ELECTRONICS CORPORATION. ALL RIGHTS RESERVED.

LOC	DIST	REVISIONS			
P	LTR	DESCRIPTION	DATE	DWN	APVD
AF	50	C	REVISED PER ECR-06-010427	04SEP06	HMR KR

IDENTIFICATION NUMBER FOR MAGNET WIRE RANGE



- 1 FOR MAG-MATE CAVITY SPECIFICATION
- 2 CONTINUOUS STRIP ON REELS WITH TERMINALS LOCATED ON .330 CENTERS.
- 3 AFTER INSERTION INTO PLASTIC HOLDER MAG-MATE MUST BE POTTED-IN TO PREVENT PULL-OUT WHEN MATING RECEPTACLE IS DISCONNECTED.
- 4 TWO WIRES OF THE SAME SIZE MAX PER SLOT. #22-#20 AWG COPPER MAGNET WIRE RANGE.



63495-1  
PART NO

THIS DRAWING IS A CONTROLLED DOCUMENT.		DWN M.S. FEHER 5/19/88	Tyco Electronics Corporation Harrisburg, PA 17105-3608		
DIMENSIONS: INCHES		CHK P. FORTNEY 5/31/88			
TOLERANCES UNLESS OTHERWISE SPECIFIED:		APVD J SWARTZ 5/31/88	NAME TAB, .250 FASTON,™ MAG-MATE™		
		PRODUCT SPEC	SIZE		
0 PLC ± - 1 PLC ± - 2 PLC ± - 3 PLC ± .010 4 PLC ± - ANGLES ± -		APPLICATION SPEC	CAGE CODE	DRAWING NO	RESTRICTED TO
MATERIAL #4M HARD PRE-MILLED BRASS		FINISH VARNISH RESIST, SYNTHETIC OIL OVER .000080 MIN TIN	WEIGHT 114-2066	A300779	C-63495
CUSTOMER DRAWING			SCALE 4:1	SHEET 1 OF 1	REV C