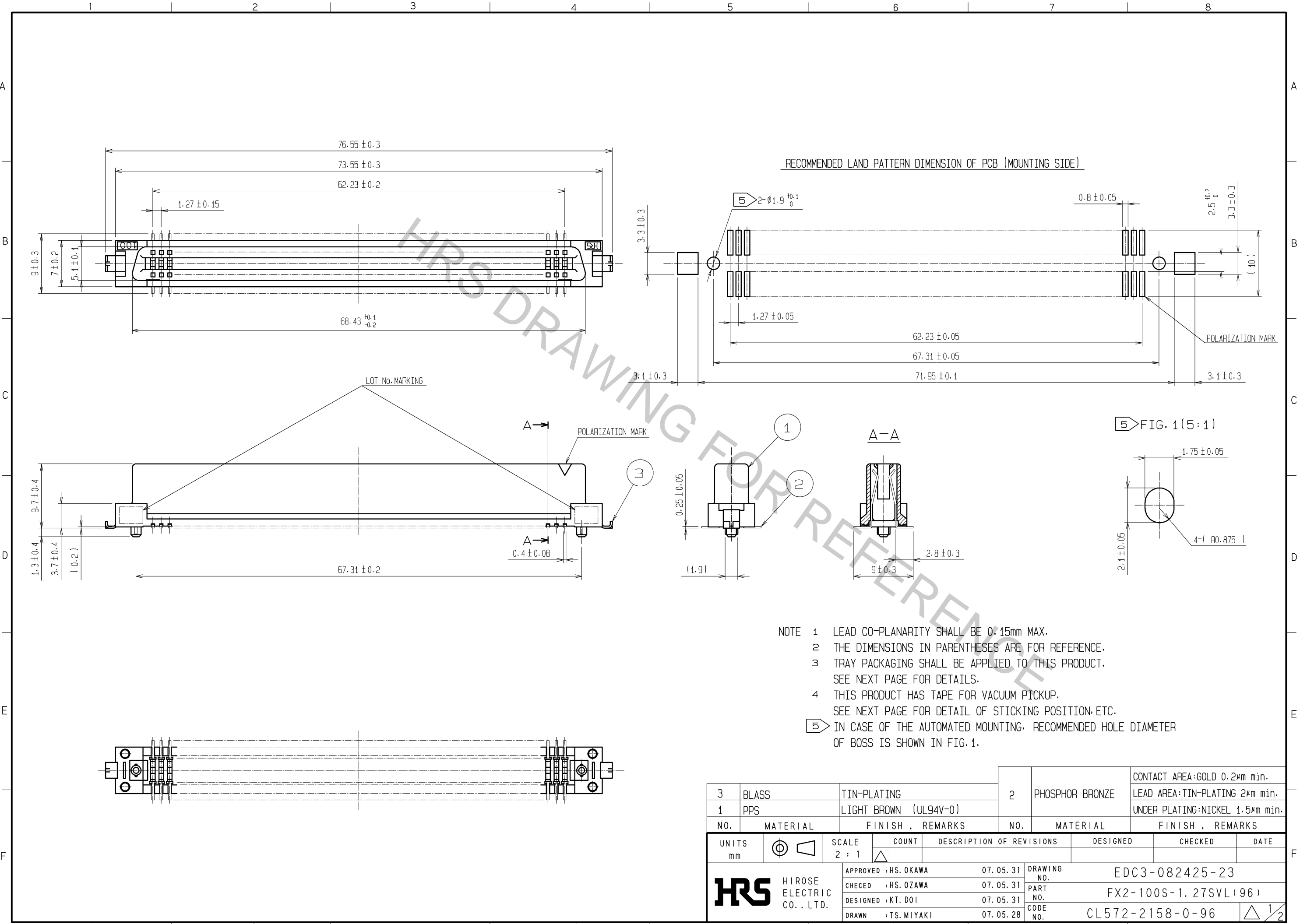


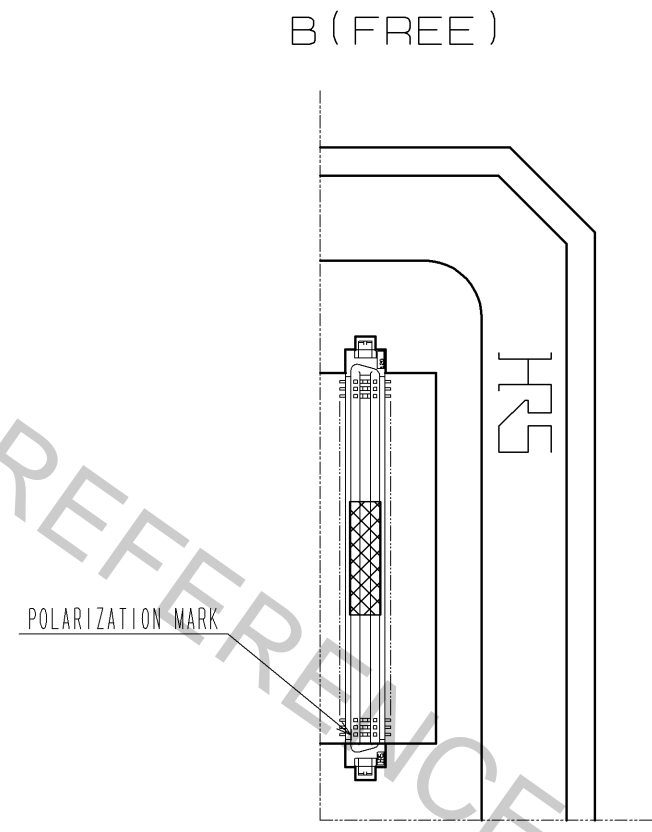
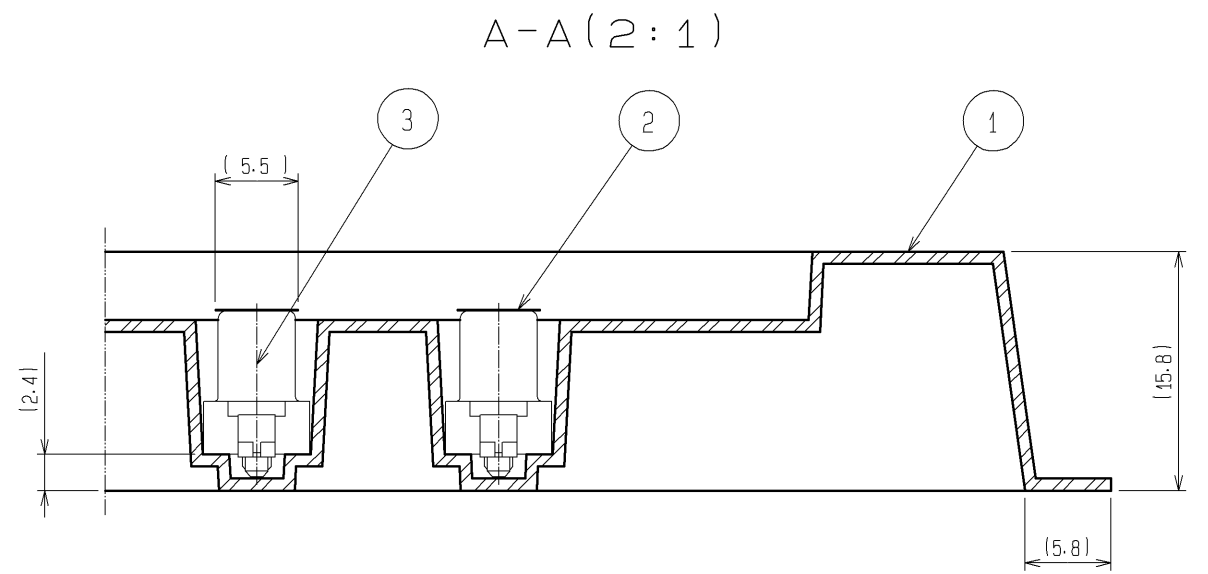
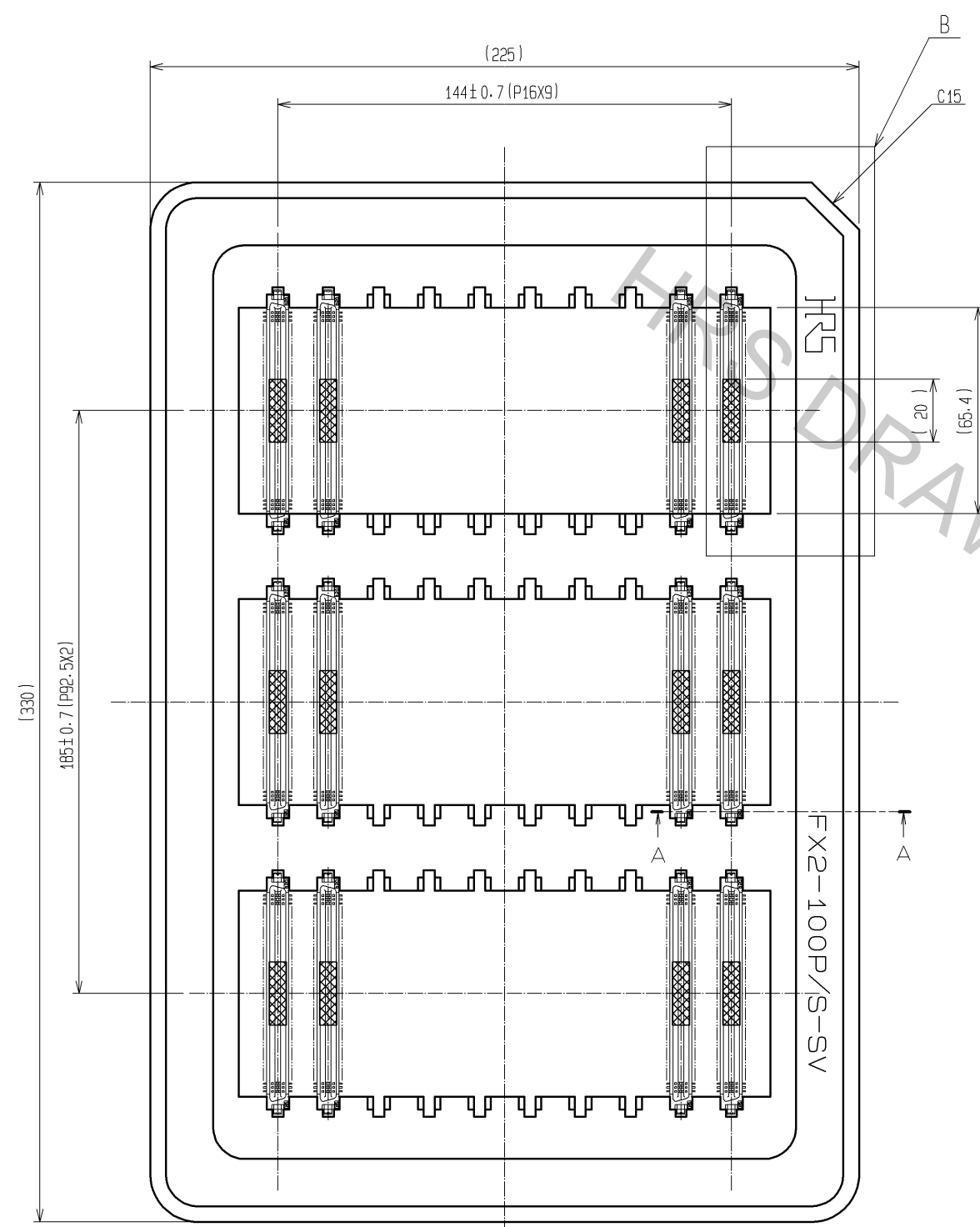
Apr.1.2017 Copyright 2017 HIROSE ELECTRIC CO., LTD. All Rights Reserved.



- NOTE
- LEAD CO-PLANARITY SHALL BE 0.15mm MAX.
 - THE DIMENSIONS IN PARENTHESES ARE FOR REFERENCE.
 - TRAY PACKAGING SHALL BE APPLIED TO THIS PRODUCT. SEE NEXT PAGE FOR DETAILS.
 - THIS PRODUCT HAS TAPE FOR VACUUM PICKUP. SEE NEXT PAGE FOR DETAIL OF STICKING POSITION, ETC.
- ⑤ IN CASE OF THE AUTOMATED MOUNTING, RECOMMENDED HOLE DIAMETER OF BOSS IS SHOWN IN FIG. 1.

3	BLASS	TIN-PLATING	2	PHOSPHOR BRONZE	CONTACT AREA:GOLD 0.2μm min.			
1	PPS	LIGHT BROWN (UL94V-0)			LEAD AREA:TIN-PLATING 2μm min.			
					UNDER PLATING:NICKEL 1.5μm min.			
NO.	MATERIAL	FINISH	REMARKS	NO.	MATERIAL	FINISH	REMARKS	
UNITS	mm	SCALE	2 : 1	COUNT	DESCRIPTION OF REVISIONS	DESIGNED	CHECKED	DATE
HRS HIROSE ELECTRIC CO., LTD.		APPROVED	HS. OKAWA	07.05.31	DRAWING NO.	EDC3-082425-23		
		CHECED	HS. OZAWA	07.05.31	PART NO.	FX2-100S-1.27SVL(96)		
		DESIGNED	KT. DOI	07.05.31	CODE NO.	CL572-2158-0-96		
		DRAWN	TS. MIYAKI	07.05.28				

DRAWING FOR PACKING



- NOTE
- 1 1 TRAY:30 CONNECTORS
 - 2 SETTING POSITION OF CONNECTORS IN THE TRAY SHALL BE ARRANGED IN ACCORDANCE WITH DRAWING.
 - 3 REMOVE THE VACUUM PICK-UP TAPE AFTER MOUNTING THE CONNECTOR.
 - 4 THE DIMENSIONS IN PARENTHESES ARE FOR REFERENCE.

2	POLYIMIDE	(TAPE FOR VACUUM PICK-UP)	3		(CONNECTOR)			
1	PS	TRAY						
NO.	MATERIAL	FINISH . REMARKS	NO.	MATERIAL	FINISH . REMARKS			
UNITS	mm	SCALE	1 : 2	COUNT	DESCRIPTION OF REVISIONS	DESIGNED	CHECKED	DATE
		APPROVED : HS. OKAWA	07.05.31	DRAWING NO. EDC3-082425-23				
		CHECED : HS. OZAWA	07.05.31	PART NO. FX2-100S-1.27SVL(96)				
		DESIGNED : KT. DOI	07.05.31	CODE NO. CL572-2158-0-96				
		DRAWN : TS. MIYAKI	07.05.28					