

THIS DRAWING IS UNPUBLISHED. RELEASED FOR PUBLICATION 20
 © COPYRIGHT 20 BY - ALL RIGHTS RESERVED.

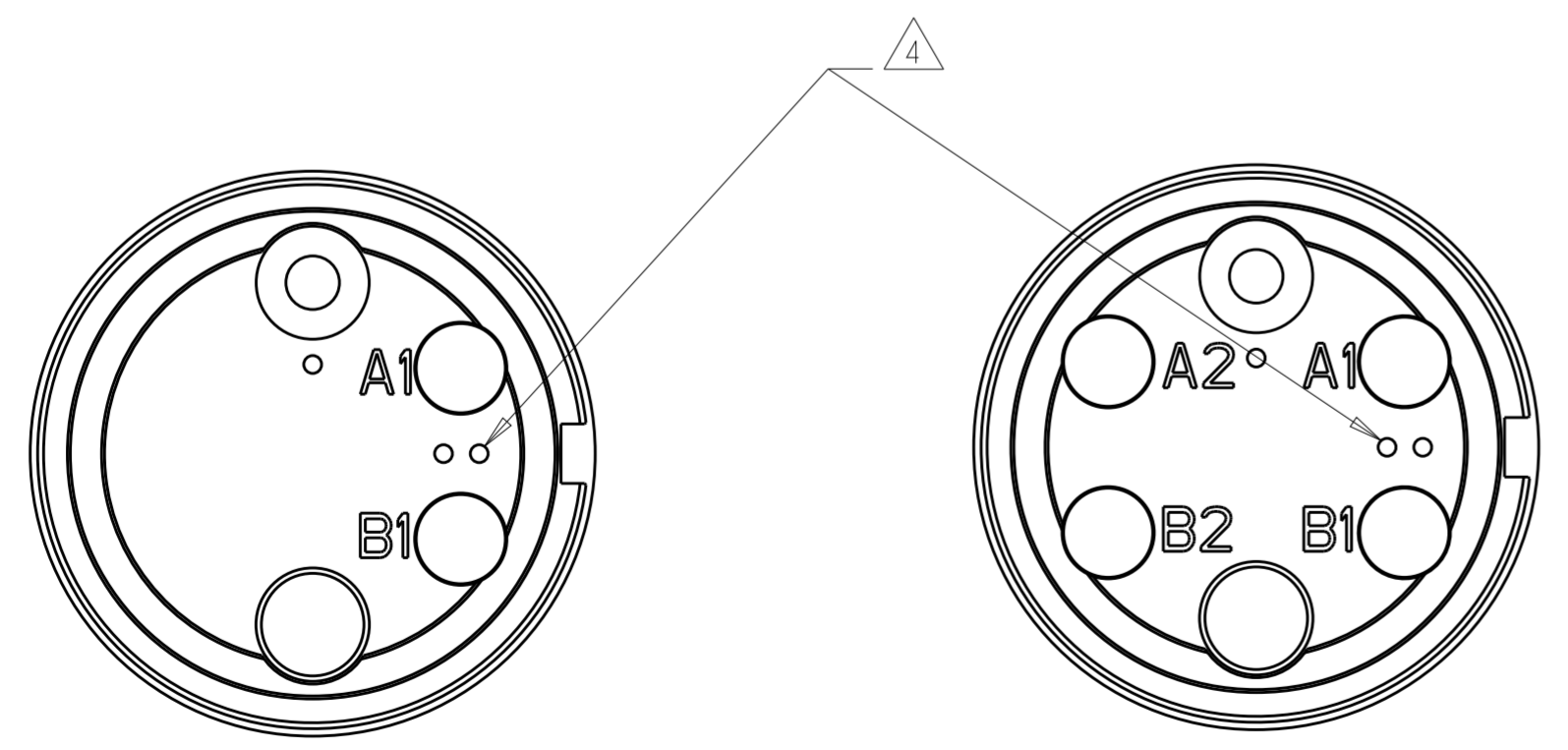
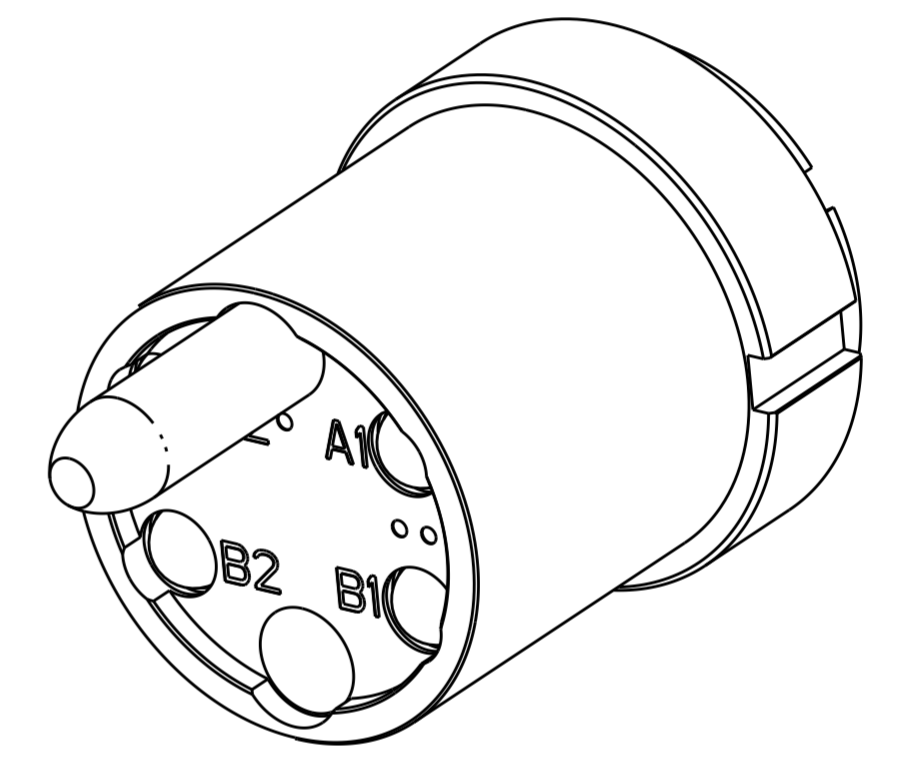
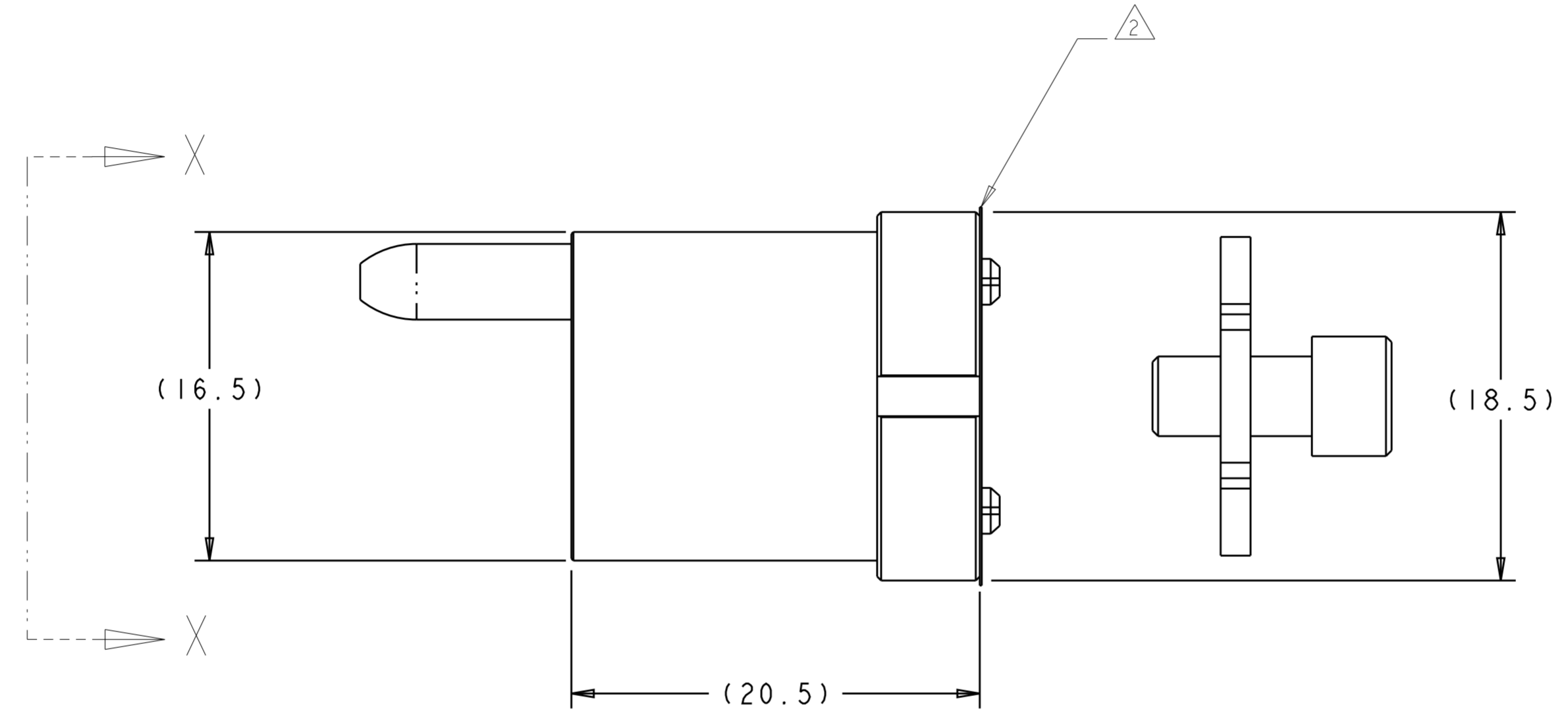
REVISIONS					
P	LTR	DESCRIPTION	DATE	DWN	APVD
	D1	ECR-12-003450	22FEB2012	KG	DW
	E	ECR-16-000809	15FEB2016	KG	DW
	E1	ECR-16-010381	03NOV2016	KG	DW
	F	ECR-17-014250	17OCT2017	KG	DW

1. USE WITH FERRULE ASSEMBLY KIT P/N 1515941-2 OR P/N 1588801-1.
 QUANTITY OF 2 REQUIRED FOR 1693001-1. QUANTITY 4 REQUIRED FOR 1693001-2..

2. PROTECTIVE LABEL APPLIED AFTER FINAL CLEAN ROOM TEST TO PREVENT OPTICAL CAVITY CONTAMINATION. REMOVE ONLY WHEN READY TO ASSEMBLE.

3. THIS PRODUCT HAS NOT COMPLETED VALIDATION TESTING.

4. MULTIMODE IDENTIFIER.



1693001-1

1693001-2

VIEW X-X

4 CHANNEL, 850/1300nm MM	1693001-2
2 CHANNEL, 850/1300nm MM	1693001-1
DESCRIPTION	PART NUMBER

THIS DRAWING IS A CONTROLLED DOCUMENT.		DWN 19APR2004 K. GLATFELTER	STE TE Connectivity	
DIMENSIONS: mm		CHK 04JUN2004 D. WERTMAN		
TOLERANCES UNLESS OTHERWISE SPECIFIED:		APVD 18JUN2004 D. WERTMAN	NAME INSERT ASSEMBLY, PRO BEAM SR.,	
0 PLC ±	1 PLC ±	PRODUCT SPEC	-	
2 PLC ±	3 PLC ±	APPLICATION SPEC	-	
4 PLC ±	ANGLES ±	WEIGHT	SIZE A2	CAGE CODE 00779
FINISH	N/A	CUSTOMER DRAWING	DRAWING NO. C-1693001	RESTRICTED TO
			SCALE 4:1	SHEET OF REV F