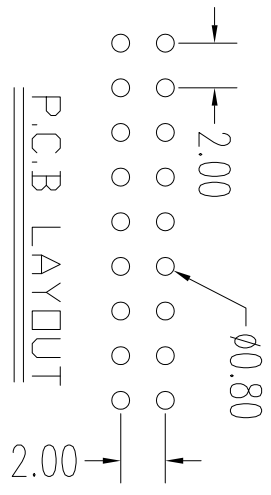
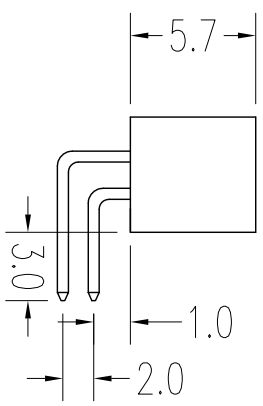
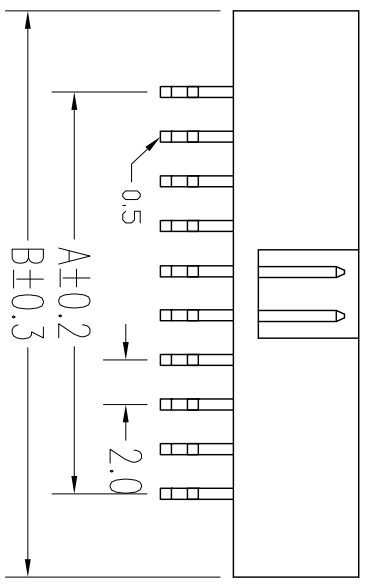
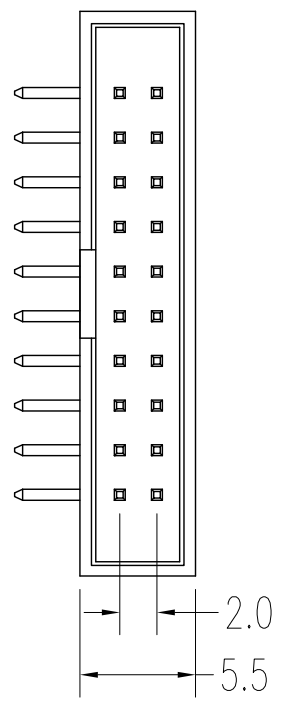


REV.	DESCRIPTION	DATE
A	RELEASE	2012.11.12

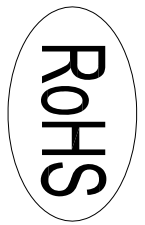
NOTES:

Insulator Material: Nylon-6T, UL 94V-0
 Contact Plating:TIN, 80-100μ"
 Contact Material: Brass

Current Rating : 1A AC,DC
 Contact Resistance: 20MΩ Max.
 Dielectric Withstanding: AC 500V
 Insulator Resistance: 1000MΩ Min.
 Operating Temp.: -40°C~+105°C



NUMBER OF POSITIONS	DIMENSION	
	A	B
06	4.00	11.20
08	6.00	13.20
10	8.00	15.20
12	10.00	17.20
14	12.00	19.20
16	14.00	21.20
18	16.00	23.30
20	18.00	25.20
24	22.00	29.20
26	24.00	31.20
30	28.00	35.20
34	32.00	39.20
40	38.00	45.20
44	42.00	49.20
50	48.00	55.20
60	58.00	65.20
64	62.00	69.20



UNLESS TOLERANCE		DRAW	BY
GENERAL	ANGLE	DESIGN	BY
X ± 0.30	X° ± 3.0°	CHECK	BY
.X ± 0.20	.XX° ± 2.0°	APPROVE	BY
.XX ± 0.15	.XX° ± 1.0°	SCALE	SHEET
.XXX ± 0.08	.XXX ± 0.5°	1:1	1/1

Cnc Tech,LLC

Port NO.: 3120-XX-0200-99

SCALE: 1:1 SHEET: 1/1 UNIT: MM

DRAW NO.: REV: A

