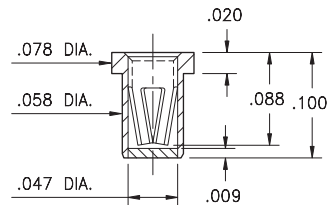


PIN RECEPTACLES

PIN RECEPTACLES WITH ORGANIC FIBRE PLUG® SOLDER BARRIER (SEE SPECIFIC CONTACT RANGE ON PAGES 254 - 262)

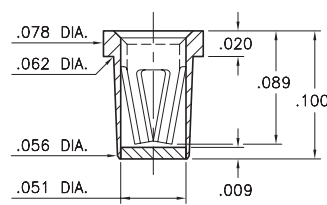
0337

0337-0-XX-XX-15-XX-10-0
Solder mount in $\varnothing .066" \pm .003"$ PTH
#15 Contact for $\varnothing .020" - .032"$ pins
Also available on 8mm wide carrier tape:
6,000 parts per 13" reel



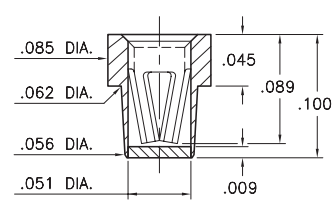
4280

4280-0-XX-XX-16-XX-10-0
Solder mount in $\varnothing .067" \pm .003"$ PTH
#16 Contact for $\varnothing .022" - .034"$ pins
Also available on 8mm wide carrier tape:
6,000 parts per 13" reel



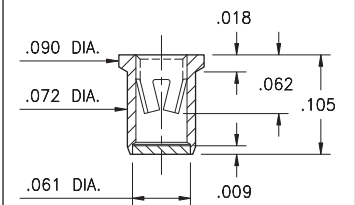
5280

5280-0-XX-XX-16-XX-40-0
Solder mount in $\varnothing .067" \pm .003"$ PTH
#16 Contact for $\varnothing .022" - .034"$ pins
Also available on 16mm wide carrier tape:
2,200 parts per 13" reel



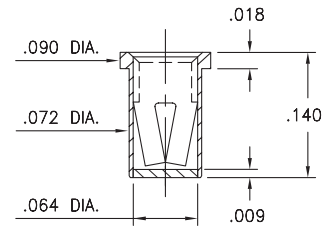
0332

0332-0-XX-XX-18-XX-10-0
Solder mount in $\varnothing .079" \pm .003"$ PTH
#18 Contact for $\varnothing .037" - .043"$ pins
Also available on 16mm wide carrier tape:
2,200 parts per 13" reel



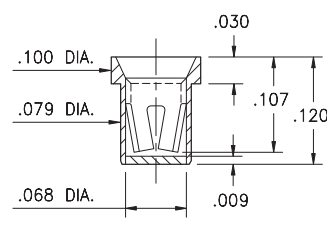
0479

0479-0-XX-XX-34-XX-10-0
Solder mount in $\varnothing .077" \pm .003"$ PTH
#34 Contact for $\varnothing .032" - .046"$ pins
Also available on 16mm wide carrier tape:
2,200 parts per 13" reel



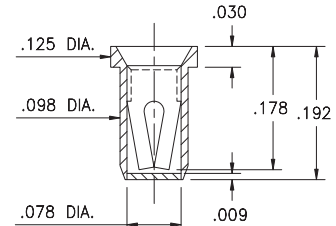
0375

0375-0-XX-XX-02-XX-10-0
Solder mount in $\varnothing .087" \pm .003"$ PTH
#02 Contact for $\varnothing .040" - .050"$ pins
Also available on 12mm wide carrier tape:
4,500 parts per 13" reel



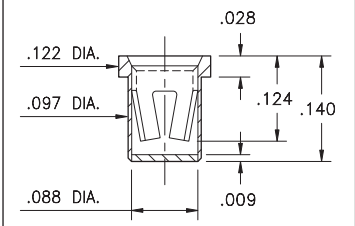
0353

0353-0-XX-XX-03-XX-10-0
Solder mount in $\varnothing .106" \pm .003"$ PTH
#03 Contact for $\varnothing .040" - .060"$ pins
Also available on 12mm wide carrier tape:
1,300 parts per 13" reel



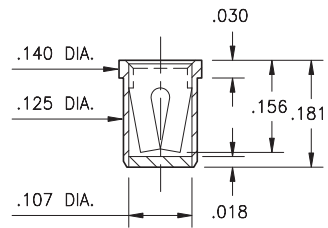
0384

0384-0-XX-XX-23-XX-10-0
Solder mount in $\varnothing .105" \pm .003"$ PTH
#23 Contact for $\varnothing .045" - .065"$ pins
Also available on 12mm wide carrier tape:
2,000 parts per 13" reel



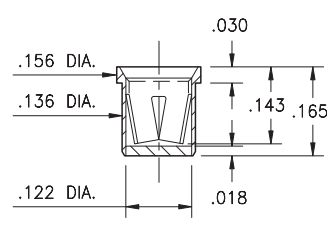
0376

0376-0-XX-XX-07-XX-10-0
Solder mount in $\varnothing .133" \pm .003"$ PTH
#07 Contact for $\varnothing .065" - .082"$ pins
Also available on 16mm wide carrier tape:
1,500 parts per 13" reel



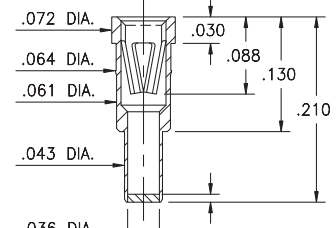
0321

0321-0-XX-XX-08-XX-10-0
Solder mount in $\varnothing .144" \pm .003"$ PTH
#08 Contact for $\varnothing .084" - .102"$ pins
Also available on 16mm wide carrier tape:
1,700 parts per 13" reel



3435

3435-0-XX-XX-47-XX-04-0
Solder mount in $\varnothing .046" \pm .003"$ PTH
#47 Contact for $\varnothing .025" - .036"$ and $\varnothing .025"$ square pins. Also available on 24mm wide carrier tape:
1,400 parts per 13" reel



SPECIFICATIONS:

Shell Material: Brass Alloy 360, 1/2 Hard
Contact Material: Beryllium Copper Alloy 172, HT
Solder Barrier: Organic Fibre Plug®
Dimensions: Inches
Tolerances On: Lengths: $\pm .005$
Diameters: $\pm .002$
Angles: $\pm 2^\circ$



ORDER CODE: XXXX - 0 - XX - XX - XX - XX - XX - 0

BASIC PART

SPECIFY PACKAGING:

- 43 Discrete Receptacles
- 67 Supplied on 13" Reels

SPECIFY SHELL FINISH:

- 01 200 μ " TIN/LEAD OVER NICKEL
- 80 200 μ " TIN OVER NICKEL (RoHS)

SPECIFY CONTACT FINISH:

- 27 30 μ " GOLD OVER NICKEL (RoHS)
- 02 100 μ " TIN/LEAD OVER NICKEL
- 80 200 μ " TIN OVER NICKEL (RoHS)

CONTACT:

#02, #07, #08, #15, #16, #18, #23, #34 or #47 CONTACT (DATA ON PAGES 254 - 262)

