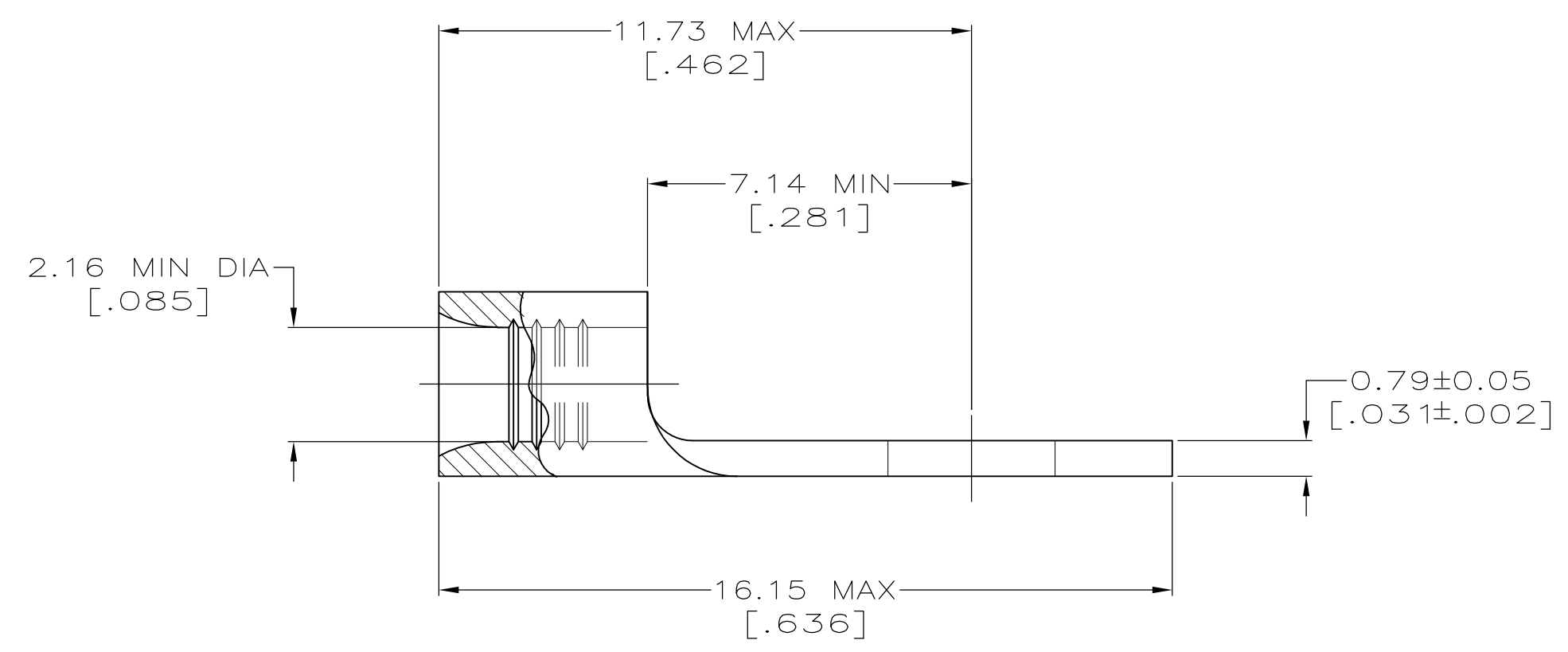


| | |
|--------------------------------|--------------------------------|
| AMP WIRE RANGE | E13288 Listed |
| 16-14 AWG SOLID OR STRANDED | 16-14 AWG SOLID OR STRANDED |
| LR7189 Certified | MILITARY P/N AND CLASS |
| 16-14 AWG SOLID OR STRANDED | NOT APPLICABLE |

- ① STAMP AMP 16-14* APPROX AS SHOWN
- ② 0.00254 [.000100] MIN TIN PER ASTM B-545.
- ③ CLEANED, UNPLATED



| | | | |
|--------|----------|------------------|-----------|
| ③ | - | LOOSE PIECE | 34122-1 |
| ② | 100 | LOOSE PIECE, BOX | 8-34122-1 |
| | 5000 | ON TAPE | 2-34122-1 |
| | --- | LOOSE PIECE | 34122 |
| FINISH | QUANTITY | PACKAGING TYPE | PART NO |

| | | |
|--|--|---|
| AMP INCORPORATED CUSTOMER SERVICE SYSTEMS | | MAX RECOMMENDED OPERATING TEMPERATURE: 170° C MAX |
| FOR ADDITIONAL PRODUCT INFORMATION OR COPIES OF DRAWINGS AND TECHNICAL DOCUMENTS | PRODUCT INFORMATION CENTER 1-800-522-6752 | VOLTAGE RATING: NOT APPLICABLE |
| FOR APPLICATION TOOLING INFORMATION | TOOLING ASSISTANCE CENTER 1-800-722-1111 | WIRE CROSS SECTIONAL AREA RANGE: 1.04-2.62mm ² [2,050-5,180] CIR MILS SOLID OR STRANDED |
| FOR ORDER ENTRY | 1-800-526-5142 | THIS DRAWING IS A CONTROLLED DOCUMENT FOR AMP INCORPORATED. IT IS SUBJECT TO CHANGE AND THE CONTROLLING ENGINEERING ORGANIZATION SHOULD BE CONTACTED FOR THE LATEST REVISION. |

| | | | | |
|---|-------------|--------------------------------|------------------------------|-----------------|
| THIS DRAWING IS A CONTROLLED DOCUMENT. | | DWN TA BRINKMAN 3-17-93 | TE Connectivity | |
| DIMENSIONS: mm[INCHES] | | CHK DA PATTERSON 3-17-93 | NAME DE MILLER 3-17-93 | |
| TOLERANCES UNLESS OTHERWISE SPECIFIED: | | APVD DE MILLER 3-17-93 | PRODUCT SPEC | |
| 0 PLC ± - | | APPLICATION SPEC | | |
| 1 PLC ± - | | SIZE | | |
| 2 PLC ± - | | CAGE CODE | | |
| 3 PLC ± - | | DRAWING NO | | |
| 4 PLC ± - | | RESTRICTED TO | | |
| ANGLES ± ± - | | A2 00779 G-34122 | | |
| MATERIAL COPPER PER ASTM B-152 ANNEALED | FINISH - | WEIGHT - | SCALE 8:1 | SHEET 1 OF 1 |
| CUSTOMER DRAWING | | REV G1 | | |