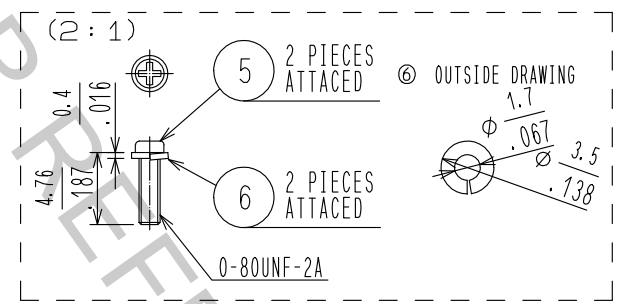
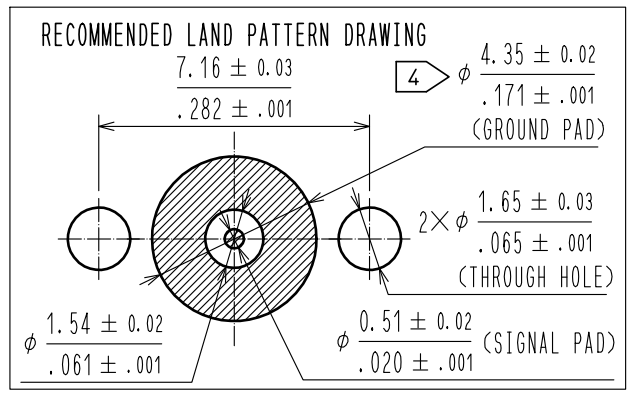
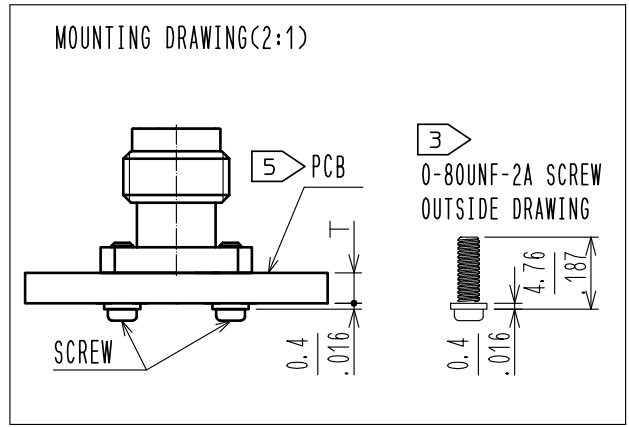


- 1 ▶ WHEN MATING THE CONNECTOR , PLEASE HOLD MILLING AREA OF 5.8±0.2 WITH A SPANNER NOT TO PLACE STRESS ON PCB BY THE TORQUE.
- 2 ▶ 0-80UNF-2B SCREW TIGHTENING TORQUE IS 0.09N · m.
- 3 ▶ PLEASE USE ATTACHED SCREW AND WASHER FOR PCB MOUNTING. ATTACHED SCREW AND WASHER APPLY PCB THICKNESS T=0.8 TO 2.65mm.
- 4 ▶ RESIST OF INSIDE OF $\phi 4.35 \pm 0.02$ (GROUND PAD) IS PROHIBITED.
- ▲ 5 ▶ RECOMMENDED PCB THICKNESS t1 IS GREATER THAN 1.6mm.
- ▲ 6. THIS CONNECTOR SHOULD BE USE FOR TEST PORT ONLY.



RoHS COMPLIANT

3	STAINLESS STEEL	GOLD PLATING	6	STAINLESS STEEL	SPRING WASHER		
2	PTFE		5	STEEL	0-80UNF-2A SCREW		
1	STAINLESS STEEL	PASSIVATE	4	BERYLLIUM COPPER	GOLD PLATING		
NO.	MATERIAL	FINISH	REMARKS	NO.	MATERIAL	FINISH	REMARKS

UNITS [mm/in]		SCALE 5 : 1	COUNT ▲ 2	DESCRIPTION OF REVISIONS DIS-D-00001840	DESIGNED TP. MATSUMOTO	CHECKED TS. NOBE	DATE 17. 01. 30
------------------	--	----------------	--------------	--------------------------------------------	---------------------------	---------------------	--------------------

HRS HIROSE ELECTRIC CO., LTD.	APPROVED : KY. SHIMIZU	16. 08. 30	DRAWING NO.	EDC-356161-12-01
	CHECKED : TO. KATAYAMA	16. 08. 30	PART NO.	H2. 4-R-SR2(12)
	DESIGNED : TP. MATSUMOTO	16. 08. 29	CODE NO.	CL338-0601-8-12
	DRAWN : TP. MATSUMOTO	16. 08. 29		