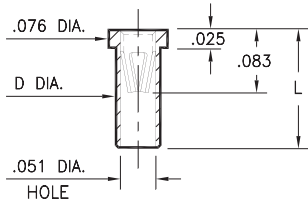


PIN RECEPTACLES

FOR .025" - .037" DIAMETER PINS AND .025" SQUARE PINS

0305

0305-X-15-XX-47-XX-10-0
Solder mount in .059/.061 mounting hole
Also available on 8mm or 24mm wide carrier tape: See chart for details
Order as: 0305-X-57-XX-47-XX-10-0



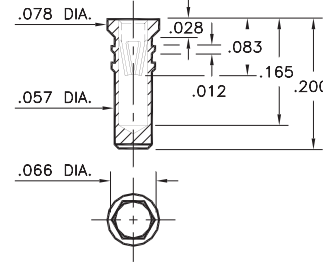
Basic Part Number	Length L	Dia. D
0305-0	.095	.056
0305-1	.105	.058
0305-2	.155	.058

T&R Packaging

Basic Part Number	Tape Width	Parts per 13" Reel
0305-0	8mm	6,000
0305-1	8mm	6,000
0305-2	24mm	1,500

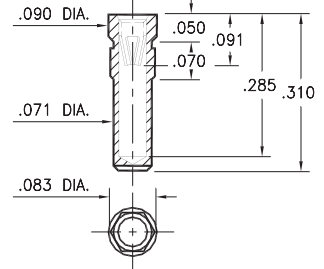
0279

0279-0-15-XX-47-XX-10-0
Hex press-fit in .062 plated through-hole



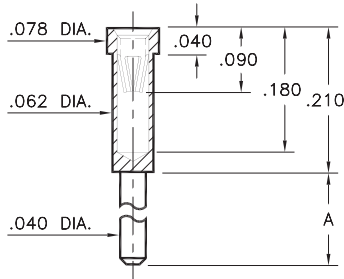
0330

0330-0-15-XX-47-XX-10-0
Hex press-fit in .079 plated through-hole



0300/8300

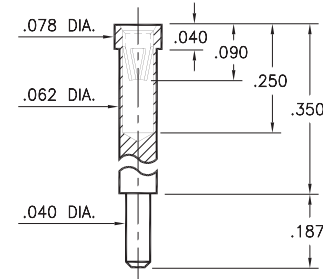
X300-X-15-XX-47-XX-10-0
Solder mount in .042 min. mounting hole



Basic Part Number	Length A
0300-1	.110
0300-2	.187
8300-0	.140

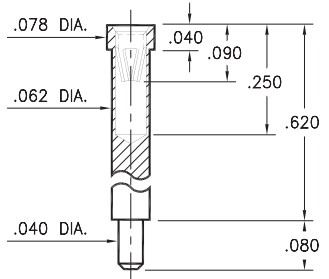
0301

0301-1-15-XX-47-XX-10-0
Solder mount in .042 min. mounting hole



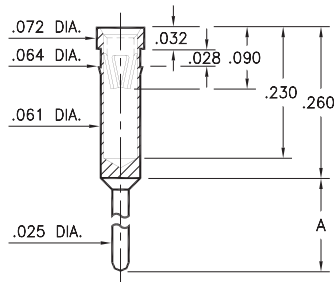
0309

0309-2-15-XX-47-XX-10-0
Solder mount in .042 min. mounting hole



0399

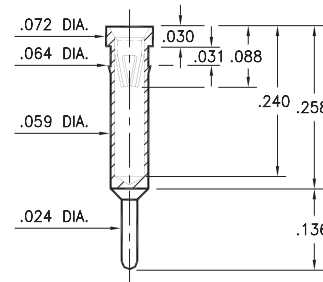
0399-X-15-XX-47-XX-04-0
Press-fit in .062 mounting hole



Basic Part Number	Length A
0399-0	.230
0399-1	.180

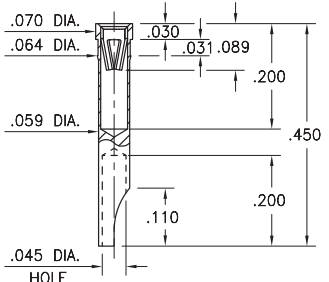
1304

1304-0-15-XX-47-XX-04-0
Press-fit in .061 mounting hole



1134

1134-0-18-15-47-27-10-0
Press-fit in .061 mounting hole



SPECIFICATIONS:

Shell Material: Brass Alloy 360, 1/2 Hard
Contact Material: Beryllium Copper Alloy 172, HT
Dimensions: Inches
Tolerances On: Lengths: ±.005
Diameters: ±.002
Angles: ± 2°



ORDER CODE: **XXXX - X - XX - XX - 47 - XX - XX - 0**

BASIC PART #

SPECIFY SHELL FINISH:

- 01 200 μ" TIN/LEAD OVER NICKEL
- ◆ 80 200 μ" TIN OVER NICKEL (RoHS)
- ◆ 15 10 μ" GOLD OVER NICKEL (RoHS)

SPECIFY CONTACT FINISH:

- 01 200 μ" TIN/LEAD OVER NICKEL
- ◆ 80 200 μ" TIN OVER NICKEL (RoHS)
- ◆ 27 30 μ" GOLD OVER NICKEL (RoHS)

SELECT CONTACT:

#47 CONTACT (DATA ON PAGE 256)

(For alternate contact choices, see group D on page 248)

