

# Housing - HC-D 7-AML-24/GR/PA - 1772272


Please be informed that the data shown in this PDF Document is generated from our Online Catalog. Please find the complete data in the user's documentation. Our General Terms of Use for Downloads are valid (<http://phoenixcontact.com/download>)



HEAVYCON panel mounting base D7, with single locking latch, height 24 mm, straight, PA



## Key Commercial Data

Packing unit	10 STK
GTIN	 4 017918 036942
GTIN	4017918036942

## Technical data

### Dimensions

Height	24 mm
Width	38 mm
Length	24 mm
Length of the assembly cutout	21 mm
Width of the assembly cutout	21 mm

### Ambient conditions

Degree of protection of housing (IP)	IP54
	IP65 (with sealing screw)
Ambient temperature (operation)	-40 °C ... 125 °C

### General

Note	for contact inserts HC-A03, A04, D07, D08, Q02, Q03, Q04, Q05, Q07, Q12
Size	D7
Housing type	Panel mounting base
Locking type	with single locking latch
Screw connection	none
Housing material	PA

# Housing - HC-D 7-AML-24/GR/PA - 1772272

## Technical data

### General

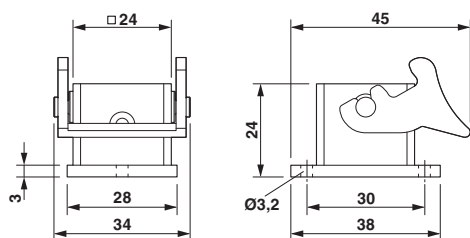
Housing surface material	PA, light gray
Seal material	NBR
Material lock	PA

### Environmental Product Compliance

China RoHS	Environmentally friendly use period: unlimited = EFUP-e
	No hazardous substances above threshold values

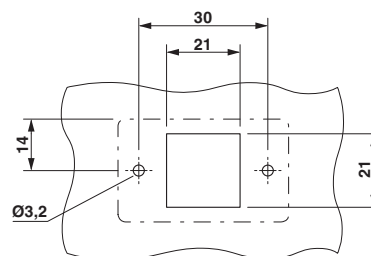
## Drawings

Dimensional drawing



Dimensional drawing

Dimensional drawing



Mounting cutout

Phoenix Contact 2018 © - all rights reserved  
<http://www.phoenixcontact.com>

PHOENIX CONTACT GmbH & Co. KG  
 Flachsmarktstr. 8  
 32825 Blomberg  
 Germany  
 Tel. +49 5235 300  
 Fax +49 5235 3 41200  
<http://www.phoenixcontact.com>