

Front adapters - FLKM 4X14-PA/SC/DIO/S7-1500 - 2907381

Please be informed that the data shown in this PDF Document is generated from our Online Catalog. Please find the complete data in the user's documentation. Our General Terms of Use for Downloads are valid (<http://phoenixcontact.com/download>)



VARIOFACE front adapter with screw connection, for SIMATIC® S7-1500 digital 35 mm modules, 4x 8 or 2x 8 channels can be connected.



Key Commercial Data

| | |
|--------------|---------------|
| Packing unit | 1 STK |
| GTIN | |
| GTIN | 4055626256511 |

Technical data

Ambient conditions

| | |
|---|------------------|
| Ambient temperature (operation) | -25 °C ... 60 °C |
| Ambient temperature (storage/transport) | -40 °C ... 70 °C |

General

| | |
|------------------------------------|---|
| Max. permissible operating voltage | < 50 V DC |
| Max. permissible current | 1 A (per path) |
| Max. permissible total current | 3 A (per byte when supplying from the module side) 12 A (When supplying via the front adapter) |
| Nominal operating mode | 100% operating factor |
| Degree of protection | IP20 |

Connection data 1

| | |
|---------------------------------|-------------------|
| Connection name | Field level |
| Connection method | IDC/FLK pin strip |
| Number of connections | 4 |
| Number of positions | 14 |
| Channels which can be connected | 32 |
| Pitch | 2.54 mm |

Front adapters - FLKM 4X14-PA/SC/DIO/S7-1500 - 2907381

Technical data

Connection data 2

| | |
|---------------------------------|-------------------|
| Connection name | Field level |
| Connection method | IDC/FLK pin strip |
| Number of connections | 2 |
| Number of positions | 14 |
| Channels which can be connected | 16 |
| Pitch | 2.54 mm |

Connection data 3

| | |
|----------------------------------|---|
| Connection name | Supply |
| Connection method | Screw connection |
| Stripping length | 10 mm |
| Conductor cross section solid | 0.25 mm ² ... 1.5 mm ² (with ferrule) |
| | 0.5 mm ² ... 2.5 mm ² (without ferrule) |
| Conductor cross section flexible | 0.25 mm ² ... 1.5 mm ² (with ferrule) |
| | 0.5 mm ² ... 2.5 mm ² (without ferrule) |
| Torque | 0.4 Nm |

Supported controller

| | |
|---------------------|---------------------|
| Controller | SIEMENS S7-1500 |
| - suitable I/O card | 6ES7 521-1BH00-0AB0 |
| | 6ES7 521-1BH50-0AA0 |
| | 6ES7 521-1BL00-0AB0 |
| | 6ES7 522-1BH00-0AB0 |
| | 6ES7 522-1BH01-0AB0 |
| | 6ES7 522-1BL00-0AB0 |
| | 6ES7 522-1BL01-0AB0 |
| | 6ES7 522-1BH00-0AB1 |

Standards and Regulations

| | |
|-----------------------|-------------|
| Standards/regulations | IEC 61131-2 |
| Rated surge voltage | 0.5 kV |
| Degree of pollution | 2 |
| Overvoltage category | II |

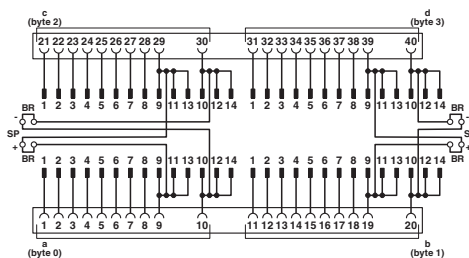
Environmental Product Compliance

| | |
|------------|---|
| China RoHS | Environmentally Friendly Use Period = 50 |
| | For details about hazardous substances go to tab "Downloads", Category "Manufacturer's declaration" |

Drawings

Front adapters - FLKM 4X14-PA/SC/DIO/S7-1500 - 2907381

Circuit diagram



Connection scheme for FLKM 4X14-PA/.../DIO/S7-1500

Approvals

Approvals

Approvals

EAC / UL Listed / cUL Listed / cULus Listed

Ex Approvals

Approval details

| | | |
|-----|--|-------------------------|
| EAC | | RU C- DE.A*30.B00767 |
|-----|--|-------------------------|

| | | | |
|-----------|--|---|---------------|
| UL Listed | | http://database.ul.com/cgi-bin/XYV/template/LISEXT/1FRAME/index.htm | FILE E 238705 |
|-----------|--|---|---------------|

| | | | |
|------------|--|---|---------------|
| cUL Listed | | http://database.ul.com/cgi-bin/XYV/template/LISEXT/1FRAME/index.htm | FILE E 238705 |
|------------|--|---|---------------|

| | | | |
|--------------|--|--|--|
| cULus Listed | | | |
|--------------|--|--|--|

Phoenix Contact 2018 © - all rights reserved
<http://www.phoenixcontact.com>

PHOENIX CONTACT GmbH & Co. KG
Flachmarktstr. 8
32825 Blomberg
Germany
Tel. +49 5235 300
Fax +49 5235 3 41200
<http://www.phoenixcontact.com>