

DIMENSIONS IN INCHES (METRIC-MILLIMETERS);
DO NOT SCALE DRAWING..

Drawing Number

CWR-227-XX-0003

NOTES:

1. Dimensions are in inches; dimensions in () are in millimeters.
2. Metric equivalents are given for general information only, and are based upon 1.00 inches equals (25.4) millimeters.
3. Unless otherwise specified, tolerances are $\pm .005$ (.13) for three place decimals and $\pm .01$ (.25) for two place decimals.
4. Polarization rib slot (RS-2) omitted in size 10 and 14 connectors.

MATERIALS:

PLASTIC PARTS - UL94V-0 Thermoplastic (blue, std.), flame retardant.
CONTACTS - Phosphor bronze, standard.
CONTACT PLATING - Full plating 100 Sn Pb (min.).

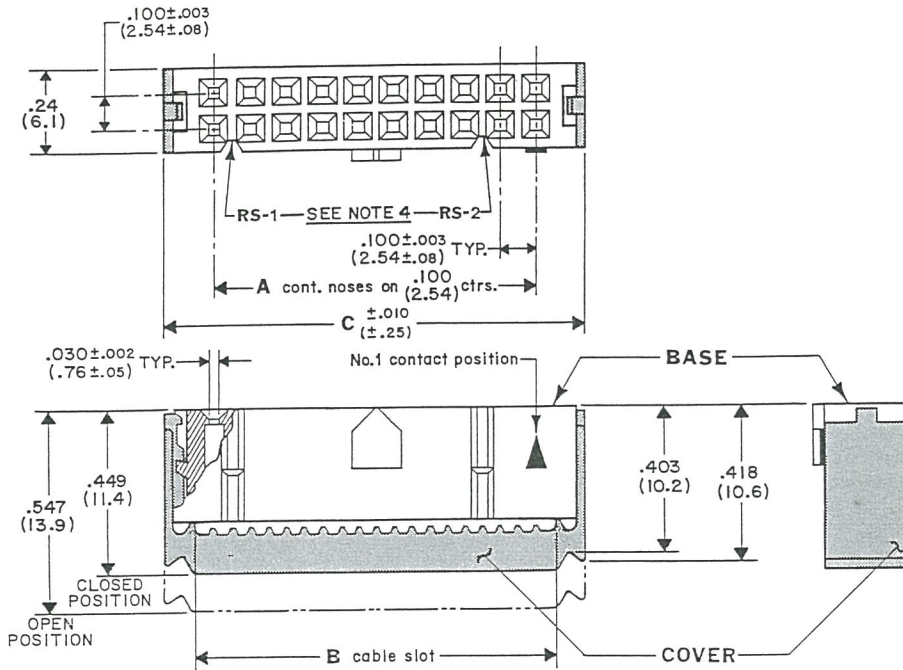
OPERATING STANDARDS:

TEMPERATURE RATING - 125°C.
CONTACT RATING - 1 Ampere.
DIELECTRIC STRENGTH - Over 500V.D.C. at sea level.
CONDUCTORS ACCEPTED - 28-30AWG solid or stranded.

CUSTOMER DRAWING

CONNECTOR DIMENSIONS

No.Conts.	A	B	C
10	.400 (10.16)	.515 (13.08)	.677 (17.20)
14	.600 (15.24)	.715 (18.16)	.877 (22.28)
16	.700 (17.78)	.815 (20.70)	.977 (24.82)
20	.900 (22.86)	1.015 (25.78)	1.177 (29.90)
26	1.200 (30.48)	1.315 (33.40)	1.477 (37.52)
34	1.600 (40.64)	1.715 (43.56)	1.877 (47.68)
40	1.900 (48.26)	2.015 (51.18)	2.177 (55.30)
50	2.400 (60.96)	2.515 (63.88)	2.677 (68.00)
60	2.900 (73.66)	3.015 (76.58)	3.177 (80.70)



REVISIONS

ATTENTION
THIS DRAWING AND ITS ATTACHMENTS, IF ANY, ARE PROPRIETARY TO CW INDUSTRIES AND DESCRIBE DESIGNS THAT ARE CONFIDENTIAL AND MUST NOT BE DISCLOSED UNLESS AUTHORIZED, IN WRITING, BY AN OFFICER OF CW INDUSTRIES.....

CW INDUSTRIES
Southampton, Pa. 18966

TOLERANCES UNLESS OTHERWISE SPECIFIED
2 Place decimal $\pm .010$ METRIC
3 Place decimal $\pm .005$ 1 Place dec. $\pm .25$ MM
Angles $\pm 1^\circ$ 2 Place dec. $\pm .13$ MM

SOCKET CONNECTOR PLAIN COVER
.100 x .100 CENTERS (.050 center flat cable)
W/KEYING

Made for
Drawn by L. Webber 10-8-90
Checker: G. Bisk 10/9/90
Eng. appl. G. Bisk 10/9/90

Division
CONNECTOR
Drawing Number
CWR-227-XX-0003

MASTER