

Fig.2(1:1)

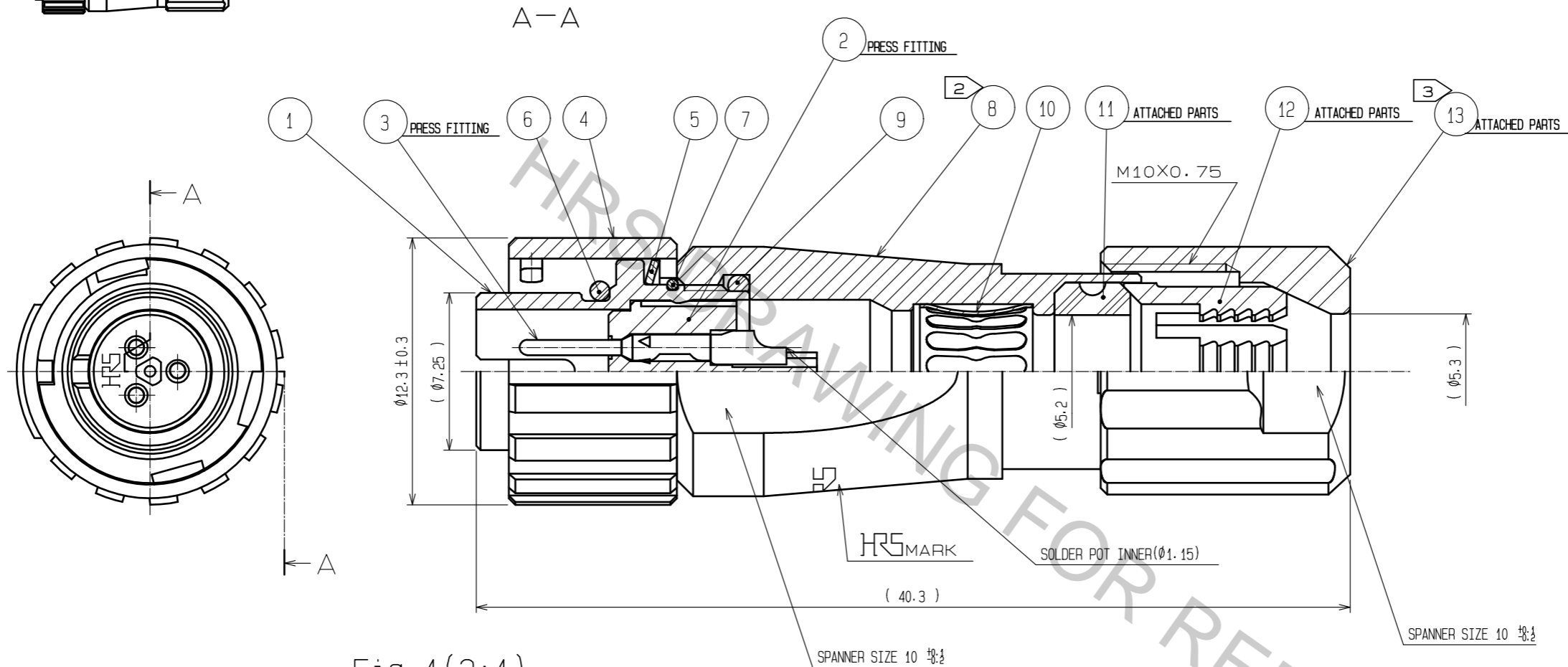
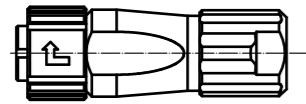
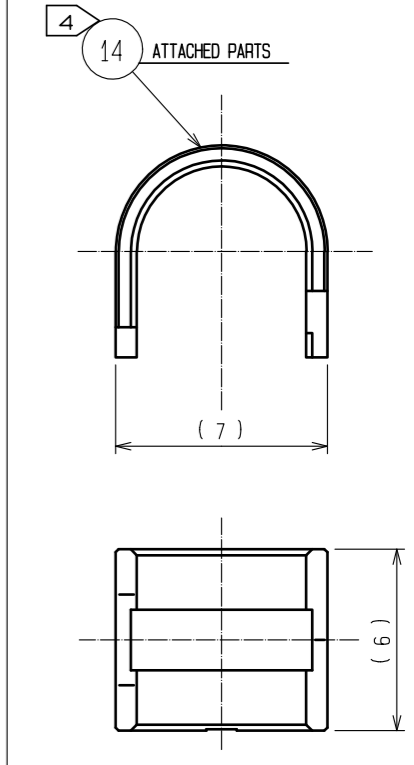
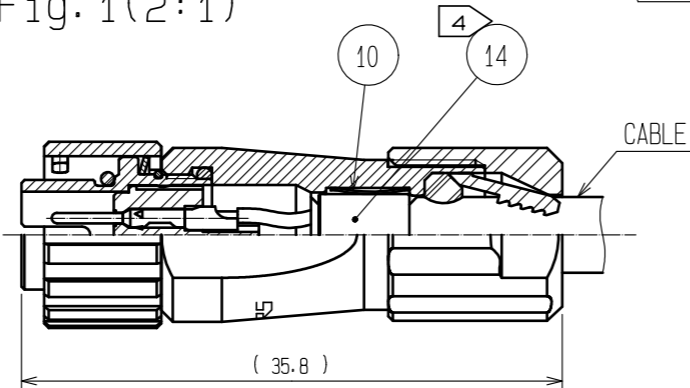


Fig.1(2:1)



- NOTES
- ① PLATING(REF.NO.③)  
 CONTACT AREA : GOLD 0.2#m min  
 OTHERS : GOLD AND NICKEL  
 UNDER PLATING : NICKEL 2#m min
  - ② THE RECOMMENDED CLAMP TORQUE OF REF.NO.⑧ TO BE 1 TO 1.5N·m.  
 THREAD LOCKER TO THE THREADED PORTION OF REF.NO.① IS RECOMMENDED TO PREVENT REF.NO.⑧ FROM LOOSING.  
 RECOMMENDED THREAD LOCKER:LOCTITE 263, HENKEL JAPAN LTD.
  - ③ THE RECOMMENDED CLAMP TORQUE OF REF.NO.⑬ TO BE 0.8N·m.  
 THREAD LOCKER AND LOCK PRIMER TO THE THREADED PORTION M10X0.75 OF REF.NO.⑧ IS RECOMMENDED TO PREVENT REF.NO.⑬ FROM LOOSING.  
 RECOMMENDED THREAD LOCKER AND LOCK PRIMER : LOCTITE 263, LOCK PRIMER 7649, HENKEL JAPAN LTD.
  - ④ FASTEN REF.NO.⑭ TO THE CABLE WITH THE CABLE CRIMPING TOOL.  
 AND MAKE REF.NO.⑭ CONTACT WITH REF.NO.⑩ (REFER TO Fig.1).  
 REFER TO THE TECHNICAL SPECIFICATION ETAD-C0099 FOR DETAILS.  
 APPLICABLE CABLE CRIMPING TOOL : HR10A-TC-02(THE HOLE DIAMETER FOR CRIMPING:φ5.3)
  - ⑤ Fig.2 SHOWS THE APPEARANCE AFTER ASSEMBLY.

NO.	MATERIAL	FINISH . REMARKS	NO.	MATERIAL	FINISH . REMARKS
7	STAINLESS STEEL		14	BRASS	NICKEL PLATING
6	CHLOROPRENE RUBBER	(BLACK)	13	PPS	(NATURAL) UL94V-0
5	STAINLESS STEEL		12	POLYAMIDE	(NATURAL) UL94V-0
4	ZINC ALLOY	NICKEL PLATING	11	CHLOROPRENE RUBBER	(BLACK)
3	COPPER ALLOY	①	10	PHOSPHOR BRONZE	NICKEL PLATING
2	PPS	(BLACK) UL94V-0	9	CHLOROPRENE RUBBER	(BLACK)
1	ZINC ALLOY	NICKEL PLATING	8	ZINC ALLOY	NICKEL PLATING

UNITS	SCALE	COUNT	DESCRIPTION OF REVISIONS	DESIGNED	CHECKED	DATE
mm	4 : 1	△				
HIROSE ELECTRIC CO., LTD.			APPROVED : HY. KOBAYASHI 18.02.21 CHECKED : HY. KOBAYASHI 18.02.21 DESIGNED : TY. SUZUKI 18.02.21 DRAWN : HM. SAITO 18.02.21	DRAWING NO. EDC-114147-31-00 PART NO. LF07WBP-3P(31) CODE NO. CL136-0004-0-31		