

5

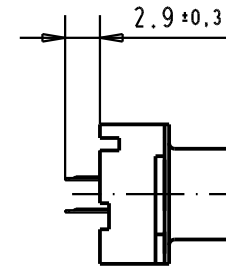
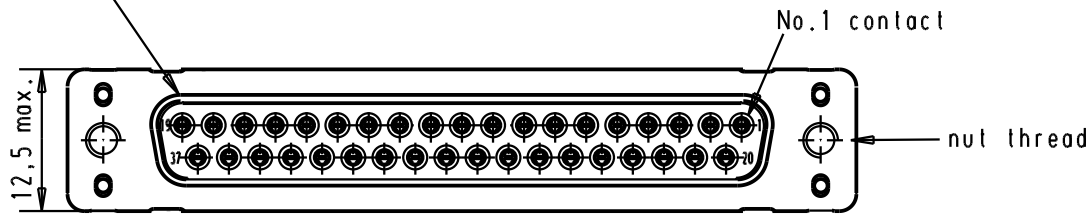
4

3

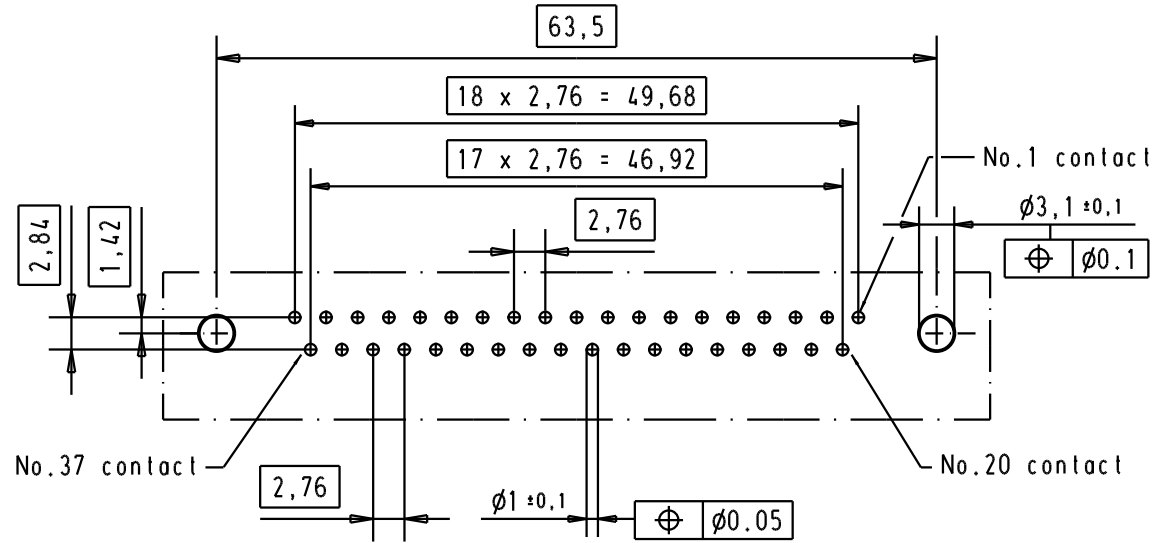
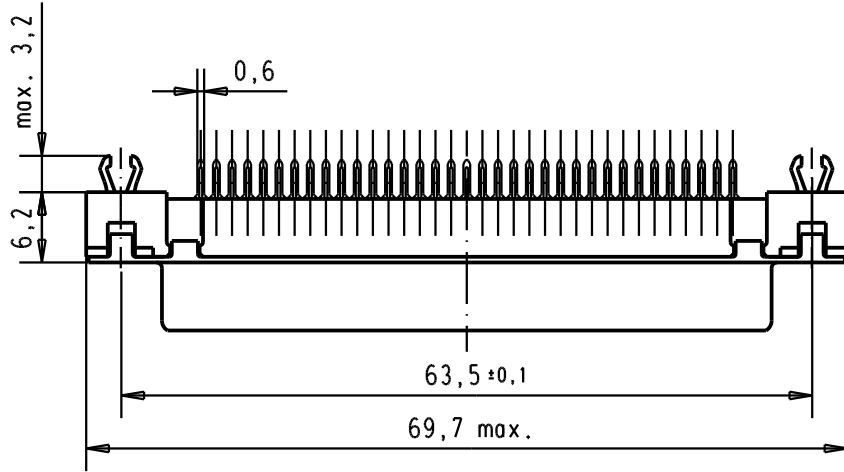
2

1

Mating face according to : MIL-C24308 / DIN 41652 / CECC 75301-802





Printed board layout  
component side



Connector retention and insertion forces on the PCB = 25 / 80 newtons

A

09 66 455 3511	M3	1							 All Dim. in mm Orig. Size DIN A 4	D-sub, High temperature, 37 poles, female, straight, with solder pins 2.9, nuts and grounding board lock.	Maßstab/ Scale  1,5:1
09 66 455 6511	M3	2				Detail.	05/03/02	CV			
09 66 455 7511	M3	3				Insp.					
09 66 455 3512	4-40 UNC	1				Stand.					
09 66 455 6512	4-40 UNC	2	31892	05/05/04	JH	HARTING EURL F-95972 Paris				TB 09 66 455 x51x	Blatt/ Page 1 /
09 66 455 7512	4-40 UNC	3	29723	05/03/02	CV						
Part number	Nut thread	Performance level	Mod.	Dat.	Name				Sub.		