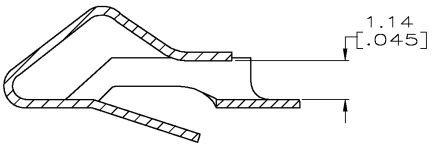
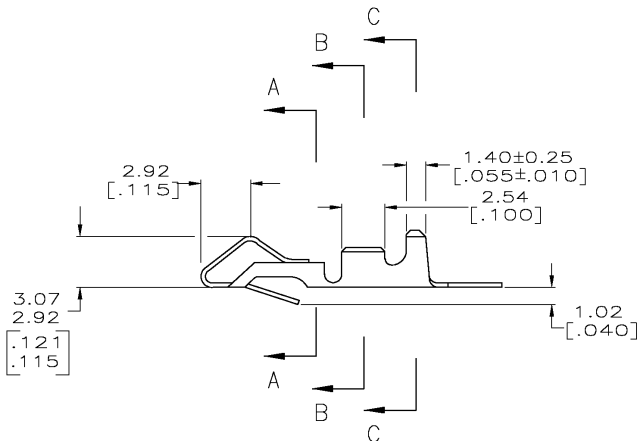
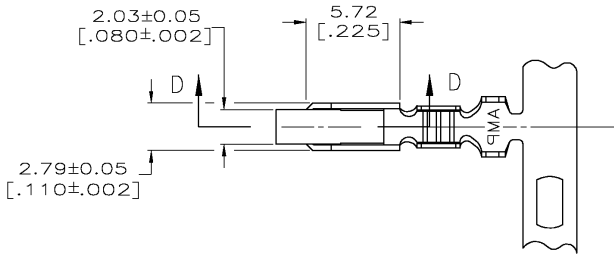
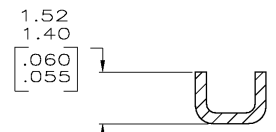


LOC	DIST	REVISIONS			
P	LTN	DESCRIPTION	DATE	DWN	APVD
CM	00	W	REV PER ECN 0638-0383-03	21AUG03	SC JE

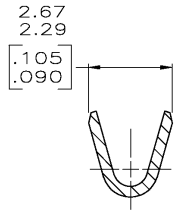
- ① 0.00203 [.000080] MIN BRIGHT TIN-LEAD OVER
0.00127 [.000050] MIN NICKEL.
- ② 0.00330 [.000130] MAX PRE-TIN.
- ③ 0.00013 [.000005] GOLD OVER 0.00127 [.000050]
MIN NICKEL ALL OVER AND 0.00076 [.000030] MIN
GOLD ON CONTACT AREA.
- 4. WIRE RANGE: 0.2-0.9mm² (24-18 AWG).
INSULATION RANGE: 2.79 [.110] DIA MAX.
- 5. DIMENSIONS IN BRACKETS ARE IN INCHES.
- ⑥ 0.00203 [.000080] MIN BRIGHT TIN OVER
0.00127 [.000050] MIN NICKEL.



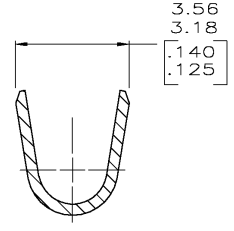
SECTION D-D
SCALE 10:1



SECTION A-A
SCALE 10:1



SECTION B-B
SCALE 10:1



SECTION C-C
SCALE 10:1

METRIC

MINI	SEE 3-640706-1	⑥	3-640252-1
MINI	SEE 640706-2	②	640252-2
MINI	SEE 640706-1	①	640252-1
APPLICATOR	LOOSE PIECE	FINISH	PART NO

THIS DRAWING IS A CONTROLLED DOCUMENT.		DWN S. CARPENTER	21AUG2003	Tyco Electronics Corporation Harrisburg, PA 17105
DIMENSIONS: INCHES		CHK J. ELLIS	21AUG2003	
TOLERANCES UNLESS OTHERWISE SPECIFIED:		APVD J. ELLIS	21AUG2003	NAME RECEPTACLE, SL-156
0 PL/C ±	1 PL/C ±	PRODUCT SPEC		SIZE: A2 CAGE CODE: 00779 DRAWING NO: 640252
2 PL/C ±	3 PL/C ±	APPLICATION SPEC		
4 PL/C ±	ANGLES ±	WEIGHT		RESTRICTED TO
MATERIAL 0.33 [.013] BRASS	FINISH SEE TABLE	CUSTOMER DRAWING		SCALE: 5:1 SHEET 1 OF 1 REV W

A/C BUSINESS GROUP, 3323 177-34 KIM SALMONY

640252