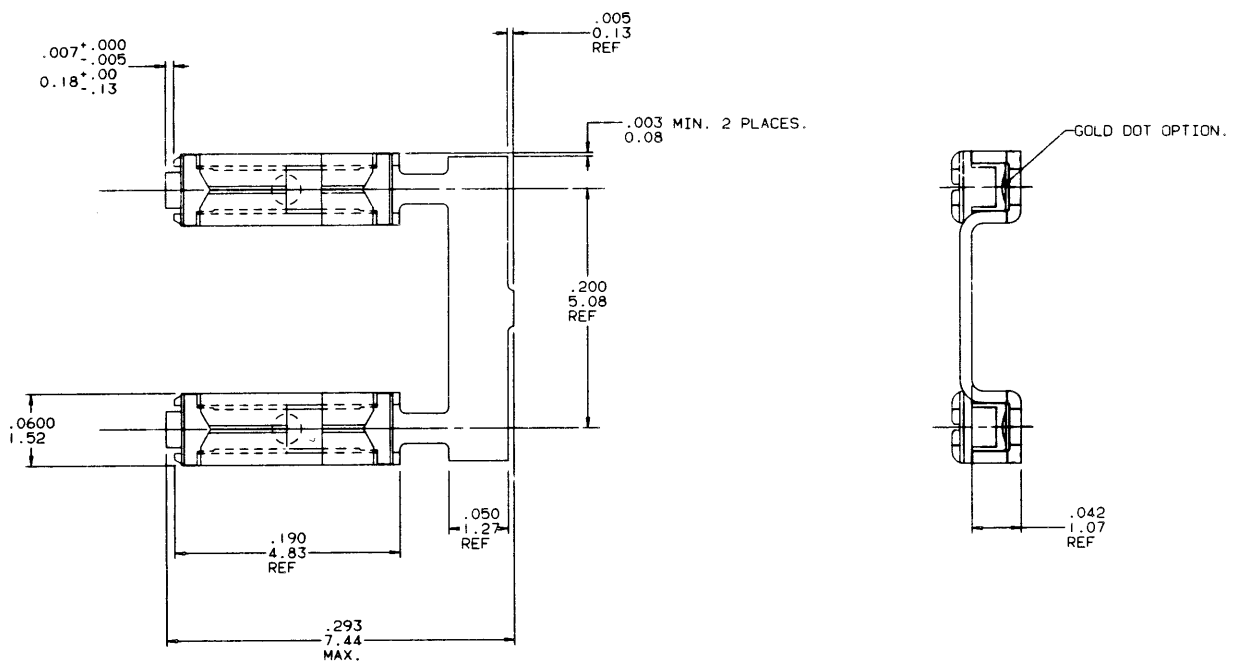


PRODUCT NO	TERMINAL BODY	TERMINAL SPRING
75800-001	1/4 HARD BRASS WITH GOLD FLASH AND 40 $\mu$ /1.02 $\mu$ Au IN CONTACT AREA.	.0048/.122 THICK HEAT TREATED BE-CU WITH GOLD FLASH.
75800-002	1/4 HARD BRASS WITH TIN-LEAD PLATING.	.0048/.122 THICK HEAT TREATED BE-CU WITH TIN PLATING.
75800-003	O B S O L E T E	
75800-004	1/4 HARD Cu Ni WITH .001/.03 MIN THICK GOLD DOT.	.0048/.122 THICK HEAT TREATED BE-CU WITH GOLD FLASH.

REVISIONS			
REV	DESCRIPTION	BY	DATE
A	RELEASE-REDRAW	JGS	5/6/91



SHEET INDEX		ISSUE	A											CUSTOMER COPY	DuPont Electronics		DU PONT	
SH NO		I												CODE IDENT	22526			
MODEL		I		DO NOT SCALE DRAWING		TOLERANCE UNLESS OTHERWISE NOTED		INCH/MM		MATERIAL		DR		DATE		TITLE		
						.00±.01/.0±.3				J. SHREINER		5/6/91		MINI JUMP TERMINAL .200 C.C.				
FABULATION SHEETS REQUIRED		YES NO		THIRD ANGLE PROJECTION		LINEAR		.000±.005/.00±.13		FINISH		ENGR		5/6/91		SCALE SIZE DWG NO CAD		
						.0000±.0020/.000±.05				M. HAHN		5/6/91		20/1 D 75800		SHEET 1 OF 1		
				INCH MM		ANGLES 0° ±2°				APPD		5/6/91						

NOTE: This print is the property of and contains proprietary designs of THE DUPONT COMPANY. No part of the design shown on this print may be used in any way without the written consent of DUPONT ELECTRONICS, New Cumberland, PA.