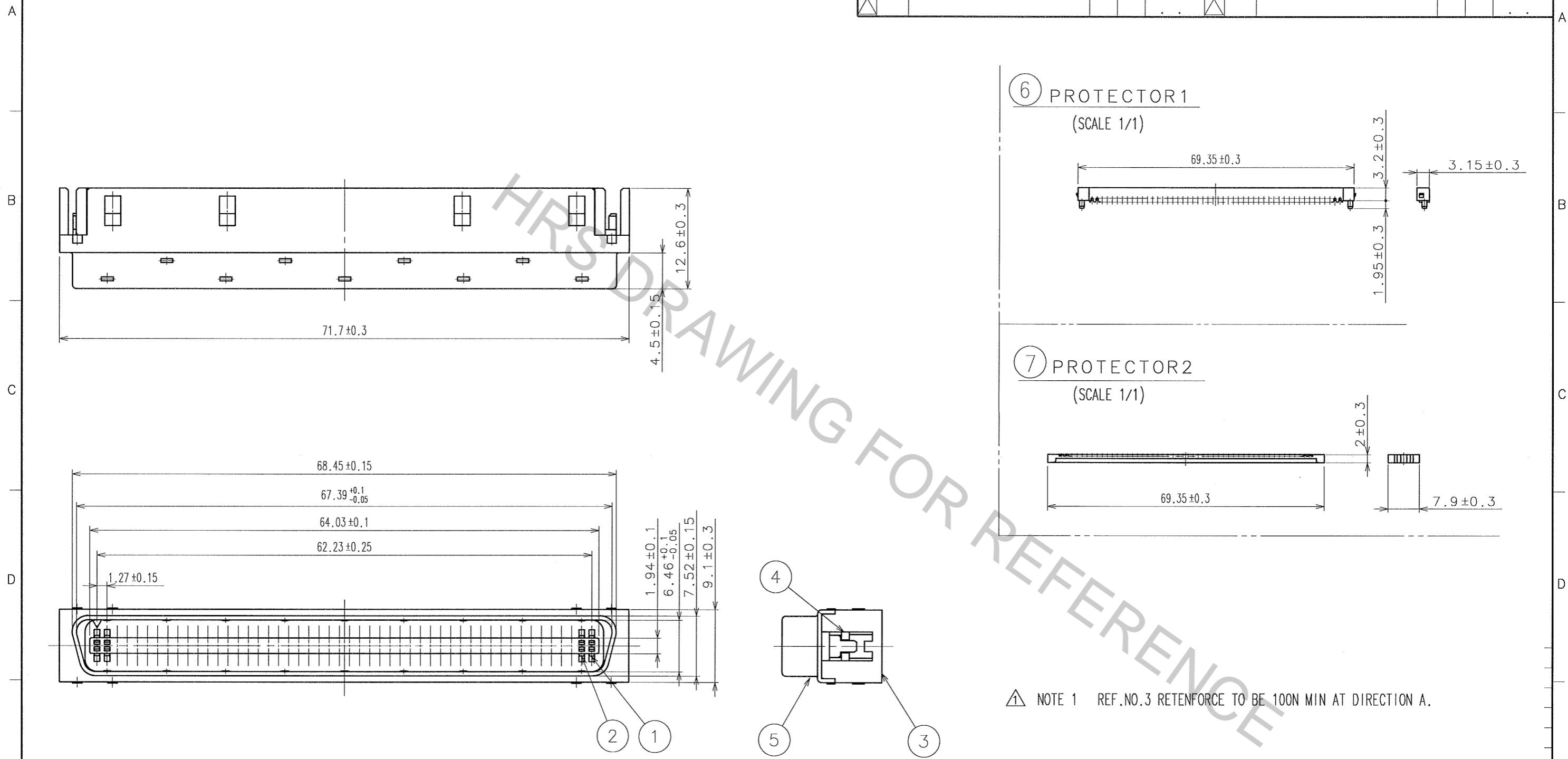


Apr.1.2017 Copyright 2017 HIROSE ELECTRIC CO., LTD. All Rights Reserved.

COUNT	DESCRIPTION OF REVISIONS	BY	CHKD	DATE	COUNT	DESCRIPTION OF REVISIONS	BY	CHKD	DATE
1	DIS-E-3269	E.M	H.T	96.11.12					
2	DIS-E-000197	Y.S	Y.E	05.08.29					



NOTE 1 REF.NO.3 RETENFORCE TO BE 100N MIN AT DIRECTION A.

TO
Q1

NO.	MATERIAL	FINISH, REMARKS	NO.	MATERIAL	FINISH, REMARKS
4	PBT	UL94V-0 (BLACK)	7	PBT	UL94V-0 (BLACK)
3	PBT	UL94V-0 (BLACK)	6	PBT	UL94V-0 (BLACK)
2	BERYLLIUM COPPER	CONTACT AREA: GOLD PLATED IDC AREA: GOLD FLASH PLATING	5	STEEL	NICKEL PLATED
1	BERYLLIUM COPPER	CONTACT AREA: GOLD PLATED IDC AREA: GOLD FLASH PLATING			

CODE NO. (OLD)	DRAWN	DESIGNED	CHECKED	APPROVED	RELEASED
	M. NAKAMURA	M. NAKAMURA	S. KIKUTA	A. NAKAZAWA	
	90.03.14	90.03.14	90.03.14	90.03.14	

SCALE	DRAWING NO.	PART NO.
2 : 1	EDC3-040393	DX30AM-100P
UNITS	mm	CODE NO.
	HRS HIROSE ELECTRIC CO., LTD	CL230-5031-0