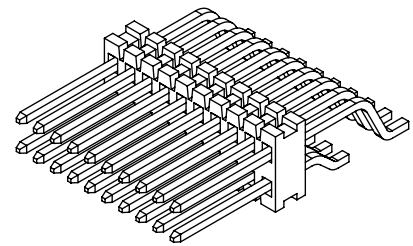


REVISION X

NOTES:

1. $\text{\textcircled{C}}$ REPRESENTS A CRITICAL DIMENSION.
2. SHEAR TAILS TO DIMENSION SHOWN.
3. MAXIMUM BURR: .003[0.08].
4. MAXIMUM CUT FLASH: .015 [0.38].
5. NO FLASH ALLOWED IN OR AROUND SURFACE MOUNT TAIL AREA.
6. MINIMUM PUSHOUT FORCE: .5 LB.
7. MINIMUM ENDWALL THICKNESS: .008 [0.20].



FTE-1XX-XX-X-DH-X-XX

No OF POSITIONS
-05 THRU -50
(PER ROW)

LEAD STYLE
-01: .075 POST
-02: .175 POST
-03: .120 POST

OPTION 2
-TR: TAPE & REEL PACKING
(SEE FIG 3, SHEET 2)

OPTION 1
-K: POLYIMIDE FILM PAD
(USE K-500-300,
SEE FIG 4, SHEET 2)

ROW SPECIFICATION
-DH: DOUBLE HORIZONTAL
(USE FTE-90-D)

PLATING SPECIFICATION
-G: 10 μ " SELECTIVE GOLD IN CONTACT AREA,
3 μ " SELECTIVE GOLD ON TAIL.

DO NOT SCALE FROM THIS PRINT

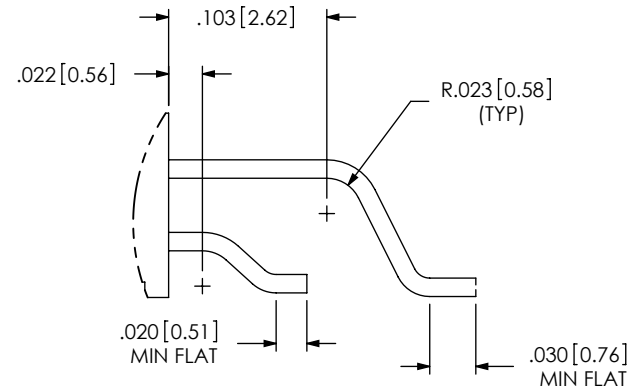
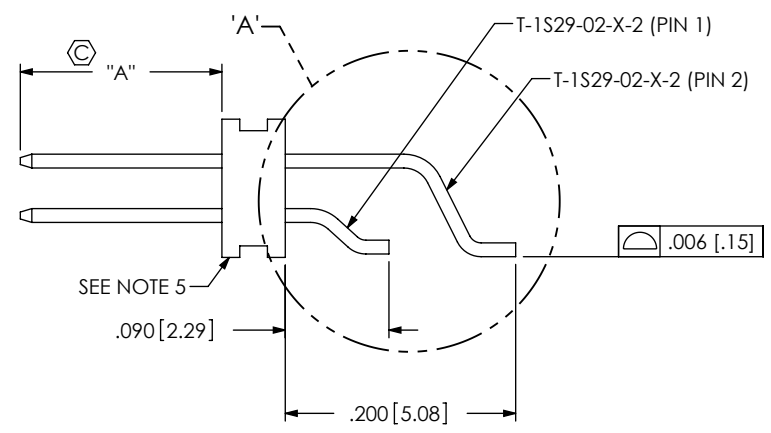
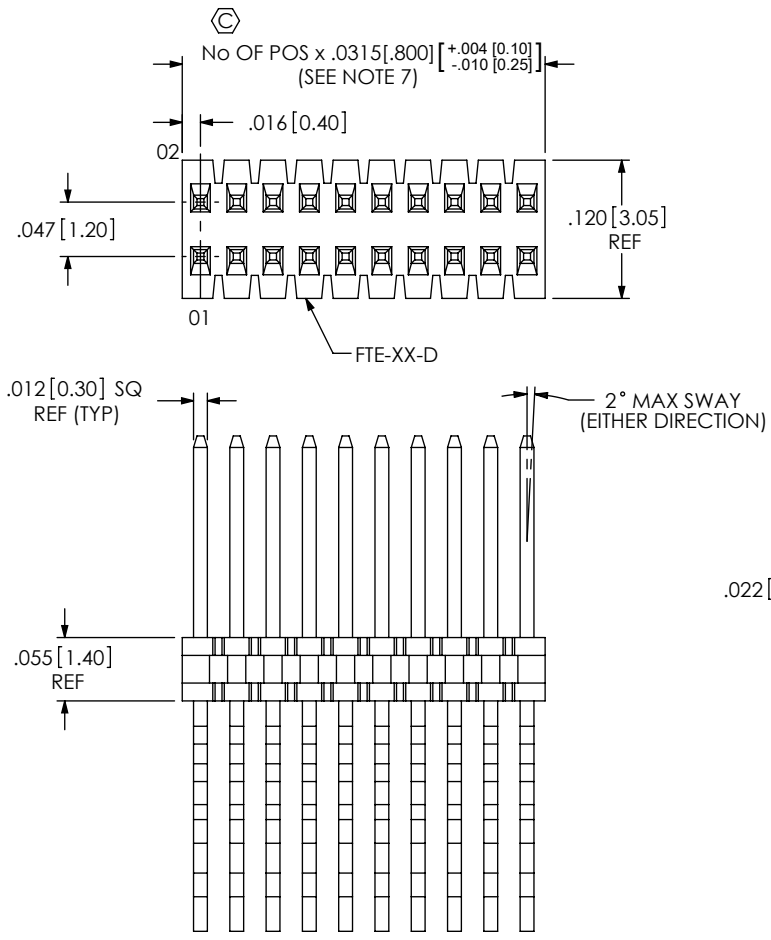
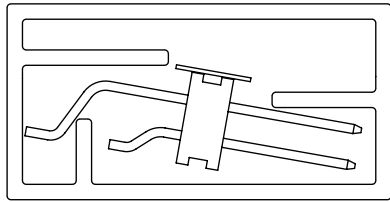


TABLE 1	
LEAD STYLE	"A"
-01	.075[1.91]
-02	.175[4.45]
-03	.120 [3.05]

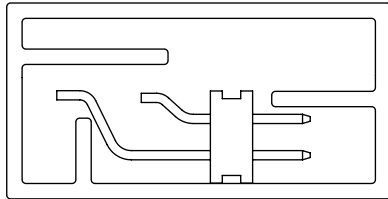
FIG 1
FTE-110-02-X-DH SHOWN

DETAIL 'A'
SCALE 8 : 1

<p>UNLESS OTHERWISE SPECIFIED, DIMENSIONS ARE IN INCHES. TOLERANCES ARE:</p> <p>DECIMALS ANGLES</p> <p>.XX: $\pm .01$ [0.3] 2°</p> <p>.XXX: $\pm .005$ [0.13]</p> <p>.XXXX: $\pm .0020$ [0.051]</p>	<p>PROPRIETARY NOTE</p> <p>THIS DOCUMENT CONTAINS INFORMATION CONFIDENTIAL AND PROPRIETARY TO SAMTEC, INC. AND SHALL NOT BE REPRODUCED OR TRANSFERRED TO OTHER DOCUMENTS OR DISCLOSED TO OTHERS OR USED FOR ANY PURPOSE OTHER THAN THAT WHICH IT WAS OBTAINED WITHOUT THE EXPRESSED WRITTEN CONSENT OF SAMTEC, INC.</p>		
		<p>520 PARK EAST BLVD., NEW ALBANY, IN 47150 PHONE: 812-944-6733 FAX: 812-948-5047 e-Mail: info@SAMTEC.com code 53322</p>	
<p>MATERIAL: DO NOT SCALE DRAWING SHEET SCALE: 3:1</p> <p>BODY: LCP, UL 94 V0, COLOR: BLACK TERMINAL: PHOS BRONZE</p>	<p>DESCRIPTION: .8MM X 1.2MM C.L. TERMINAL STRIP ASSM</p>	<p>DWG. NO. FTE-1XX-XX-X-DH-X-XX</p>	<p>BY: D. PURVIS 10/13/1998 SHEET 1 OF 2</p>

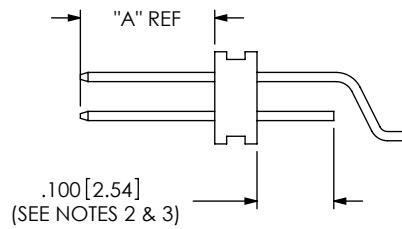


OPTIONS: -02, -03, -02-K, -03-K

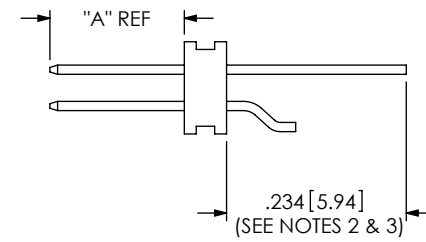


OPTIONS: -01, -01-K

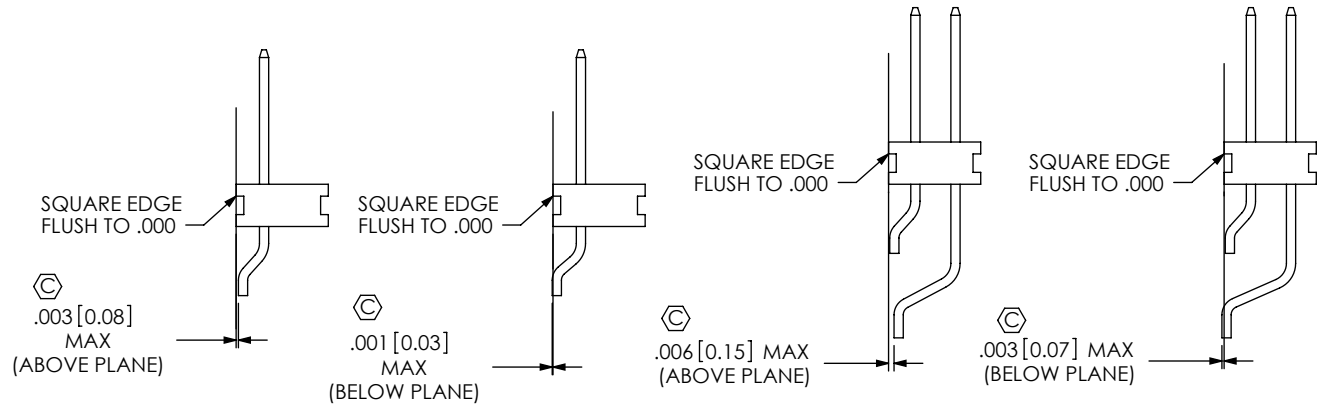
FIG 2
TUBE: PT-1-24-01-92
PLUG: TP-24



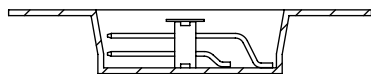
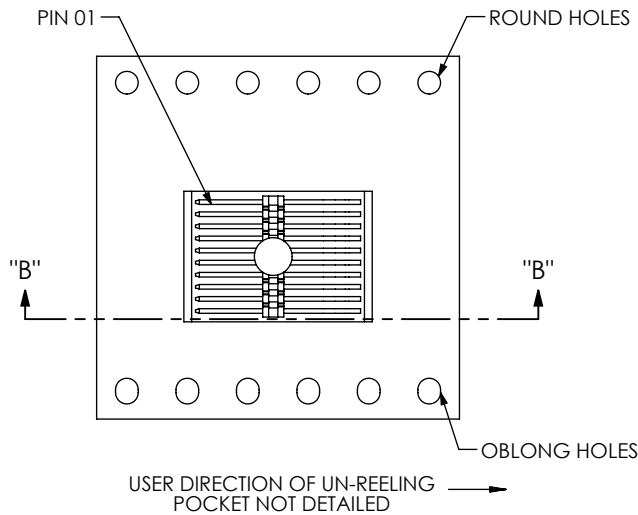
IN PROCESS 1



IN PROCESS 2



COPLANARITY VIEWS



SECTION "B"-"B"
SCALE 2:1

FIG 3
TAPE & REEL

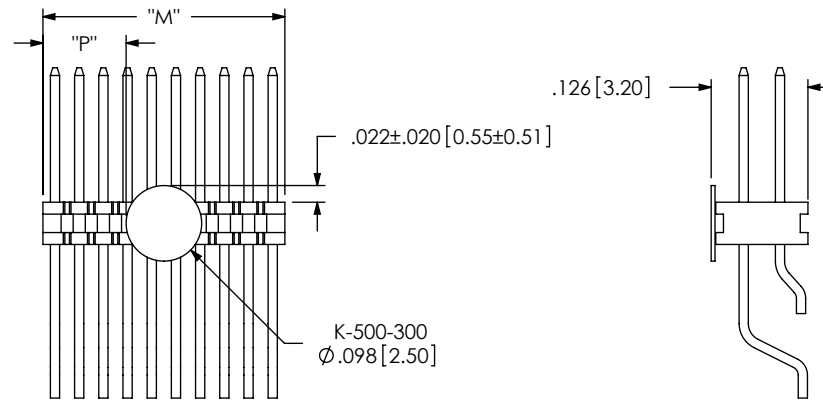


FIG 4
POLYIMIDE FILM PAD
(AVAILABLE ON -05 THRU -50 POS ONLY)

NOTE: "M" = USE MEASURED DIMENSION REF
"P" = ((M" - .098[2.50])/2) ±.020[0.51]

PROPRIETARY NOTE
THIS DOCUMENT CONTAINS INFORMATION CONFIDENTIAL AND PROPRIETARY TO SAMTEC, INC. AND SHALL NOT BE REPRODUCED OR TRANSFERRED TO OTHER DOCUMENTS OR DISCLOSED TO OTHERS OR USED FOR ANY PURPOSE OTHER THAN THAT WHICH IT WAS OBTAINED WITHOUT THE EXPRESSED WRITTEN CONSENT OF SAMTEC, INC.

DO NOT SCALE DRAWING

SHEET SCALE: 4:1



520 PARK EAST BLVD, NEW ALBANY, IN 47150
PHONE: 812-944-6733 FAX: 812-948-5047
e-Mail info@SAMTEC.com code 55322

DESCRIPTION: .8MM X 1.2MM C.L. TERMINAL STRIP ASSM

DWG. NO. **FTE-1XX-XX-X-DH-X-XX**

BY: D. PURVIS 10/13/1998 SHEET 2 OF 2