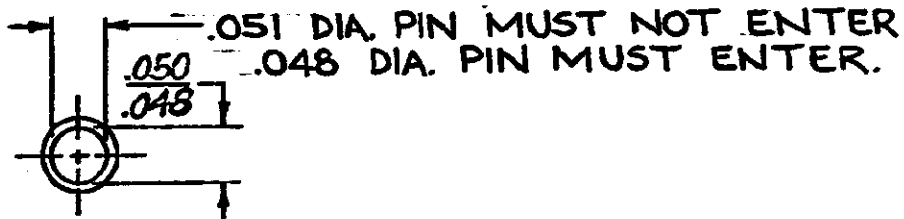
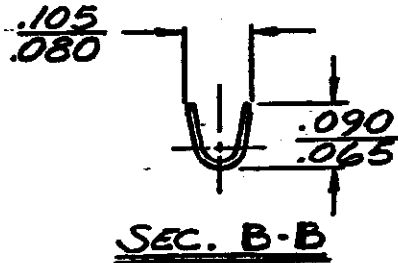
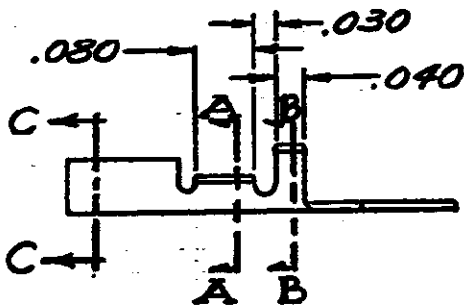
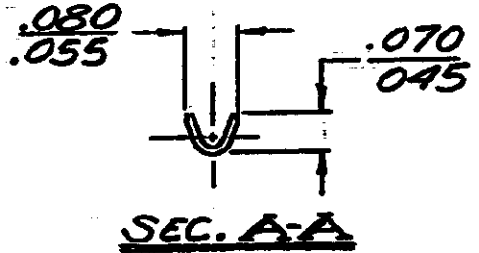
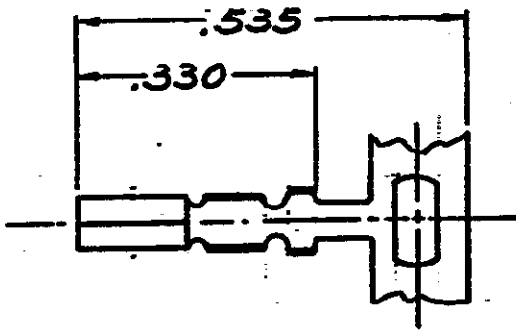


DRAWING MADE IN AMERICAN PROJECTION

NUMBER 61547



DIMENSIONS IN INCHES. DO NOT SCALE PRINT.

.008 PHOS. BRZ. - GOLD	61547-4
.008 PHOS. BRZ. - PRETIN	61547-2
.008 BRASS - PRETIN	61547-1
MAT'L & FINISH	PART. NO.

J	OBS-1 0304-93	DE	9/7/63
H	ADDED NOTE PER A-47	BY	8/22/63
G	OBS. -4 A 4515	BY	2/5/60
F	ADDED -4	TTI	5/6/60
E	REVISED	A-47	7/2/63
D	REVISED WIRE RANGE	A-47	8/5/62
C	CHANGED DIST.	A-47	7-20-61
B	ADDED -2	6360	3/2/60
A	REMOVED HAND STAMP RELEASED	M-1427	4/2/63
TR	REVISION RECORD	ECN	DATE

©1969 BY AMP INCORPORATED, ALL RIGHTS RESERVED. AMP PRODUCTS COVERED BY PATENTS AND/OR PATENTS PENDING.

CUSTOMER COPY REFERENCE ONLY

MATERIAL AND FINISH
SEE TABLE



AMP INCORPORATED
HARRISBURG, PENNSA.

WIRE RANGE INSULATION
#32-#20 .060 MAX

CLASS	---
TYPE	---

TOLERANCE EXCEPT AS NOTED	SCALE	LOT	NO	REV
±.015	±1" 4-1	W	A	61547 J

DR	J.R. KINKLE	DE	Kinkle 1-14-69
CHK	Kinkle 1-14-69	APP	

NAME .050 DIA PIN RECEPTACLE