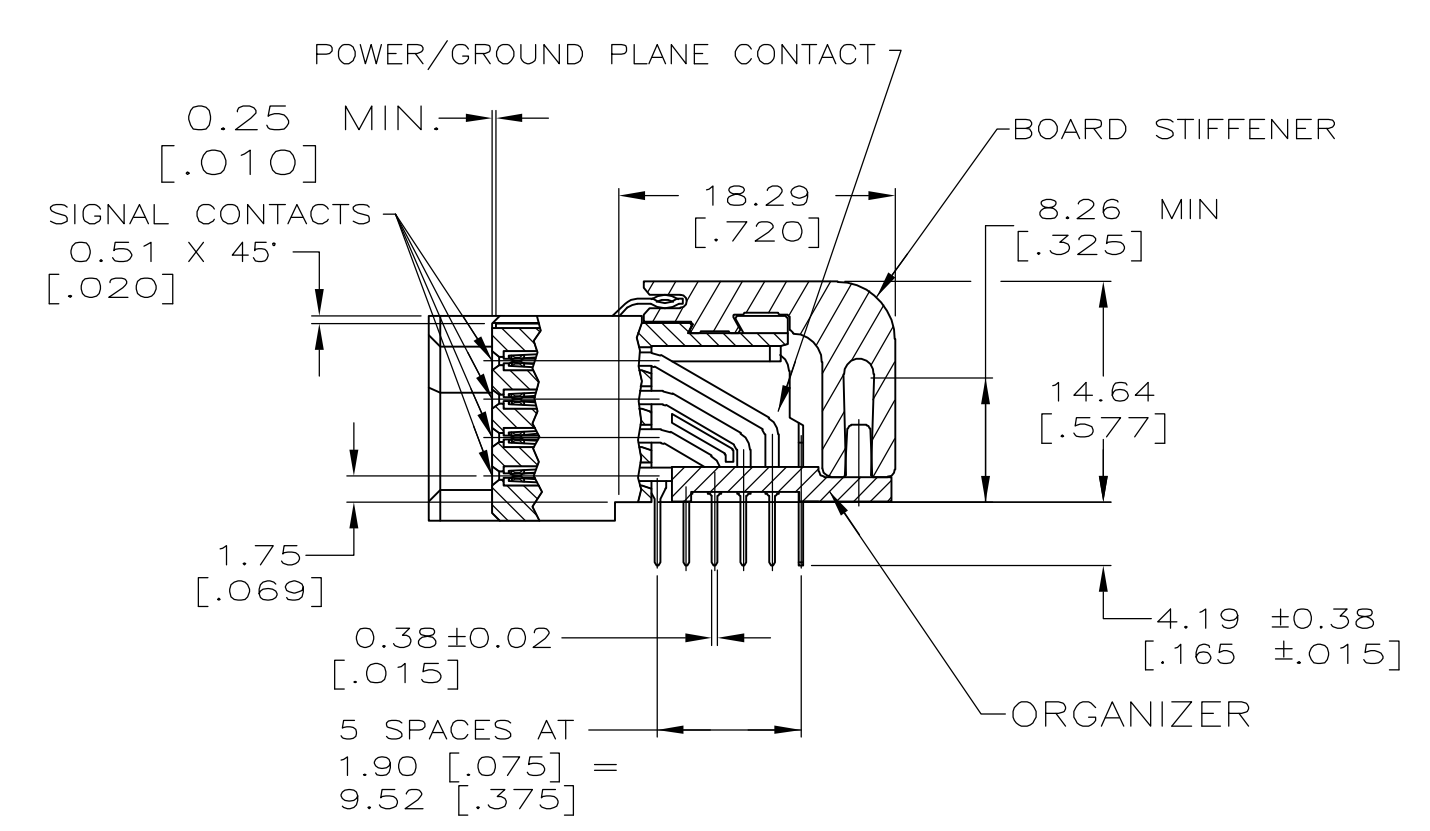


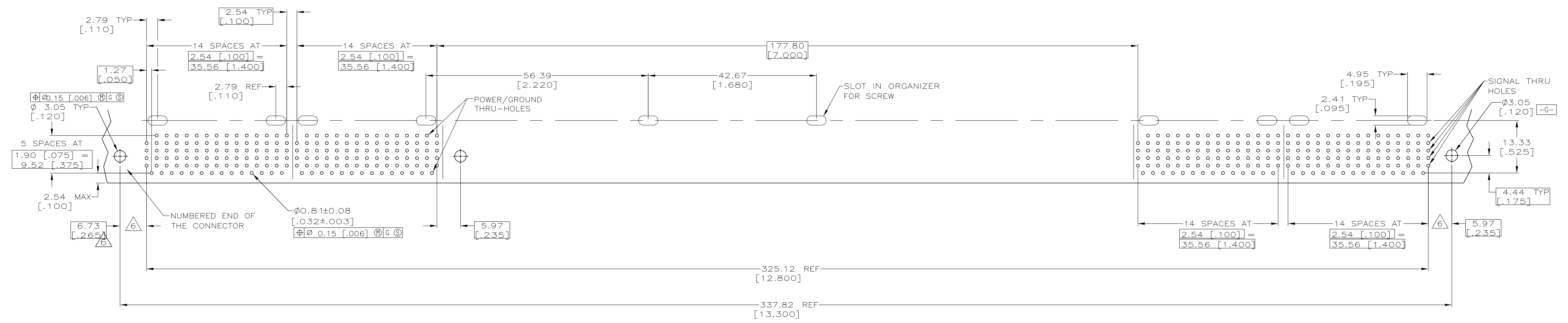
- ① HOUSING MATERIAL: LIQUID CRYSTAL POLYMER, COLOR: BLACK.
- ② CONTACT MATERIAL: PHOSPHOR BRONZE. UNS NUMBER 51100, PER ASTM B 103.
- ③ CONTACT FINISH:
 ON MATING SURFACES—
 FLASH GOLD OVER
 0.00076[.000030] MIN. PALLADIUM-NICKEL OVER
 0.00127[.000050] MIN. NICKEL.
 ON LEADS—
 0.00254[.000100] MIN. MATTE TIN OVER
 0.00127[.000050] MIN. NICKEL.
- ④ STIFFENER MATERIAL: ALUMINUM, ALLOY 6063, PER ASTM B 221.
- ⑤ STIFFENER FINISH: TRIVALENT CONVERSION COATING.
- ⑥ RECEPTACLE ASSEMBLY SOLDER LEADS ARE OFFSET .015 TOWARD THE LETTER KEY SOCKET END OF THE CAVITY CENTERLINE. THE PIN ASSEMBLY SOLDER LEADS ARE IN LINE WITH THE CAVITY CENTERLINE.
- ⑦ RECOMMENDED THREADED FASTENERS: MOUNTING LUG— #2 TRUSS HEAD MACHINE SCREW, TYPE I THRU II, FOR .175 MAX THICK MOUNTING LUG PER ANSI B18.6.3. STIFFENER— #2 PAN HEAD THREAD FORMING SCREW, TYPE AB OR BP, PER ANSI B18.6.4.



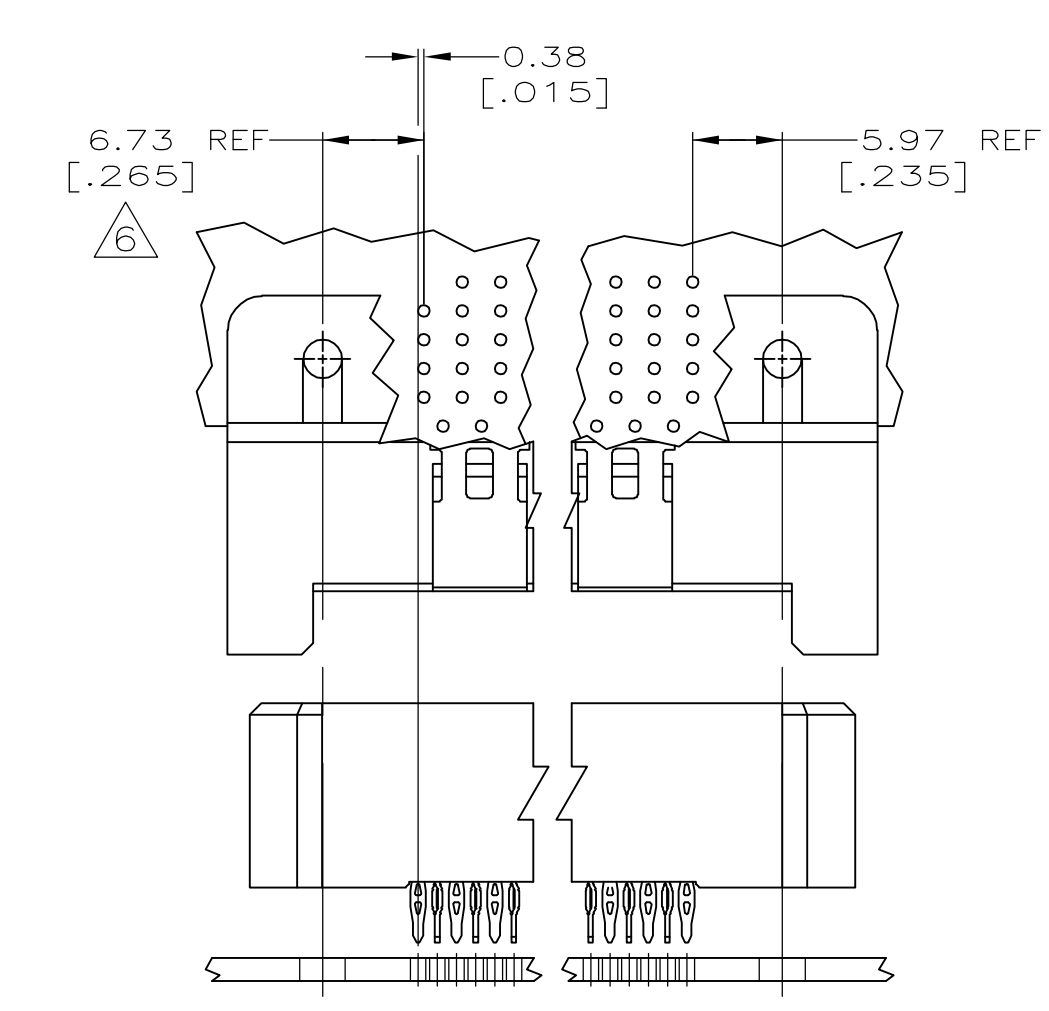
2	SIGNAL MODULE, 60 POSITION (LEFT END)	2
2	SIGNAL MODULE, 60 POSITION (RIGHT END)	1
QUANTITY	DESCRIPTION	ITEM NO

5646258-1
 PART NUMBER

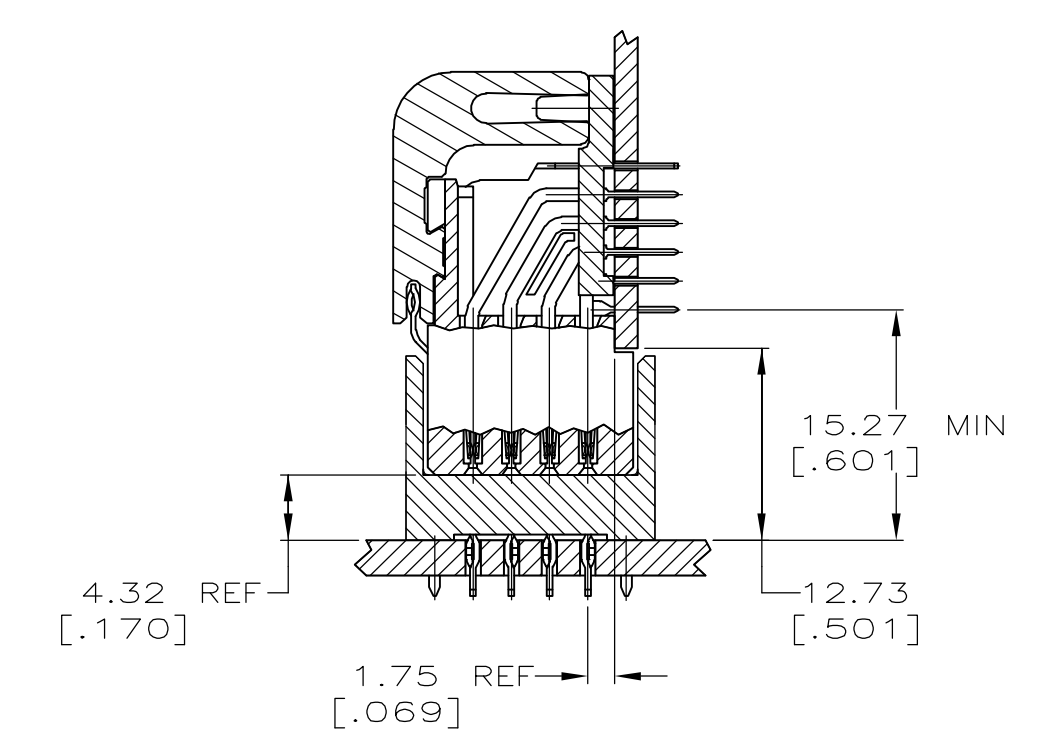
THIS DRAWING IS A CONTROLLED DOCUMENT.		DWN J. POLIGNONE 29JUL05		Tyco Electronics Corporation Harrisburg, Pa 17105-3608	
DIMENSIONS: mm [INCHES]		CHK G. GRIFFITH 29JUL05		NAME G. GRIFFITH 29JUL05	Z-PACK Stripline 100 MODULAR RECEPTACLE ASSEMBLY 4.19 [.165] LEAD LENGTH
TOLERANCES UNLESS OTHERWISE SPECIFIED:		PRODUCT SPEC 108-1244		APPLICATION SPEC 114-1065	
0 PLC ± - 1 PLC ± - 2 PLC ± 0.51 [.02] 3 PLC ± 0.25 [.010] 4 PLC ± - ANGLES ± - FINISH		RESTRICTED TO		SIZE CAGE CODE DRAWING NO. 114-1065	
MATERIAL		WEIGHT -		A1 00779 ©=5646258	
① ② ③ ④		③ ⑤		CUSTOMER DRAWING SCALE 2:1 SHEET 1 OF 2 REV 0	



RECOMMENDED CIRCUIT PATTERN Δ



REFERENCE - THRU HOLE OFFSET
SCALE 2:1



MATED CROSS SECTION
SCALE 2:1

THIS DRAWING IS A CONTROLLED DOCUMENT.		DWN J. POLIGNONE 29JUL05		Tyco Electronics Corporation Harrisburg, Pa 17105-3608	
DIMENSIONS: mm [INCHES]		CHK G. GRIFFITH 29JUL05		APPRO G. GRIFFITH 29JUL05	NAME Z-PACK Stripline 100 MODULAR RECEPTACLE ASSEMBLY 4.19 [0.165] LEAD LENGTH
TOLERANCES UNLESS OTHERWISE SPECIFIED:		PRODUCT SPEC 108-1244		APPLICATION SPEC 114-1065	SIZE A1
0 PLC ± - 1 PLC ± - 2 PLC ± 0.51 [0.02] 3 PLC ± 0.25 [0.010] 4 PLC ± - ANGLES ± - FINISH		DRAWING NO 00779		CAGE CODE 5646258	SCALE 2:1
MATERIAL 1 2 4		WEIGHT -		CUSTOMER DRAWING	SHEET 2 OF 2