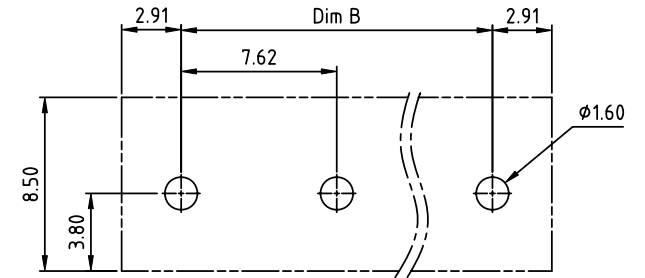
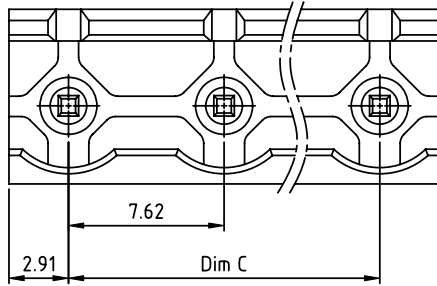
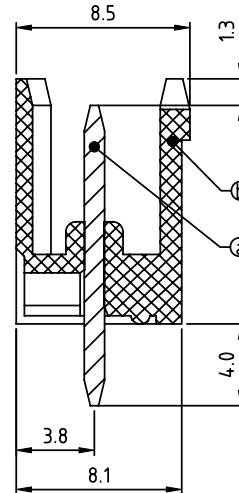
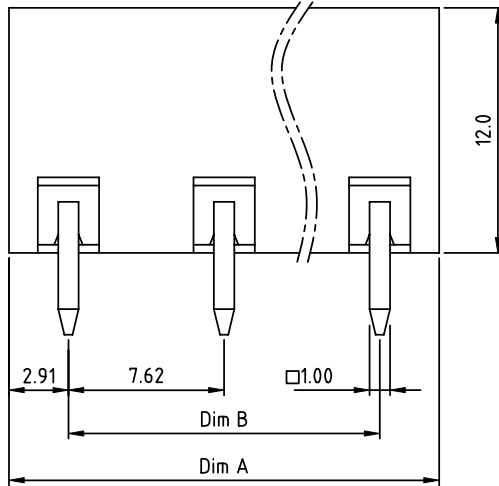


PRODUCT NUMBER	PITCH
OQxx00x000J0G	7.62 mm



RECOMMENDED P.C.B LAYOUT
TOP VIEW



Material:

- Item ③ Male contact pin: Copper Tin plated
 - Item ④ Terminal housing: Thermoplastic (UL94V-0)
- Electrical: cULus TUV
- Voltage rating: 300V 750V
 - Current rating: 20A 15A
 - Withstanding Voltage: 1.6 KV 6KV
 - Operating temperature: -40°C to +115°C
 - Soldering temperature: 260°C±5°C/5 Sec
 - Safety Approval:

DIMENSION

Dim A	(N-1)X7.62+5.82
Dim B&C	(N-1)X7.62

N= NUMBER OF POLES

Poles	Tolerance
2P-6P	±0.20
7P-12P	±0.30
13P-16P	±0.40

PART NO.: OQ xx 0 0 x 0 00J0 G

No. of poles	0 Black (RAL9005)	RoHS compliant (lead<4%) In copper Alloy
02 2 poles	2 Red (RAL3001/D)	
03 3 poles	3 Orange(RAL2011/P)	
... ..	4 Yellow(RAL1018/A)	
16 16 poles	5 Green(RAL6018/T)	
	6 Blue (RAL5015/A)	
	8 Grey(RAL7035/D)	
	9 White(RAL1102)	
	C Green(RAL6018/U)	

mat'l. code		surface ASME Y14.5	tolerance ASME Y14.5	projection	product family TERMINAL BLOCK
ltr	ecn no	dr	date		title
				MM	TERMINAL BLOCK
				scale	PLUGGABLE SOCKET,OPEN,VERTICAL
		dr	HANKE FENG 040414		dwg no
		enr	HANKE FENG 040414		sheet 1 of 1
		chr	SHI JUN 040414		size
		appd	SHI JUN 040414		A4
sheet index	revision	A			type
	sheet	1			CUSTOMER Drawing