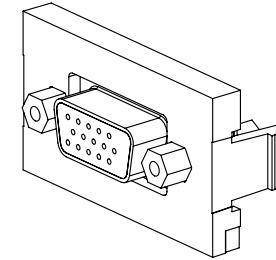
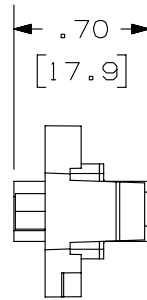
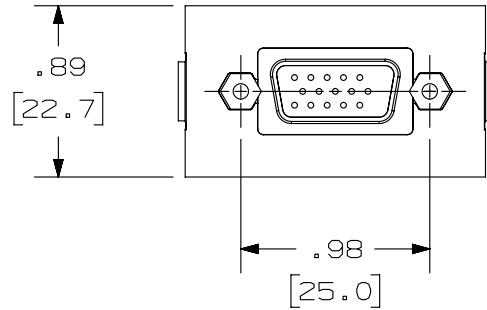
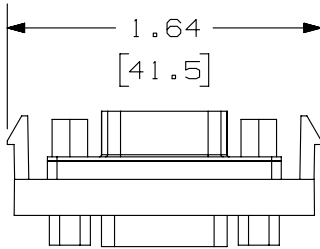


THIS COPY IS PROVIDED ON A RESTRICTED BASIS AND IS NOT TO BE USED IN ANY WAY DETRIMENTAL TO THE INTERESTS OF PANDUIT CORP.

	PANDUIT P/N	WEIGHT
△A	CHD15HDC**	.28 LB/10 PCS (125.9 g/10 PCS)
△B	IAPHD15HDCWH	

NOTES:

1. SEE CURRENT CATALOG FOR ADDITIONAL PART NUMBER SUFFIXES TO INDICATE COLOR AND OR PACKAGE QUANTITY.
2. SEE CATALOG FOR COMPLETE LIST OF PARTS APPLICABLE FOR USE WITH THIS PART.
3. DIMENSIONS IN PARENTHESES ARE IN METRIC.
4. PART TO WORK WITH ALL PANDUIT FACEPLATE FRAMES.



PART NUMBER		SEE TABLE	
TITLE			
△C 15 PIN HIGH DENSITY SVGA 1/3 INSERT COUPLER			
CUSTOMER DRAWING			
ITEM REVISION NAME		M01095AB/02	
DATASET FILE NAME		M01095AB_DC07/02C	
UNLESS OTHERWISE SPECIFIED, DIMENSIONAL TOLERANCES ARE: IN [mm]		MATERIAL:	
.x ± .xxx ± .010 [.3]		DRAWING NUMBER:	
.xx ± .03 [.8] ANGES ±		01095-07 △D	
THIRD ANGLE PROJECTION		SHT 1 OF 1	
DRAWN BY	DATE	CHK	SCALE
JSP	1-26-01	PBD	NONE
REV	DATE	BY	CHK
3	7-31-14	BJN	JSP
2	6-6-11	BJN	JSP
1	2-16-01	JSP	PBD
R	1-26-01	JSP	PBD
DESCRIPTION		ECN	
C. REMOVED "MINI-COM" FROM TITLE D. UPDATD TITLE BLOCK		01095-07	
B. ADDED SUPPLEMENTAL P/N IAPHD9CWH		01095-07	
A. ADDED "C" TO PART NO.		01095-07	
RELEASED TO PRODUCTION		01095-07	

D10100DA/14

2

1

2

1