

PRODUCT NUMBER	PITCH
KDxx30x200J0G	3.81 mm

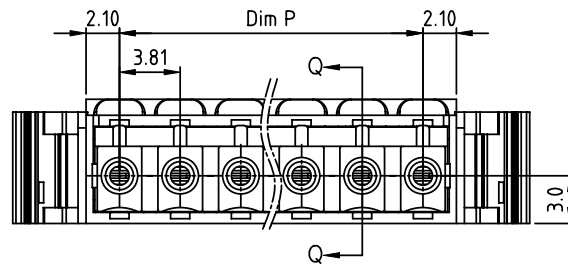
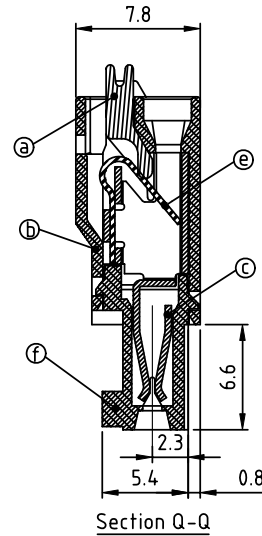
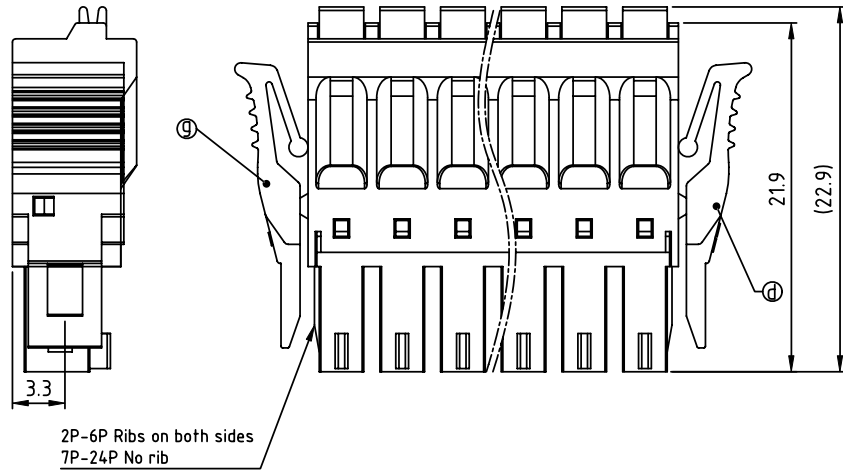
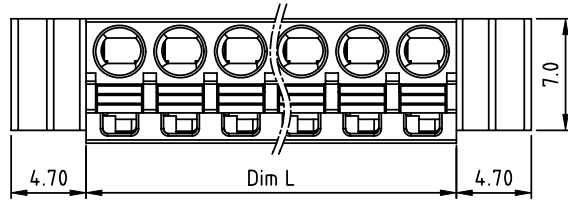
Dim L=N×3.81+0.39
Dim P=(N-1)×3.81

N=Number of poles

POLES	Dim P	Dim L
2p-6p	±0.15	±0.15
7p-12p	±0.20	±0.25
13p-16p	±0.25	±0.30
17p-24p	±0.30	±0.40

PART NO.: KD xx 3 0 x 2 00J0 G

	Color	RoHS compliant
Solid block	0 Black (RAL9005)	(lead<4%)
No. of poles	2 Red (RAL3001/D)	In copper Alloy
02 2 poles	3 Orange(RAL2011/P)	
03 3 poles	4 Yellow(RAL1018/A)	
...	5 Green(RAL6018/T)	
24 24 poles	6 Blue (RAL5015/A)	
	8 Grey(RAL7035/D)	
	9 White(RAL1102)	
	C Green(RAL6018/U)	



Material:

- ItemⒶ Terminal lever: Thermoplastic (UL94V-0) Orange (RAL2001/P)
- ItemⒷ Top body: Thermoplastic (UL94V-0)
- ItemⒸ Female Contact: PhBz Tin Plated
- ItemⒹ Terminal Right Latch: Thermoplastic (UL94V-0)
- ItemⒺ Spring clamp: Stainless steel
- ItemⒻ Bottom body: Thermoplastic (UL94V-0)
- ItemⒼ Terminal Left Latch: Thermoplastic (UL94V-0)

- Electrical: cULus
- Voltage rating: 300 V
 - Current rating: 5.5A
 - Wire range:
 - Solid wire(AWG): 16-24
 - Stranded wire(AWG): 16-24
 - Wire strip length: 9-10 mm
 - Withstanding Voltage: 1.6 KV
 - Operating temperature: -40°C to +115°C
 - Safety Approval:

mat'l. code		surface ASME Y14.5	tolerance ASME Y14.5	projection 	product family TERMINAL BLOCK
ltr ecn no dr date		tolerances unless otherwise specified		MM	title TERMINAL BLOCK SPRING CLAMP, PLUGGABLE PLUG, WITH LATCH
		angles X°±1°	X.±0.5 X.X±0.3 X.XX±0.1		
dr		EVIN ZHONG	052014		dwg no KDxx30x200J0G
enr		EVIN ZHONG	052014		sheet 1 of 1
chr		HANKE FENG	052014		size A4
appd		SHI JUN	052014		type CUSTOMER Drawing
sheet index	revision sheet	A	1		