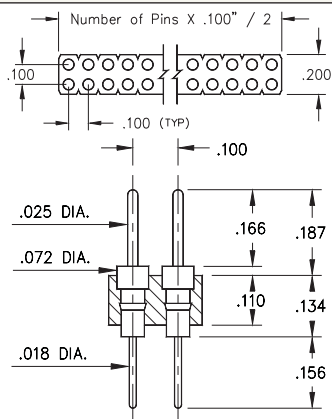
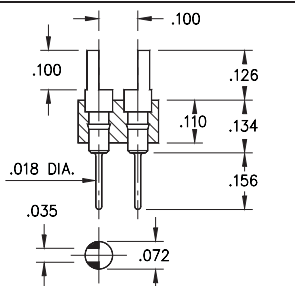


# INTERCONNECTS

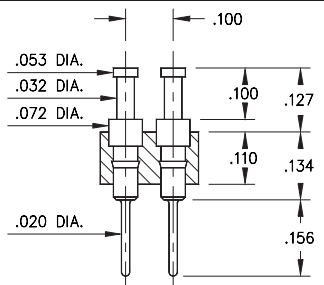
## SERIES 450, 460, 470, 480 • .100" GRID SOLDER TAIL • DOUBLE ROW STRIPS



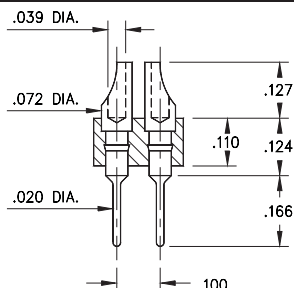
**FIG. 1**



**FIG. 2**



**FIG. 3**



**FIG. 4**

- Series 450, 460, 470 & 480 double row header strips come in various styles (pin, slotted, head, turret and solder cup) with pluggable solder tails

450...001 uses pin #0290

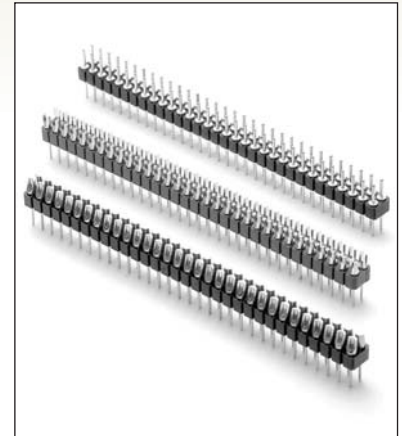
460...001 uses pin #0282

470...001 uses pin #0700

480...001 uses pin #8000

See pages 215 and 216 for details

- Insulators are high temperature thermoplastic, suitable for all soldering operations



### ORDERING INFORMATION

<b>FIG. 1</b>	<b>Series 450...001</b> <b>.025" / .018" Dia. Solder Tails</b>
	450-XX-2--00-001000 Specify number of pins ↑ 04-64
<b>FIG. 2</b>	<b>Series 460...001</b> <b>Slotted Head / Solder Tail</b>
	460-10-2--00-001000 Specify number of pins ↑ 02-64
<b>FIG. 3</b>	<b>Series 470...001</b> <b>Turret / Solder Tail</b>
	470-XX-2--00-001000 Specify number of pins ↑ 04-64
<b>FIG. 4</b>	<b>Series 480...001</b> <b>Solder Cup / Solder Tail</b>
	480-10-2--00-001000 Specify number of pins ↑ 02-64



XX=Plating Code  
See Below

For  
Electrical, Mechanical  
& Environmental Data,  
See page 264

<b>SPECIFY PLATING CODE XX=</b>	10 ◆	90	40 ◆	
Pin Plating	10 μ" Au	200 μ" Sn/Pb	200 μ" Sn	

