

PART NUMBER	ITEM ① BODY	ITEM ② CONTACT	ITEM ③ INSULATOR	ITEM ④ INSULATOR	PACKAGING
133-3711-301	BRASS GOLD PL .00001 MIN OVER NICKEL PL .00005 MIN OVER COPPER PL .00005 MIN	BERYLLIUM COPPER GOLD PL .00003 MIN OVER NICKEL PL .00005 MIN OVER COPPER PL .00005 MIN	TEFLON	TEFLON	BULK PACK 25 PCS.
133-3711-302	BRASS GOLD PL .00001 MIN OVER NICKEL PL .00005 MIN OVER COPPER PL .00005 MIN	BERYLLIUM COPPER GOLD PL .00003 MIN OVER NICKEL PL .00005 MIN OVER COPPER PL .00005 MIN	TEFLON	TEFLON	TAPE AND REEL 750 PCS. PER FIG 1
133-3711-303	BRASS GOLD PL .00001 MIN OVER NICKEL PL .00005 MIN OVER COPPER PL .00005 MIN	BERYLLIUM COPPER GOLD PL .00003 MIN OVER NICKEL PL .00005 MIN OVER COPPER PL .00005 MIN	TEFLON	TEFLON	NONE
133-3711-307	BRASS TIN PL .00015 MIN OVER NICKEL PL .00003 MIN OVER COPPER PL .00003 MIN	BERYLLIUM COPPER GOLD PL .00003 MIN OVER NICKEL PL .00005 MIN OVER COPPER PL .00005 MIN	TEFLON	TEFLON	BULK PACK 25 PCS.
133-3711-308	BRASS TIN PL .00015 MIN OVER NICKEL PL .00003 MIN OVER COPPER PL .00003 MIN	BERYLLIUM COPPER GOLD PL .00003 MIN OVER NICKEL PL .00005 MIN OVER COPPER PL .00005 MIN	TEFLON	TEFLON	TAPE AND REEL 750 PCS. PER FIG 1
133-3711-309	BRASS TIN PL .00015 MIN OVER NICKEL PL .00003 MIN OVER COPPER PL .00003 MIN	BERYLLIUM COPPER GOLD PL .00003 MIN OVER NICKEL PL .00005 MIN OVER COPPER PL .00005 MIN	TEFLON	TEFLON	NONE

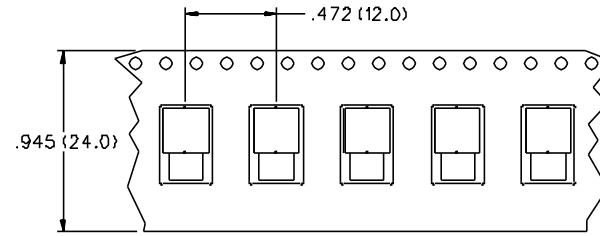
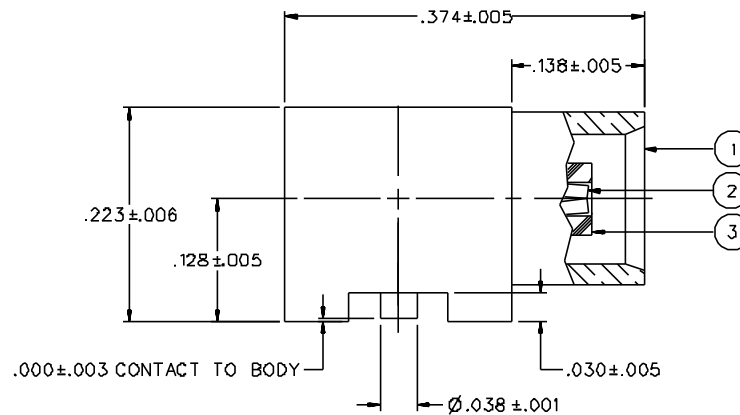


FIG 1

2:1



.000±.003 CONTACT TO BODY

NOTES:

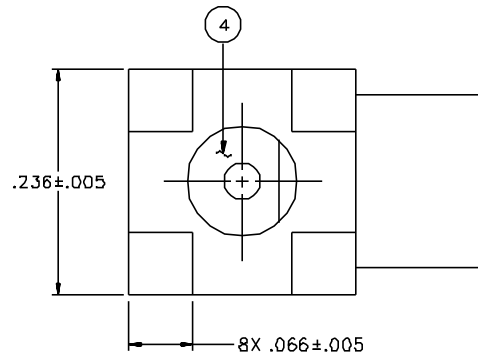
1. SPECIFICATIONS:

- IMPEDANCE: 50 OHMS
- FREQUENCY RANGE: 0-6 GHz
- VSWR: NOT APPLICABLE
- WORKING VOLTAGE: 335 VRMS MAX AT SEA LEVEL
- DIELECTRIC WITHSTANDING VOLTAGE: 1000 VRMS MIN AT SEA LEVEL
- INSULATION RESISTANCE: 10000 MEGOHM MIN
- CONTACT RESISTANCE:
 - CENTER CONTACT - INITIAL 5 MILLIOHM MAX, AFTER ENVIRONMENTAL 8 MILLIOHM MAX
 - OUTER CONDUCTOR - GOLD PLATED INITIAL 1 MILLIOHM MAX, AFTER ENVIRONMENTAL 1.5 MILLIOHM MAX
 - NICKEL PLATED INITIAL 2.5 MILLIOHM MAX, AFTER ENVIRONMENTAL 3.5 MILLIOHM MAX
- BRAID TO BODY - NOT APPLICABLE
- CORONA LEVEL: 250 VOLTS MINIMUM AT 70,000 FEET
- INSERTION LOSS: NOT APPLICABLE
- RF LEAKAGE: NOT APPLICABLE
- RF HIGH POTENTIAL WITHSTANDING VOLTAGE: 600 VRMS AT 4 AND 7 MHZ

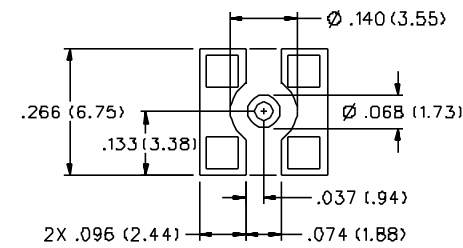
- MECHANICAL:
- ENGAGE/DISENGAGE FORCE: 5.6 LBS MAX ENGAGEMENT, 1.0 LB MIN DISENGAGEMENT, 8.0 LBS MAX DISENGAGEMENT
 - CONTACT RETENTION FORCE: NOT APPLICABLE
 - CONTACT RETENTION TORQUE: NOT APPLICABLE
 - COUPLING MECHANISM RETENTION: NOT APPLICABLE
 - CABLE ACCEPTABILITY: NOT APPLICABLE
 - CABLE HEX CRIMP SIZE: NOT APPLICABLE
 - CABLE RETENTION: NOT APPLICABLE
 - DURABILITY: 500 CYCLES MIN

ENVIRONMENTAL:

- {MEETS OR EXCEEDS THE APPLICABLE PARAGRAPH OF MIL-C-38012}
- THERMAL SHOCK: MIL-STD-202, METHOD 107, CONDITION F
- OPERATING TEMPERATURE: -65 DEG C TO 165 DEG C
- CORROSION: MIL-STD-202, METHOD 101, CONDITION B
- SHOCK: MIL-STD-202, METHOD 213, CONDITION B
- VIBRATION: MIL-STD-202, METHOD 204, CONDITION B
- MOISTURE: MIL-STD-202, METHOD 106



RECOMMENDED SOLDER LAND PATTERN*



- * NOTE: THIS PATTERN IS FOR REFERENCE ONLY. PATTERN MAY VARY DEPENDING ON ASSEMBLY PROCESS, BOARD TYPE, OR SPECIFIC ELECTRICAL OR MECHANICAL REQUIREMENTS.

DRAWING NO.
C - 133-3711-301/310

REVISIONS	
0	REVISIONS
ENGINEERING RELEASE	
1	8-23-95 R H B A B B B-29-95 ECN 43666
CHANGED: -307 ITEM 1 BODY TIN PL .00015 MIN OVER NICKEL PL .00003 MIN OVER COPPER PL .00003 MIN WAS TIN PL .0002 MIN OVER NICKEL PL .00015 MIN OVER COPPER PL .00015 MIN	
1a	12-5-95 R S A T R P 12-8-95 ECN 43786
ADDED: TAPE AND REEL PARTS -302 & -308, FIG 1	
1b	1-22-96 R S A T R P 1-29-96 ECN 43861
CHANGED: 750 PCS WAS 500 PCS	
1c	12-1-98 R H B A B B 12-4-98 ECN 46031
CHANGED: .000+- .003 WAS .003 +/- .006	
2	4-21-99 R H B A B B ECN 46293
CHANGED: .374-.005 WAS .374-.010 .223-.006 WAS .223-.015 .128+- .005 WAS .128+.010 3.0 LBS TYPICAL DISENGAGEMENT 1.0 LB MIN WAS 5 LBS TYPICAL DISENGAGEMENT	
2a	2-14-00 R H B A B B 2-29-00 ECN 46980
ADDED: P/N'S 133-3711-303 AND 133-3711-309	
* REVISION NUMBER FOLLOWED BY AN ALPHA *	
* CHARACTER INDICATES DRAWING CLAR. *	
* CAUTION ON PART NUMBER ADDITION ONLY. *	
2b	10-02-01 R H B A B B ECN 47897
UPDATED 'D' FLAT INSULATOR	
3	9-11-01 R H B A B B ECN 48025

CUSTOMER DRAWING

THIS DRAWING TO BE INTERPRETED PER ANSI Y 14.5M - 1982

"µSTATION"

COMPANY CONFIDENTIAL

TOLERANCE UNLESS OTHERWISE SPECIFIED	DRAWN BY	DATE	JOHNSON [®] CinCh Connectivity Solutions 299 Johnson Ave. Ste. 100 Waverly, MN 56093 1-800-247-8256	
DECIMALS	SWC	7-28-95	TITLE JACK ASSEMBLY RA SURFACE MOUNT MCX	
.XX _____ mm	CHECKED BY	DATE	CODE NO.	DRAWING NO.
.XXX _____	SWC	8-23-95	C - 133-3711-301/310	SCALE 10:1 U/W INCH SHEET 2 OF 2
MATL _____	APPROVED BY	DATE		
FINISH _____	TAK	8-24-95		
	RJB	8-24-95		
	RELEASE DATE	8-29-95		