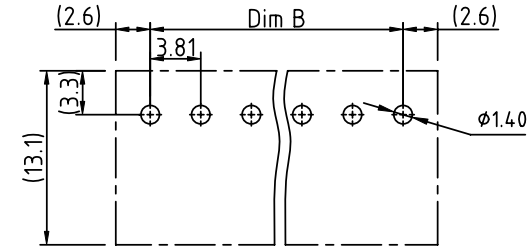
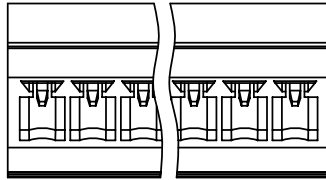
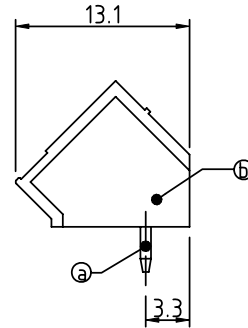
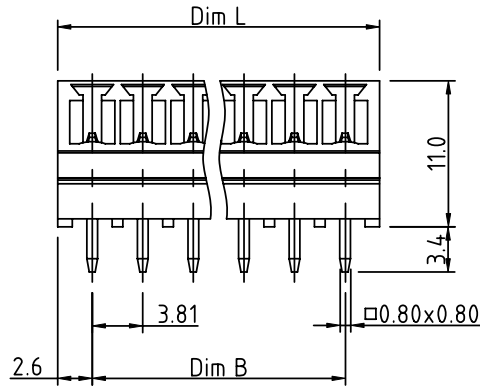


PRODUCT NUMBER	PITCH
VKxx31x000J0G	3.81 mm



RECOMMENDED P.C.B LAYOUT
TOP VIEW



Material:

- Item (a) Male contact pin: Copper Tin plated
- Item (b) Terminal (housing): Thermoplastic (UL94V-0)

Electrical:

- Voltage rating: 300V/300V
- Current rating: 8A/10A
- Withstanding Voltage: 1.6 KV/2.5KV
- Operating temperature: -40°C to +115°C
- Soldering temperature: 260°C±5°C/5 Sec
- Safety Approval:

PART NO.: VK xx 31 x 0 00J0 G

Dim L = (N-1) x 3.81+5.2
Dim B = (N-1) x 3.81
N= number of poles

Poles	Tolerance
2-6p	±0.15
7-12p	±0.20
13-18p	±0.25
19-24p	±0.30

Solid block	No. of poles	Color	RoHS compliant
0	2	Black (RAL9005)	(lead<4%) In copper Alloy
02	3	Red (RAL3001/D)	
03	4	Orange(RAL2011/P)	
...	5	Yellow(RAL1018/A)	
...	6	Green(RAL6018/T)	
24	8	Blue (RAL5015/A)	
	9	Grey(RAL7035/D)	
	9	White(RAL1102)	
	6	Green(RAL6018/U)	

mat'l. code		surface ASME Y14.5	tolerance ASME Y14.5	projection 	product family TERMINAL BLOCK
ltr	ecn no	dr	date	tolerances unless otherwise specified	title TERMINAL BLOCK
				angles 	PLUGGABLE SOCKET, 45DEGREE INLET, WITHOUT FLANGE
				X°±1'	scale MM
				dr	scale mm
				enr	dwg no
				chr	sheet 1 of 1 size
				appd	VKxx31x000J0G
					A4
					type
					CUSTOMER Drawing
sheet index	revision	A			
	sheet	1			