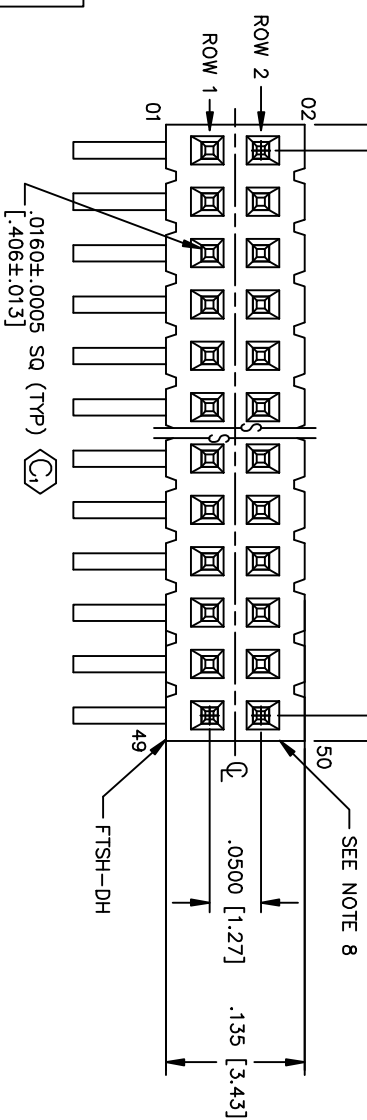


REV. Q

(No OF POS x .0500 [1.270]) ± .008 [.20]
 .0250 [.635] →
 No OF POS x .0500 [1.270] - .0500 [1.270]
 (TOL ACCUM ±.003 [.08] OVER 50 POSITIONS)

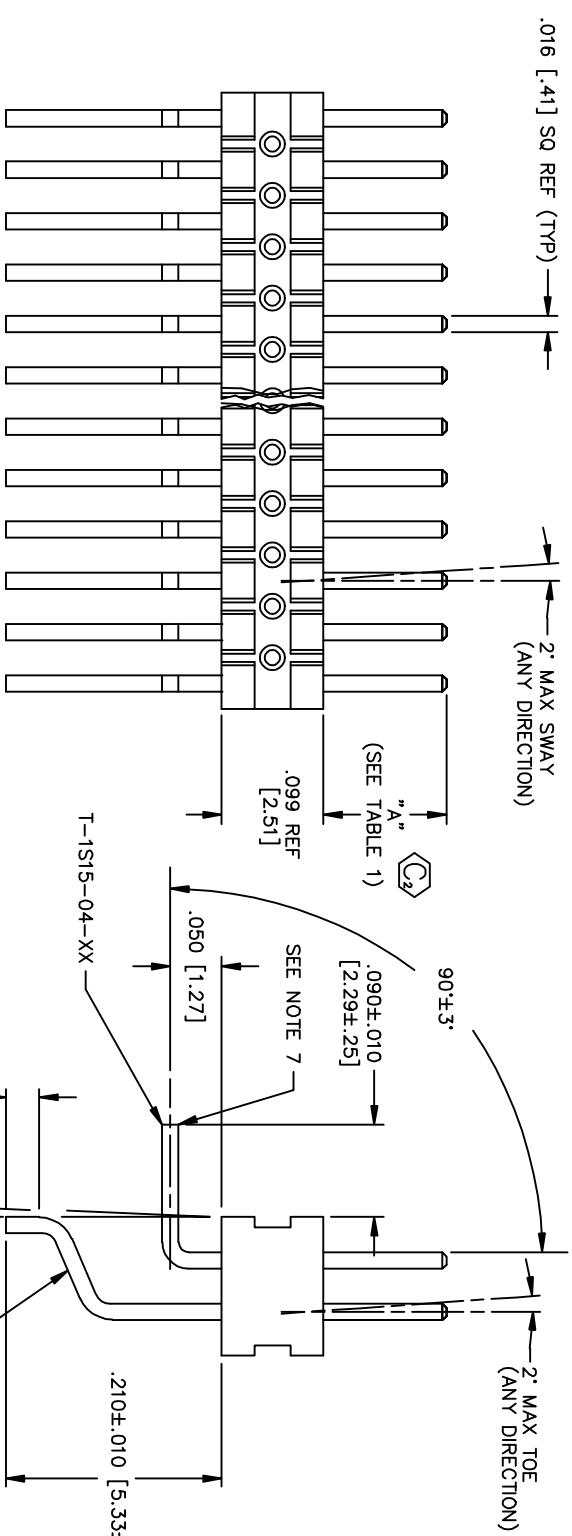


DO NOT SCALE
 FROM THIS PRINT

DIMENSIONS ARE IN INCHES
 UNLESS OTHERWISE NOTED
 TOLERANCES ARE:
 ONE PLACE DECIMALS ± .1 [2.54]
 TWO PLACE DECIMALS ± .01 [25]
 THREE PLACE DECIMALS ± .005 [13]
 FOUR PLACE DECIMALS ± .0010 [25]

TITLE:
 .050 x .050 DUAL
 TERMINAL ASSEMBLY
 MIXED TECHNOLOGY
 DWG NO:
 FTSH-1XX-XX-XX-MT-XX
 SHEET 1 OF 1

FTSH-1XX-XX-XX-MT-XX
 No OF POS. PER ROW
 -02 THRU -50
 (SEE NOTE 2 & 5)
 LEAD STYLE
 -01: "A" = .120 [3.05]
 -02: "A" = .075 [1.91]
 -04: "A" = .150 [3.81]
 (SEE TABLE 1 FOR
 TERMINAL USAGE)
 PLATING
 -L: LIGHT SELECTIVE
 (USE T-1S15-04-L & T-1S15-03-L)
 -F: FLASH SELECTIVE
 (USE T-1S15-04-F & T-1S15-03-F)
 -S: SELECTIVE GOLD
 (USE T-1S15-04-S & T-1S15-03-S)
 -H: HEAVY GOLD
 (USE T-1S15-04-H & T-1S15-03-H)
 -SM: HEAVY SELECTIVE GOLD/MATTE TIN TAIL
 (USE T-1S15-04-S & T-1S15-03-S)
 -LM: LIGHT SELECTIVE GOLD, MATTE TIN TAIL
 (USE T-1S15-04-L & T-1S15-03-L)
 -FM: FLASH SELECTIVE GOLD, MATTE TIN TAIL
 (USE T-1S15-04-F & T-1S15-03-F)
 -TM: MATTE TIN (USE T-1S15-04-T & T-1S15-03-T)

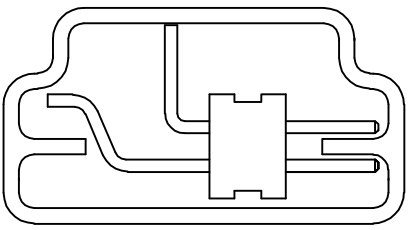


- NOTES:
1. TERMINALS TO BE SHEARED TO MEET DIMENSION SPECIFICATION.
 2. PARTS MAY BE CUT TO POSITION.
 3. MINIMUM PUSHOUT FORCE: .5 LB.
 4. MAXIMUM TOP / BOTTOM BOW: .004 [.10].
 5. SEE PACKAGING TABLE 2.
 6. ⊕ REPRESENTS A CRITICAL DIMENSION
 7. .002 MAX BURR ALLOWED.
 8. .015 MAX CUT FLASH ALLOWED.
 9. PINS 2 TO BE FLUSH TO .003 ABOVE OR BELOW LINE MADE BY BODY.

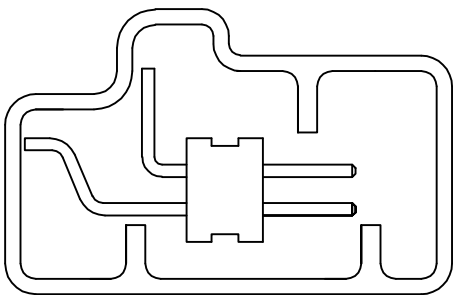
TABLE 1		
LEAD STYLE	ROW 1	ROW 2
-01	T-1S15-04-XX	T-1S15-03-XX
-02	T-1S15-04-XX	T-1S15-03-XX
-04	T-1S15-04-XX	T-1S15-03-XX

TABLE 2		
LEAD STYLE	NO. OF POS	PACKAGING
-01	-02 THRU -04	TAPE & REEL
-01	-05 THRU -50	PT-1-24-07-15
-02	-02 THRU -05	TAPE & REEL
-02	-06 THRU -50	PT-1-24-07-15
-04	-02 THRU -03	TAPE & REEL
-04	-04 THRU -50	PT-MM1001-DH-P

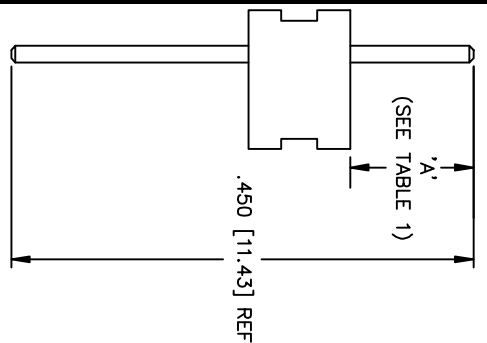
PT-1-24-07-15
 (-01, -02 LEAD STYLE)
 TUBE TO USE (2) TP-03



PT-MM1001-DH-P
 (-04 LEAD STYLE)
 TUBE TO USE (2) TP-09

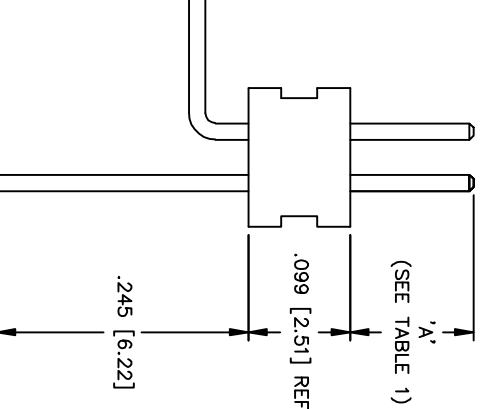


IN-PROCESS 1



IN-PROCESS 2

IN-PROCESS 3



PLOT SCALE: 1=1.3125 / DIM SCALE: 1=1.100

samtec

520 PARK EAST BLVD. NEW ALBANY, INDIANA 47150
 PHONE (812) 944-6733 P.O. BOX 1147
 CODE 55322

MADE BY: PURVIS 07-29-96 FTSH-1XX-XX-XX-MT-XX
 SHEET 1 OF 1

PROPRIETARY NOTE
 THIS DOCUMENT CONTAINS INFORMATION
 CONFIDENTIAL AND PROPRIETARY TO
 SAMTEC INC. AND SHALL NOT BE
 REPRODUCED, COPIED, DISCLOSED,
 OR USED FOR ANY PURPOSE
 OTHER THAN THAT FOR WHICH IT WAS
 WRITTEN WITHOUT THE EXPRESSED
 WRITTEN CONSENT OF SAMTEC INC.