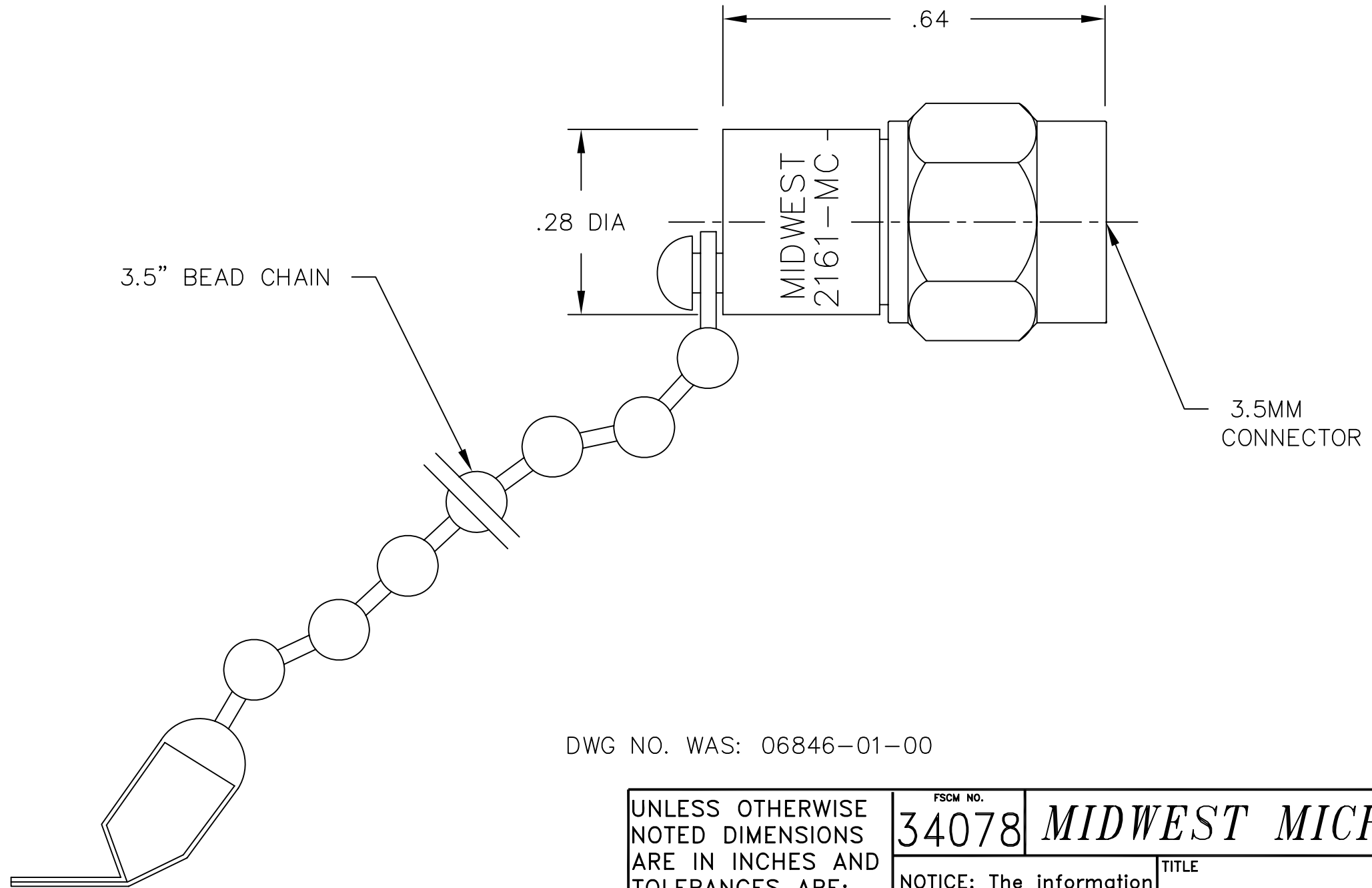


NOTES:

1.0 ELECTRICAL SPECIFICATIONS:

- 1.1 FREQUENCY RANGE: DC to 18.0 GHz
- 1.2 VSWR (MAX): 1.12:1
- 1.3 MAXIMUM INPUT POWER: 2 WATTS AT +25°C DERATED LINEARLY TO 1 WATT AT +125°C.
- 1.4 OPERATING TEMP. RANGE: -65°C to +125°C

2.0 MARKING (MARK UNIT AS SHOWN):



DWG NO. WAS: 06846-01-00

REV.	DESCRIPTION	DATE
-	RELEASED	8/12/92
A	ECR 4964	11/6/86
B	ECR 6545	8/1/89
C	ECR 6847	9/21/89
D	ECN 11948	8/7/92
E	ECN 12390	2/1/93
E1	ADDED TITLEBLOCK	11/9/05

UNLESS OTHERWISE NOTED DIMENSIONS ARE IN INCHES AND TOLERANCES ARE:		FSCM NO. 34078		MIDWEST MICROWAVE	
3 PLACE DECIMALS ±.005		NOTICE: The information contained in this drawing is proprietary and must not be used without the permission of Midwest Microwave		TITLE TERMINATION - 3.5MM PLUG	
2 PLACE DECIMALS ±.02					
FRACTIONS ±1/64					
PARALLELITY: T.I.R. _____					
FLATNESS: T.I.R. _____					
CONCENTRICITY: T.I.R. _____		DRAWN/DATE A.BEATTY 8/7/92	ENG./DATE G.KOZAK 8/7/92	DRAWING NUMBER TRM-2161-MC-35M-02	
ANGLES AND PERPENDICULARITY: ±1°		CHECKED/DATE M.HOLLMAN 8/7/92	APPROVED/DATE	SCALE: 5=1	SHEET 1 of 1

MODEL NUMBER
TRM-2161-MC-35M-02
REV.
E1