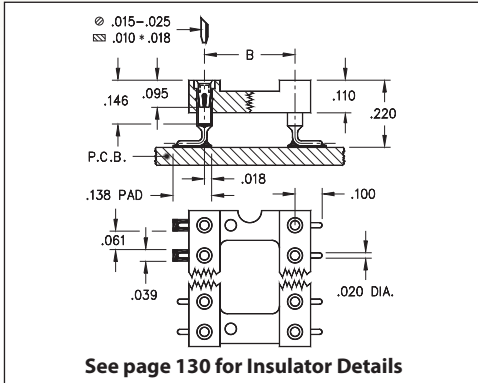
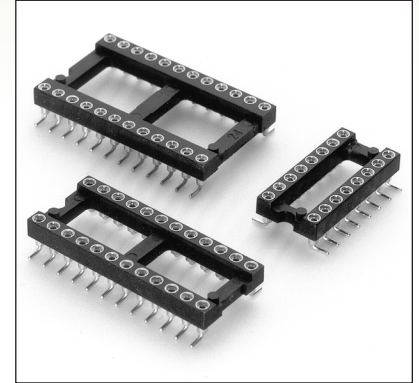


DUAL-IN-LINE SOCKETS

SERIES 110...105 • SURFACE MOUNT, GULL WING • OPEN FRAME



- Socket pins feature closed end construction eliminating any solder wicking problems
- Gull wing terminals provide maximum strength and permit easy visual inspection of solder joints. Series 110 uses Mill-Max #1005 pins. See page 166 for details
- Hi-Rel, 4-finger BeCu #30 contact is rated at 3 amps. See page 253 for details
- Insulators are high temperature thermoplastic, suitable for all soldering operations
- For Electrical, Mechanical and Environmental Data, see page 264 for details



Total number of pins	Pin Spacing Dimensions (mm)			Quantity per tube	ORDERING INFORMATION					
	A	B	C							
10	0.5	0.2	0.3	40	110-XX-210-41-105000 110-XX-304-41-105000 110-XX-306-41-105000 110-XX-308-41-105000 110-XX-310-41-105000 110-XX-314-41-105000 110-XX-316-41-105000 110-XX-318-41-105000 110-XX-320-41-105000 110-XX-322-41-105000 110-XX-324-41-105000 110-XX-328-41-105000 110-XX-420-41-105000 110-XX-422-41-105000 110-XX-424-41-105000 110-XX-428-41-105000 110-XX-432-41-105000 110-XX-624-41-105000 110-XX-628-41-105000 110-XX-632-41-105000 110-XX-636-41-105000 110-XX-640-41-105000 110-XX-642-41-105000 110-XX-648-41-105000 110-XX-650-41-105000 110-XX-652-41-105000 110-XX-950-41-105000 110-XX-952-41-105000 110-XX-964-41-105000					
4	0.2	0.3	0.4	102						
6	0.3	0.3	0.4	67						
8	0.4	0.3	0.4	50						
10	0.5	0.3	0.4	40						
14	0.7	0.3	0.4	28						
16	0.8	0.3	0.4	25						
18	0.9	0.3	0.4	22						
20	1.0	0.3	0.4	20						
22	1.1	0.3	0.4	18						
24	1.2	0.3	0.4	16						
28	1.4	0.3	0.4	14						
20	1.0	0.4	0.5	20						
22	1.1	0.4	0.5	18						
24	1.2	0.4	0.5	16						
28	1.4	0.4	0.5	14						
32	1.6	0.4	0.5	12						
24	1.2	0.6	0.7	16						
28	1.4	0.6	0.7	14						
32	1.6	0.6	0.7	12						
36	1.8	0.6	0.7	11						
40	2.0	0.6	0.7	10						
42	2.1	0.6	0.7	9						
48	2.4	0.6	0.7	8						
50	2.5	0.6	0.7	8						
52	2.6	0.6	0.7	7						
50	2.5	0.9	1.0	8						
52	2.6	0.9	1.0	7						
64	3.2	0.9	1.0	6						

XX=Plating Code See Below

RoHS-2 2011/65/EU

See page 264 for coplanarity information	SPECIFY PLATING CODE XX=		91	93			43
	Sleeve (Pin)		200 μ" Sn/Pb	200 μ" Sn/Pb			200 μ" Sn
	Contact (Clip)		10 μ" Au	30 μ" Au			30 μ" Au

