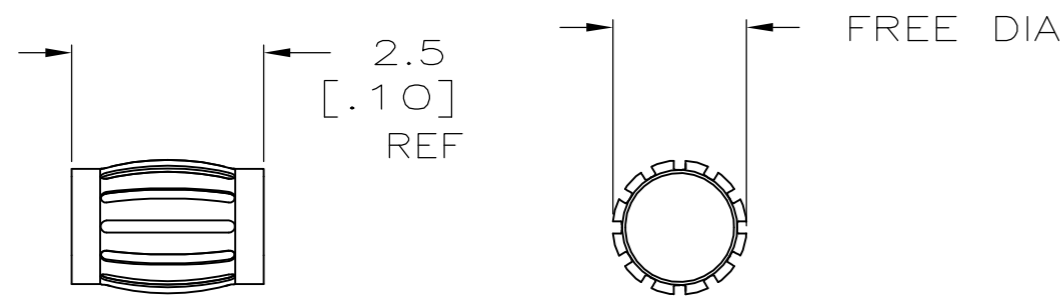
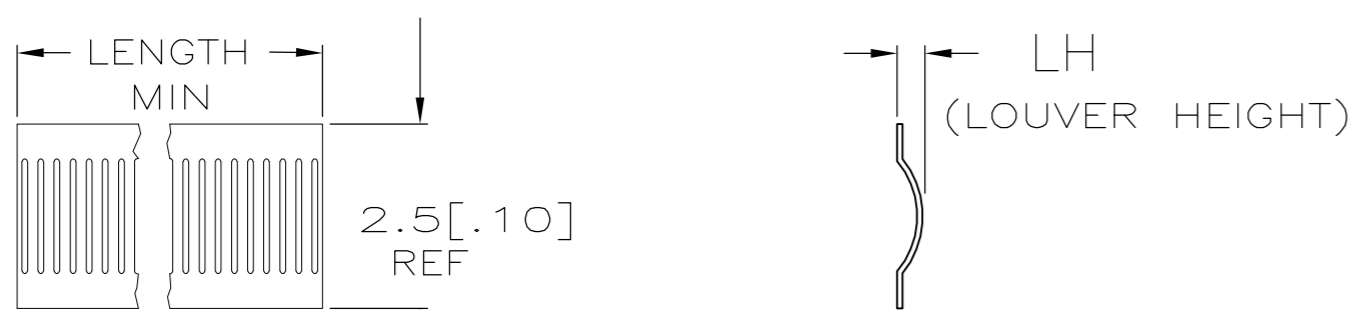


THIS DRAWING IS UNPUBLISHED. RELEASED FOR PUBLICATION
 © COPYRIGHT - By - ALL RIGHTS RESERVED.

LOC	DIST	REVISIONS			
P	LTR	DESCRIPTION	DATE	DWN	APVD
CH	11	H	REVISED PER ECO-15-011611	05NOV2015	NK MZ



STYLE B
(MALE)



STYLE C
(STRIP)

- ① FINISH—SILVER PLATE 200μIN THICK MIN.
- 2 FINISH—NICKEL PLATE 40μIN THICK MIN.
- 3 FINISH—GOLD PLATE 10μIN THICK MIN.
- 4 FINISH—GOLD PLATE 20μIN THICK MIN.
- 5 PLATING NOTES ARE TO BE INTERPRETED AS FOLLOWS, 3-2 AS 3 OVER 2.
- 6 PRODUCT IS SOLD BY THE FOOT.
- 7 72 INCH STRIP WOUND TO A ONE INCH INSIDE DIAMETER.
- 8 MATERIAL—BeCu (CDA172).
- ⑨ PRELIMINARY PART NUMBER
- ⑩ OBSOLETE PARTS: OBSOLETE CIS STREAMLINING PER D.RENAUD/D.SINISI

STYLE	FREE DIA	LENGTH	LH	MAT'L (NOTE)	MATING DIA REF	PLATING (NOTE)	NUM LOUV	MAT'L THK	REF	PART NO.
⑨	B [.375]	-- [.014]	8	9.5 [.375]	4-2	40	0.10 [.004]	--	2-192048-6	
⑩	B [.06]	-- [.012]	8	1.7 [.067]	1-2	5	0.10 [.004]	--	2-192048-5	
⑩	B [.20]	-- [.014]	--	--	3-2	20	0.10 [.004]	--	2-192048-4	
⑩	--	--	--	--	--	--	--	--	2-192048-3	
⑩	--	--	--	--	--	--	--	--	2-192048-2	
⑩	B [.06]	-- [.012]	8	--	UNPL	5	0.10 [.004]	--	2-192048-1	
⑩	C --	NOTE 6 [.014]	8	--	UNPL	--	0.10 [.004]	--	2-192048-0	
OBSOLETE	NOT AVAILABLE									
OBSOLETE	B [.65]	-- [.012]	8	16.6 [.655]	2	71	0.10 [.004]	06802	1-192048-9	
⑩	B [.65]	-- [.012]	8	16.6 [.655]	UNPL	71	0.10 [.004]	06050	1-192048-8	
OBSOLETE	NOT AVAILABLE									
OBSOLETE	B [.59]	-- [.012]	8	15.2 [.600]	UNPL	65	0.10 [.004]	06049	1-192048-7	
⑩	B [.28]	-- [.012]	8	7.3 [.288]	UNPL	30	0.10 [.004]	06036	1-192048-6	
⑩	B [.16]	-- [.012]	8	4.4 [.175]	3-2	17	0.10 [.004]	06030	1-192048-5	
⑩	B [.16]	-- [.012]	8	4.4 [.175]	UNPL	17	0.10 [.004]	06028	1-192048-4	
⑩	B [.13]	-- [.016]	8	3.2 [.127]	4-2	11	0.10 [.004]	06038	1-192048-3	
⑩	B [.13]	-- [.016]	8	3.2 [.127]	UNPL	11	0.10 [.004]	06039	1-192048-2	
⑩	B [.13]	-- [.016]	8	3.2 [.127]	UNPL	11	0.08 [.003]	06031	1-192048-1	
⑩	B [.13]	-- [.016]	8	3.2 [.127]	UNPL	11	0.08 [.003]	06034	1-192048-0	
⑩	B [.06]	-- [.012]	8	1.7 [.067]	4-2	5	0.10 [.004]	06072	192048-9	
⑩	B [.06]	-- [.012]	8	1.7 [.067]	UNPL	5	0.10 [.004]	06071	192048-8	
⑩	B [.05]	-- [.016]	8	1.3 [.051]	4-2	4	0.10 [.004]	06060	192048-7	
⑩	B [.05]	-- [.016]	8	1.3 [.051]	UNPL	4	0.10 [.004]	06058	192048-6	
⑩	B [.05]	-- [.016]	8	1.3 [.051]	UNPL	4	0.10 [.004]	06015	192048-5	
OBSOLETE	NOT AVAILABLE									
⑩	C --	NOTE 7 [.014]	8	--	4-2	--	0.10 [.004]	06059	192048-4	
⑩	C --	NOTE 6 [.014]	8	--	3-2	--	0.10 [.004]	06032	192048-3	
⑩	C --	NOTE 7 [.014]	8	--	UNPL	--	0.10 [.004]	06051	192048-2	
⑩	C --	NOTE 7 [.014]	8	--	UNPL	--	0.10 [.004]	06033	192048-1	

THIS DRAWING IS A CONTROLLED DOCUMENT. 06-12-92

DWN RA JAYNE
CHK --
APVD --
PRODUCT SPEC --
APPLICATION SPEC --

TE Connectivity
CONTACT BAND, MALE

SIZE A2 CAGE CODE 00779 DRAWING NO C=192048 RESTRICTED TO --
WEIGHT --
CUSTOMER DRAWING SCALE NTS SHEET 1 OF 1 REV H