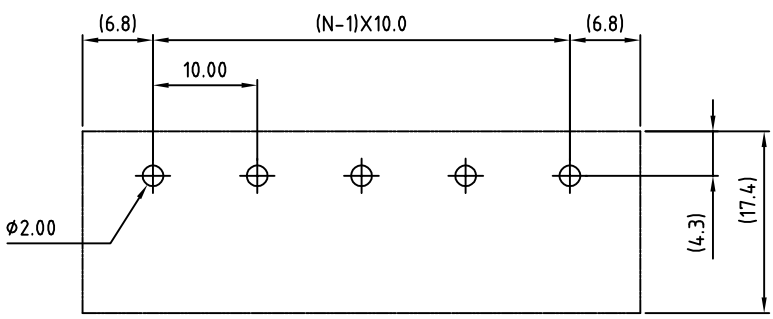
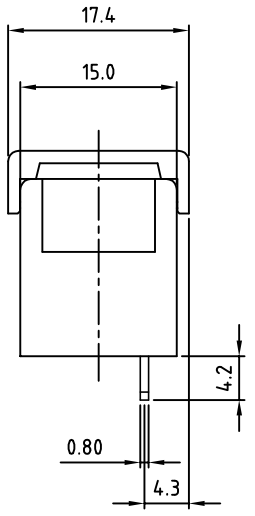


N=Number of poles



P.C.B LAYOUT



| SIGN | DATE | DESCRIPTION | APPROVER |
|------|------|-------------|----------|
| | | | |
| | | | |
| | | | |

THIS IS CAD DRAWING, DO NOT REVISE MANUALLY!!!

SPECIFICATIONS

VOLTAGE & CURRENT: 300 V, 20 A

WITHSTANDING VOLTAGE: AC 2000 V/Min

INSULATION RESISTANCE: 1000 MΩ OR MORE AT DC 500 V

TEMPERATURE RANGE: -40 °C ~ +105 °C

SCREW TORQUE VALUE: 12Lb-In.

WIRE RANGE: 22 - 12 AWG

1) MOLDED PARTS: THERMOPLASTIC, UL 94 V-0 BLACK

2) TERMINAL: BRASS, 0.8t, Tin PLATED

3) TERMINAL SCREWS: STEEL, Ni PLATED, M3.5

4) COVER MATERIAL: PC

APPROVAL: us

RoHS Compliant

PART NUMBER:
OSTYK604XX230

NO. OF POLES

02: 2 POLES
03: 3 POLES
04: 4 POLES
:
30: 30 POLES

THESE DRAWINGS AND SPECIFICATIONS ARE THE PROPERTY OF ON-SHORE TECHNOLOGY, INC. AND SHALL NOT BE REPRODUCED, COPIED OR USED IN ANY MANNER WITHOUT THE PRIOR WRITTEN CONSENT OF ON-SHORE TECHNOLOGY, INC.



| | | | | | | |
|-----------------------|----------------------|-----------------------------|-------------------|--------------|-------------|-------------------|
| TITLE | | OSTYK-604 W/O Flange Series | | | | |
| PART NO. | | OSTYK604XX230 | | DWG NO. | | OSTYK604XX230.DWG |
| APPROVED | CHECKED | DESIGNED | DRAWN | CUST NO. | Tolerance | |
| Shi Jun 2007.07.18 | Seamus 2007.07.18 | LUCY 2007.7.18 | LUCY 2007.7.18 | | UNIT: mm | X. ±0.50 |
| | | | | SHEET: 01/01 | SCALE: NONE | X.XX ±0.30 |
| | | | | | REV.:C | X° ±0.10 |
| | | | | | | X° ±1° |