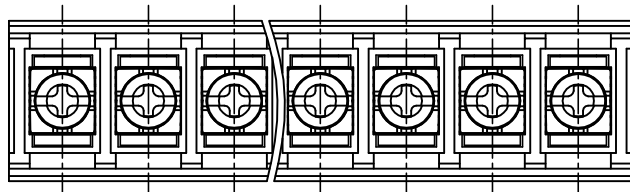

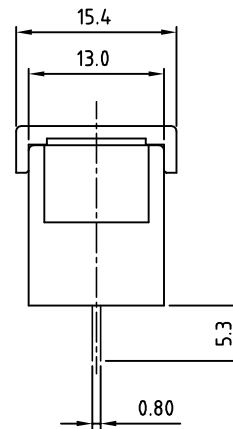
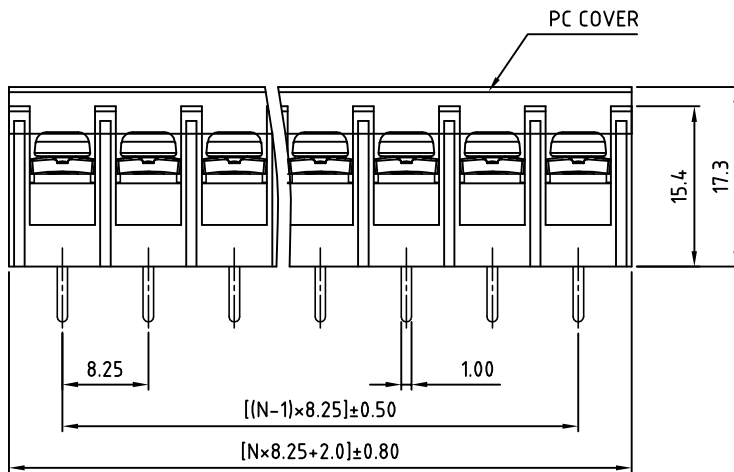


SIGN	DATE	DESCRIPTION	APPROVER

THIS IS CAD DRAWING, DO NOT REVISE MANUALLY!!!



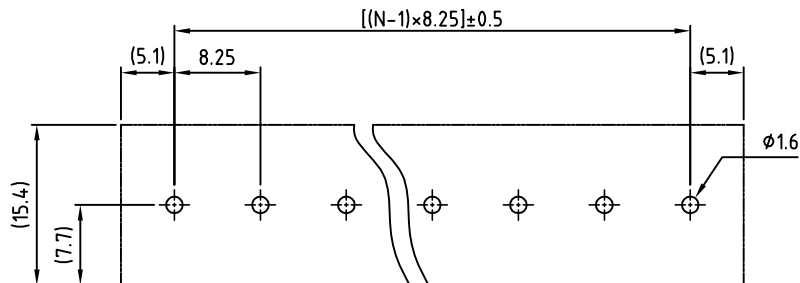
SPECIFICATIONS:
 RATED VOLTAGE & CURRENT: 300 V, 20 A
 WITHSTANDING VOLTAGE: AC 2000 V/Min
 INSULATION RESISTANCE: 1000 MΩ OR MORE AT DC 500 V
 OPERATING TEMPERATURE RANGE: -40 °C ~ +105 °C
 SCREW TORQUE VALUE: 7 Lb-In.
 WIRE RANGE: 22 - 12 AWG
 1) MOLDED PARTS: POLYIMIDE 66, UL 94 V-0 BLACK
 2) TERMINAL: BRASS, 0.8t, Tin PLATED
 3) TERMINAL SCREWS: STEEL, Ni PLATED, M3
 4) COVER MATERIAL: PC
 APPROVAL:  us
 RoHS Compliant



PART NUMBER:
OSTYK402XX230

No. of Poles ————
 02: 2 Poles
 03: 3 Poles
 04: 4 Poles
 ⋮
 30: 30 Poles

N=Number of poles



P.C.B LAYOUT

THESE DRAWINGS AND SPECIFICATIONS ARE THE PROPERTY OF ON-SHORE TECHNOLOGY, INC. AND SHALL NOT BE REPRODUCED, COPIED OR USED IN ANY MANNER WITHOUT THE PRIOR WRITTEN CONSENT OF ON-SHORE TECHNOLOGY, INC.



TITLE								OSTYK-402 W/O Flange & With Cover Series	
PART NO.		OSTYK402XX230		DWG NO.		OSTYK402XX230.DWG			
APPROVED		CHECKED	DESIGNED	DRAWN	CUST NO.		Tolerance		
			kind 2008.1.15	kind 2008.1.15			X.	±0.50	
							X.X	±0.30	
							X.XX	±0.10	
							X°	±1°	
					SHEET: 01/01		REV: B		