

THIS DRAWING IS UNPUBLISHED.

RELEASED FOR PUBLICATION

© COPYRIGHT - By -

ALL RIGHTS RESERVED.

LOC FT DIST 0

REVISIONS

| P | LTR | DESCRIPTION               | DATE    | DWN | APVD |
|---|-----|---------------------------|---------|-----|------|
| P |     | REVISED PER ECO-11-004917 | 11MAR11 | RK  | HMR  |

MATERIALS:

HOUSING: POLYAMIDE, BLACK, UL94V-0.

TERMINALS: COPPER ALLOY, TIN PLATE.

SCREWS: ZINC PLATED, STEEL WITH CLEAR CHROMATE.

ELECTRICAL:

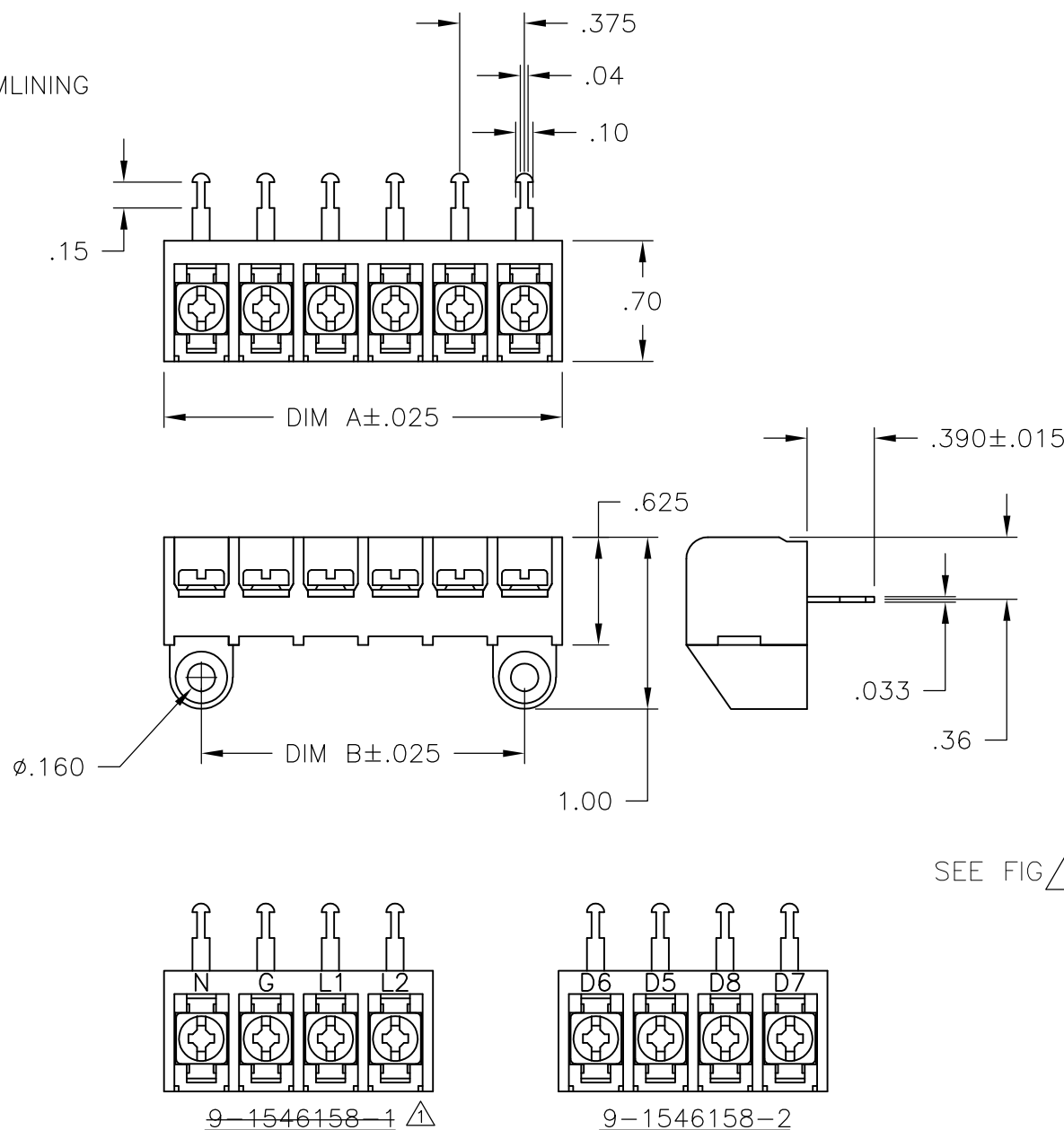
RATING: 25A, 300V.

WIRE RANGE: 12-22 AWG.

MECHANICAL:

MAXIMUM TORQUE RATING: 7 IN-LBS.

1 OBSOLETE PARTS: OBSOLETE CIS STREAMLINING PER D.RENAUD/D.SINISI

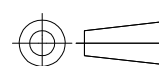


SEE FIG 1 SEE FIG 1 OBSOLETE

| 10.875   | 11.311   | 30          | 6STR-30-006    | 1546816-2   |
|----------|----------|-------------|----------------|-------------|
| 10.500   | 10.936   | 29          | 6STR-29-006    | 1546816-1   |
| 10.125   | 10.561   | 28          | 6STR-28-006    | 2-1546174-0 |
| 9.750    | 10.186   | 27          | 6STR-27-006    | 1-1546174-9 |
| 9.375    | 9.811    | 26          | 6STR-26-006    | 1-1546174-8 |
| 9.000    | 9.436    | 25          | 6STR-25-006    | 1-1546174-7 |
| 8.625    | 9.061    | 24          | 6STR-24-006    | 1-1546174-6 |
| 8.250    | 8.686    | 23          | 6STR-23-006    | 1-1546174-5 |
| 7.875    | 8.311    | 22          | 6STR-22-006    | 1-1546174-4 |
| 7.500    | 7.936    | 21          | 6STR-21-006    | 1-1546174-3 |
| 7.125    | 7.561    | 20          | 6STR-20-006    | 1-1546174-2 |
| 6.750    | 7.186    | 19          | 6STR-19-006    | 1-1546174-1 |
| 6.375    | 6.811    | 18          | 6STR-18-006    | 1-1546174-0 |
| 6.000    | 6.436    | 17          | 6STR-17-006    | 1546174-9   |
| 5.625    | 6.061    | 16          | 6STR-16-006    | 1546174-8   |
| 5.250    | 5.686    | 15          | 6STR-15-006    | 1546174-7   |
| 4.875    | 5.311    | 14          | 6STR-14-006    | 1546174-6   |
| 4.500    | 4.936    | 13          | 6STR-13-006    | 1546174-1   |
| 4.125    | 4.561    | 12          | 6STR-12-006    | 1546174-5   |
| 3.750    | 4.186    | 11          | 6STR-11-006    | 1546174-4   |
| 3.375    | 3.811    | 10          | 6STR-10-006    | 1546174-3   |
| 3.000    | 3.436    | 9           | 6STR-09-006    | 1546174-2   |
| 2.625    | 3.061    | 8           | 6STR-08-006    | 9-1546158-7 |
| 2.250    | 2.686    | 7           | 6STR-07-006    | 9-1546158-5 |
| 1.875    | 2.311    | 6           | 6STR-06-006    | 6-1437654-7 |
| 1.500    | 1.936    | 5           | 6STR-05-006    | 9-1546158-3 |
| 1.125    | 1.561    | 4           | 6STR-04-392    | 9-1546158-2 |
| 1.125    | 1.561    | 4           | 6STR-04-263    | 9-1546158-1 |
| 1.125    | 1.561    | 4           | 6STR-04-006    | 6-1437654-1 |
| .750     | 1.186    | 3           | 6STR-03-006    | 5-1437654-6 |
| .375     | .811     | 2           | 6STR-02-006    | 5-1437654-3 |
| DIM. "B" | DIM. "A" | NO. OF POS. | CATALOG NUMBER | PART NO.    |

THIS DRAWING IS A CONTROLLED DOCUMENT.

DIMENSIONS: INCHES



| TOLERANCES UNLESS OTHERWISE SPECIFIED: |        |
|--|--------|
| 0 PLC                                  | ± -    |
| 1 PLC                                  | ± -    |
| 2 PLC                                  | ± .02  |
| 3 PLC                                  | ± .010 |
| 4 PLC                                  | ± -    |
| ANGLES                                 | ± 1°   |
| FINISH                                 | -      |

MATERIAL -

|                  |            |        |
|------------------|------------|--------|
| DWN              | S SCHLEGEL | 8/5/05 |
| CHK              | S YODER    | 8/5/05 |
| APVD             | S YODER    | 8/5/05 |
| PRODUCT SPEC     | -          | -      |
| APPLICATION SPEC | -          | -      |
| WEIGHT           | -          | -      |
| CUSTOMER DRAWING |            |        |



|             |           |               |               |
|-------------|-----------|---------------|---------------|
| NAME        |           |               |               |
| 6STR-XX-006 |           |               |               |
| SIZE        | CAGE CODE | DRAWING NO    | RESTRICTED TO |
| A3          | 00779     | C-5-1437654-3 | -             |
| SCALE       |           | SHEET         | REV           |
| NTS         |           | 1 OF 1        | P             |