

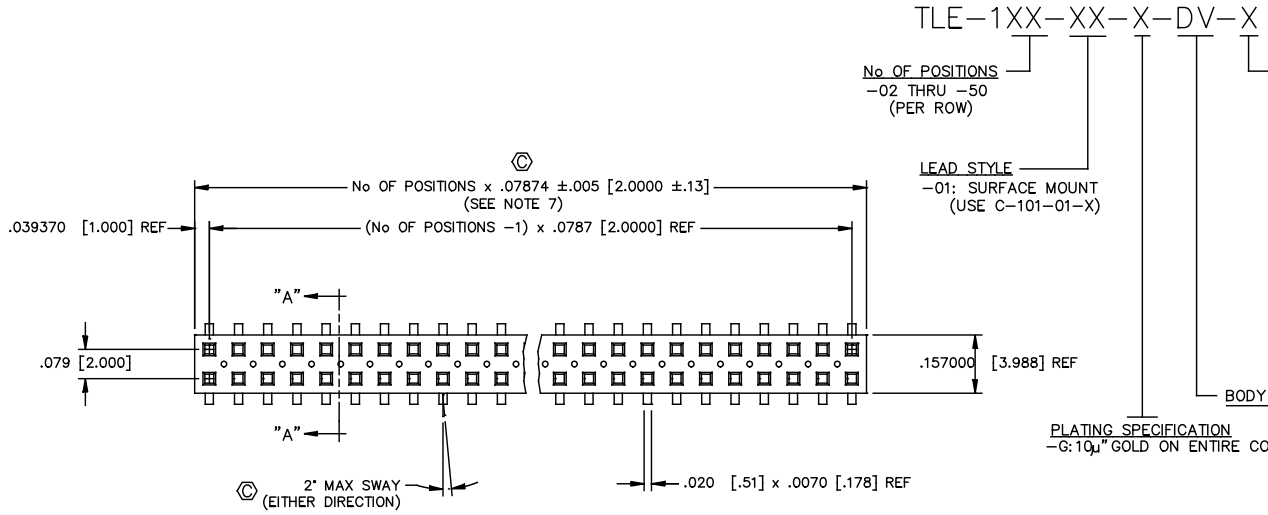
REVISION AE

DO NOT SCALE FROM THIS PRINT

DIMENSIONS ARE IN INCHES		UNLESS OTHERWISE NOTED		TOLERANCES ARE:	
ONE PLACE DECIMALS ± .1	THREE PLACE DECIMALS ± .005	ANGLES ± 2°			
TWO PLACE DECIMALS ± .01	FOUR PLACE DECIMALS ± .0020				

TITLE:
DUAL ROW 2mm x
2mm ASSEMBLY

DWG NO:
TLE-1XX-XX-X-DV-X
SHEET 1 OF 2



TLE-1XX-XX-X-DV-X

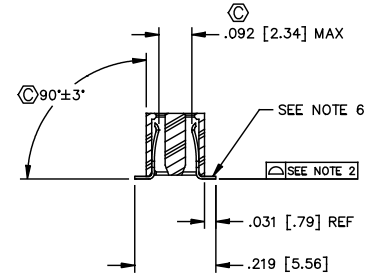
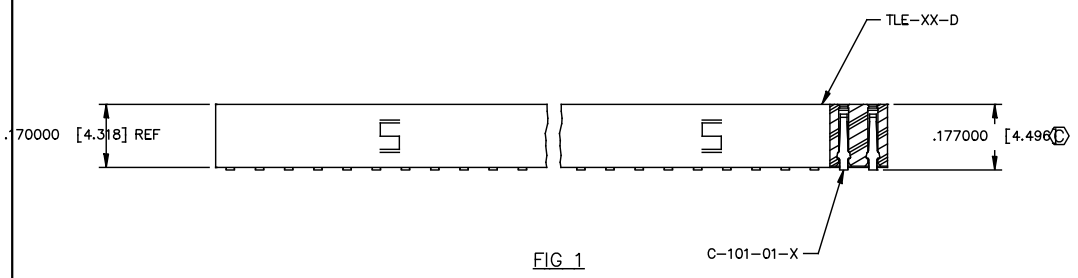
No OF POSITIONS
-02 THRU -50 (PER ROW)

LEAD STYLE
-01: SURFACE MOUNT (USE C-101-01-X)

OPTION
-A: ALIGNMENT PIN (SEE FIG 2 & 3, SHT. 2) (USE TLE-XX-D-XX) (MOLDED TO POSITION OR STAKED) (SAMTEC DISCRETION WHICH -A PIN IS USED) (MOLDED 3 POSITION MIN. SEE FIG 2, SHT 2.) (STAKED 4 POSITION MIN. SEE FIG 3, SHT 2)
-P: PICK & PLACE PAD OPTION (SEE FIG 4, SHT 2) (USE LMP-03) (4 POS. MIN.)
-TR: TAPE AND REEL OPTION (AVAILABLE FOR 02 THROUGH 37 POSITIONS ONLY)
-K: POLYAMIDE FILM PAD (3 POS MIN) (USE K-DOT-.197-.344-.005) (SEE FIGURE 5, SHEET 2)

BODY SPECIFICATION

PLATING SPECIFICATION
-G: 10μ" GOLD ON ENTIRE CONTACT



- NOTES:
1. MINIMUM PUSHOUT FORCE: .4 lb.
 2. COPLANARITY; POS -02 THRU -26: .004
POS -27 THRU -50: .006
 3. REPRESENTS A CRITICAL DIMENSION.
 4. ALL POSITIONS TO BE PACKAGED IN TUBES.
 5. FOR EVERY FINISHED PART, ONE POSITION WILL BE LOST WHEN CUTTING BODY TO LENGTH.
 6. BURR ALLOWANCE: .003 [.08] MAX
 7. CUT FLASH TO BE .010 [.25] MAX WITH NO FLASH ALLOWED IN HOLES OR EXTENDING BELOW LEADS.
 8. END WALLS TO BE .027+/- .005 [.69+/- .13] AFTER CUT.

PATENT NUMBERS
5713755 / 5961339

PROPRIETARY NOTE
This document contains confidential and proprietary information of Samtec, Inc. It is intended for the use of the recipient only. It is not to be distributed, copied, or otherwise used without the express written consent of Samtec, Inc.

MATERIAL:
BODY:
VECTRA E1301
COLOR: BLACK
TERMINAL:
PHOSPHER BRONZE

samtec

520 PARK EAST BLVD. NEW ALBANY, INDIANA 47150
PHONE (812) 944-6733 P.O. BOX 1147
CODE 55322

MADE BY:
D PURVIS 01-20-97

TLE-1XX-XX-X-DV-X
SHEET 1 OF 2