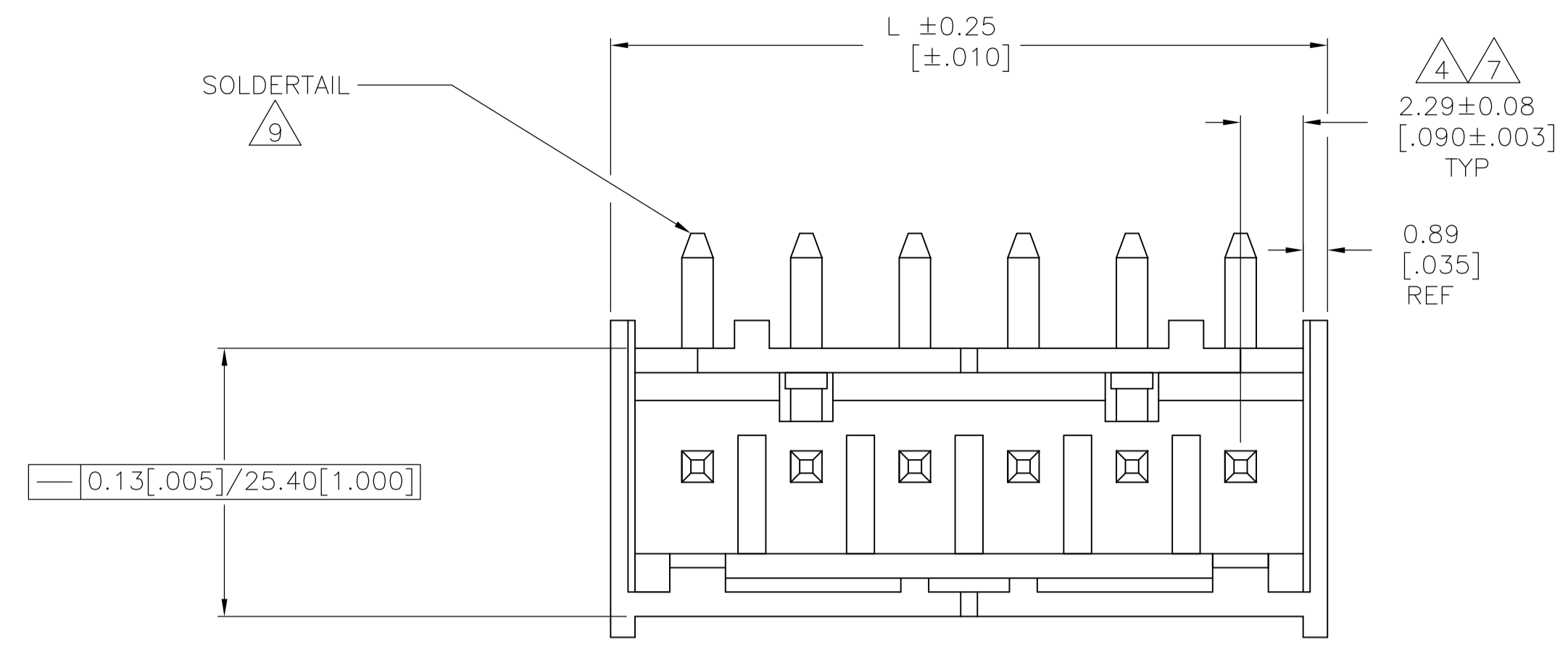


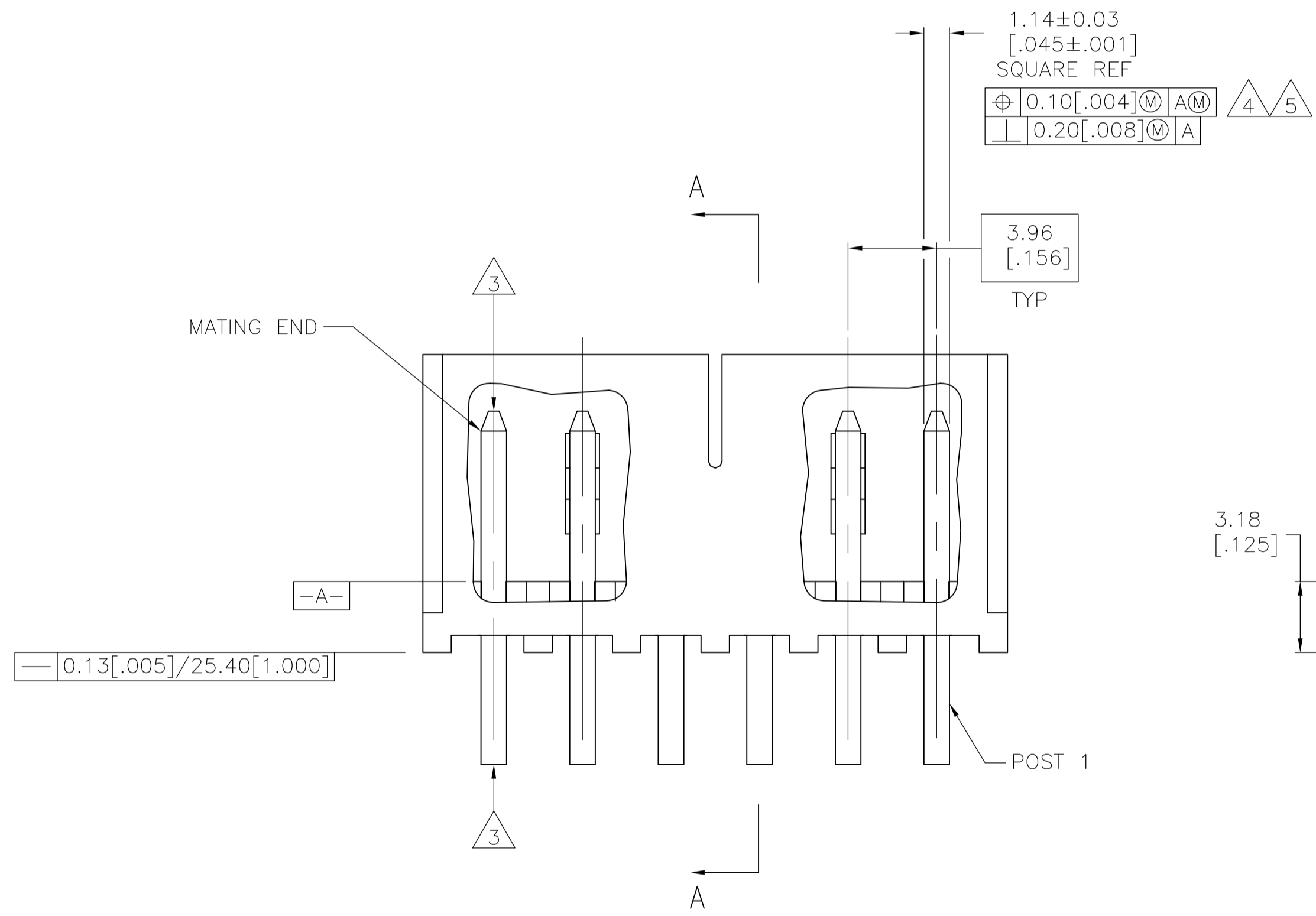
LOC		DIST		REVISIONS			
P	LTR	DESCRIPTION	DATE	DMN	APVD		
D		EC 0638 1113 04	29DEC05	BSV	DB		
D1		REVISED PER ECO-09-021510	14SEP09	KK	AEG		



4 7
 2.29±0.08
 [.090±.003]
 TYP

0.89
 [.035]
 REF

0.13[.005]/25.40[1.000]

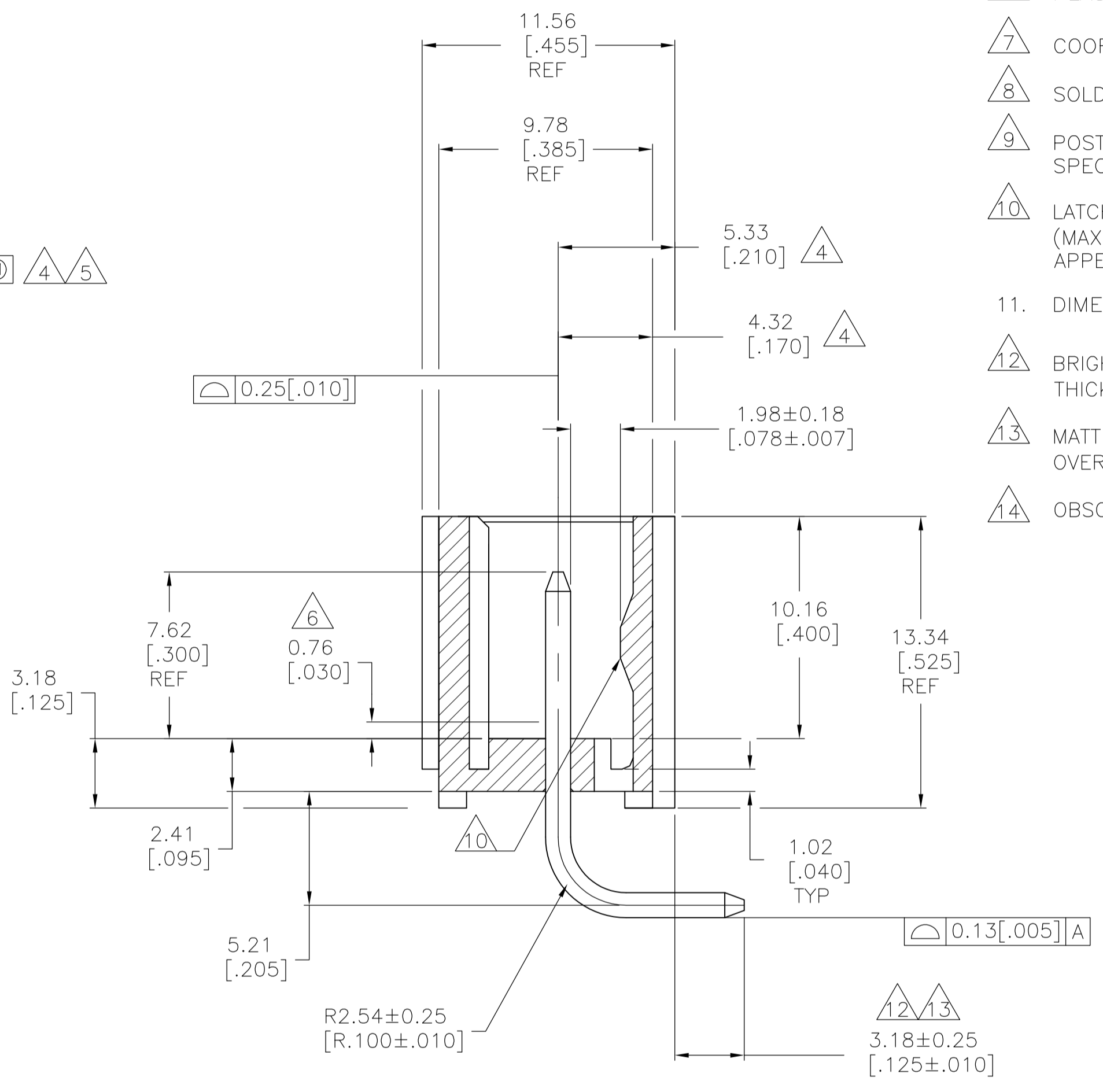


1.14±0.03
 [.045±.001]
 SQUARE REF

4 5
 0.10[.004] M A M
 0.20[.008] M A

3.96
 [.156]
 TYP

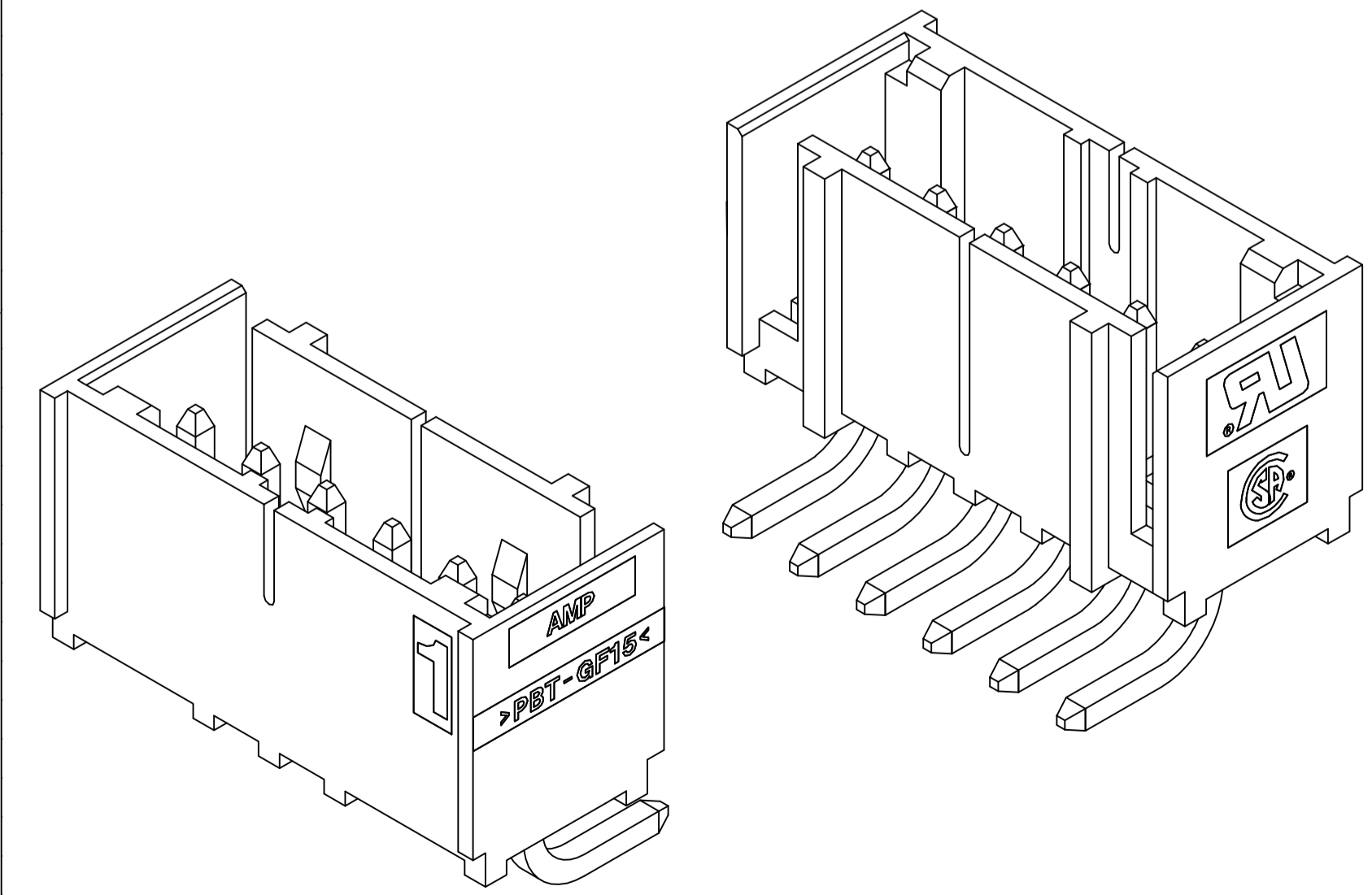
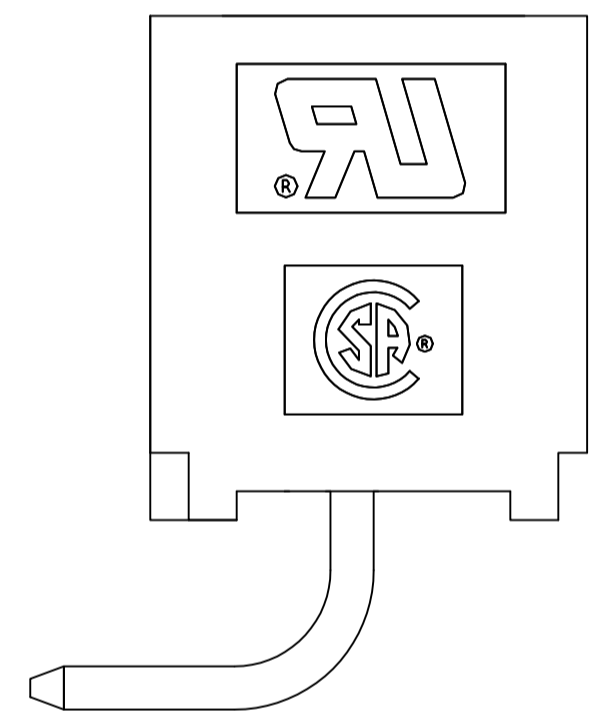
0.13[.005]/25.40[1.000]



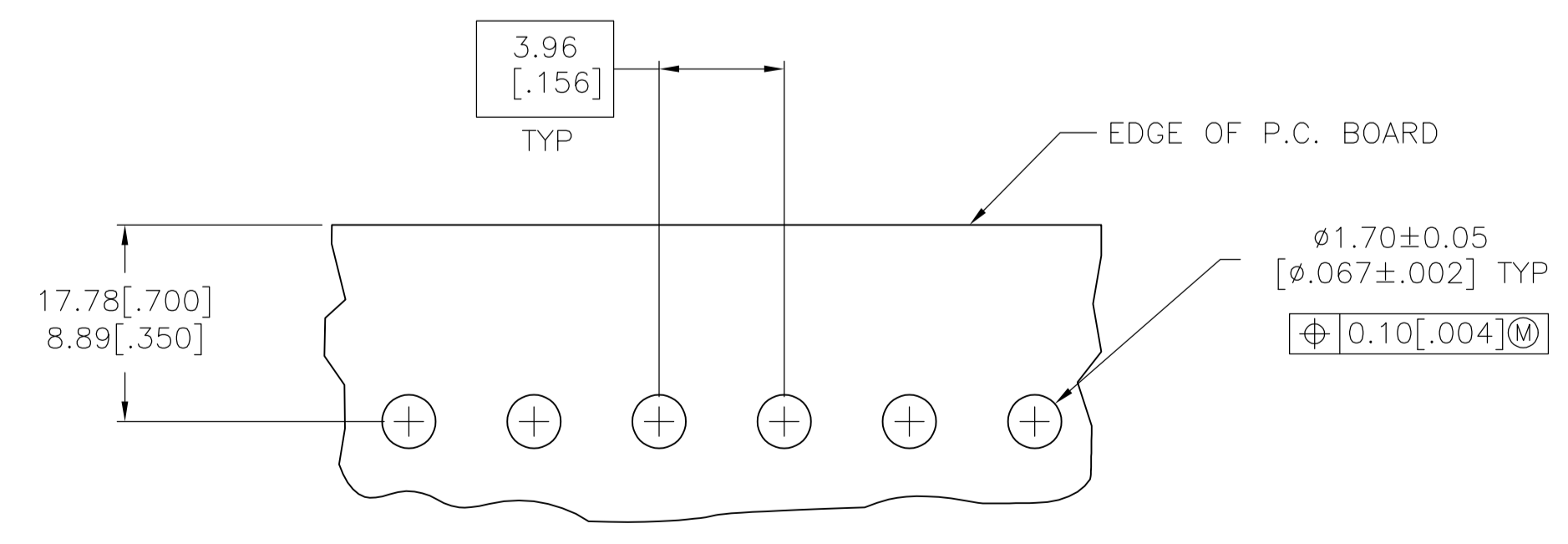
SECTION A-A

647126-6 SHOWN

- 1 MATERIAL:
HOUSING - THERMOPLASTIC POLYESTER, GLASS FILLED, UL94-0.
POST - COPPER ALLOY
- 2 FINISH:
HOUSING - BLACK
POST - SEE NOTES 12 AND 13.
- 3 POST TO WITHSTAND 3LBS (16N) MIN AXIAL FORCE IN THIS DIRECTION WITHOUT DISLODGING.
- 4 APPLIES AT -A- .
- 5 APPLIES WHEN HEADER IS STRAIGHT .
- 6 PLASTIC PROJECTIONS PERMITTED IN THIS ZONE.
- 7 COORDINATE DIMENSIONS APPLIES FROM CENTER OF ACTUAL FEATURE.
- 8 SOLDER SIDE OF BOARD IS SHOWN.
- 9 POST SOLDERTAIL MUST COMPLY WITH AMP SOLDERABILITY SPEC 109-11-2.
- 10 LATCH DETENT FEATURE APPEARS 1 PLACE ON EACH END OF PART (MAX OF 2 PER PART) ON ALL POSITIONS 4 THRU 12. THE LATCH APPEARS ONLY ONE PLACE ON 2 & 3 POSITION PARTS.
- 11. DIMENSIONS IN BRACKETS ARE IN INCHES.
- 12 BRIGHT TIN LEAD (93/7) PLATE 0.00381 - 0.00889 [.000150 - .000350] THICK, OVER NICKEL UNDERPLATE 0.00127 [.000050] MIN THICK.
- 13 MATTE TIN PLATE 0.00381 - 0.00889 [.000150 - .000350] THICK, OVER NICKEL UNDERPLATE 0.00127 [.000050] MIN THICK.
- 14 OBSOLETE PARTS: OBSOLETE CIS STREAMLINING PER D.RENAUD/D.SINISI

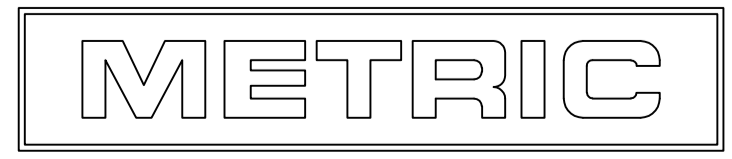


3-DIMENSIONAL MODEL NTS



RECOMMENDED MOUNTING HOLE PATTERN FOR 1.57[.062] THICK P.C. BOARD

PLATING	MM	IN	NO. OF POSN	PART NUMBER
SUPERSEDED	49.94	1.966	12	3-647126-2
	45.97	1.810	11	3-647126-1
	42.01	1.654	10	3-647126-0
	38.05	1.498	9	2-647126-9
	34.09	1.342	8	2-647126-8
	30.12	1.186	7	2-647126-7
	26.16	1.030	6	2-647126-6
	22.20	.874	5	2-647126-5
	18.24	.718	4	2-647126-4
	14.27	.562	3	2-647126-3
	10.31	.406	2	2-647126-2
	SUPERSEDED	49.94	1.966	12
45.97		1.810	11	1-647126-1
42.01		1.654	10	1-647126-0
38.05		1.498	9	647126-9
34.09		1.342	8	647126-8
30.12		1.186	7	647126-7
26.16		1.030	6	647126-6
22.20		.874	5	647126-5
18.24		.718	4	647126-4
14.27		.562	3	647126-3
10.31		.406	2	647126-2



THIS DRAWING IS A CONTROLLED DOCUMENT.

DIN	B. LEWIS	17JUN98	Tyco Electronics Corporation
CHK	R. SWING	17JUN98	Harrisburg, PA 17105-3608
APP'D	D. CLARK	17JUN98	NAME
DIMENSIONS: mm [INCHES]		TOLERANCES UNLESS OTHERWISE SPECIFIED:	
0. PLC	± .005	0.005	
1. PLC	± .005	0.005	
2. PLC	± .005	0.005	
3. PLC	± .005	0.005	
4. PLC	± .005	0.005	
ANGLES	± .005	0.005	
MATERIAL	-	FINISH	-
CUSTOMER DRAWING		SCALE	5:1
SHEET		1	OF 1
REV		D1	

MTA-156 SHROUDED HEADER ASSEMBLY, RIGHT ANGLE REAR BEND .045 SQUARE POST, TIN, W/O RETENTION PEG

SIZE: A1 CAGE CODE: 00779 DRAWING NO: 647126