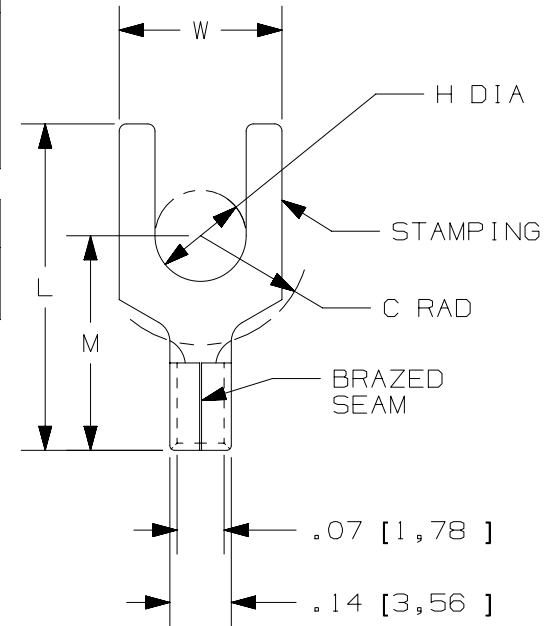


THIS COPY IS PROVIDED ON A RESTRICTED BASIS AND IS NOT TO BE USED IN ANY WAY DETRIMENTAL TO THE INTERESTS OF PANDUIT CORP.

| PANDUIT PART # | STUD SIZE | | DIMENSIONS in. [mm] | | | | |
|----------------|-----------|--------|---------------------|---------------|---------------|---------------|---------------|
| | ENGLISH | METRIC | L ± .03 [0,8] | W ± .01 [0,3] | C ± .02 [0,5] | M ± .03 [0,8] | H ± .01 [0,3] |
| PM1-3F* | -- | M3 | .63 [16,00] | .23 [5,84] | .22 [5,59] | .49 [12,45] | .13 [3,30] |
| P18-6F | #6 | M3,5 | .63 [16,00] | .30 [7,62] | .21 [5,33] | .49 [12,45] | .15 [3,81] |
| P18-6FN* | #6 | M3,5 | .63 [16,00] | .24 [6,10] | .19 [4,83] | .49 [12,45] | .15 [3,81] |
| P18-8F | #8 | M4 | .69 [17,53] | .32 [8,13] | .25 [6,35] | .53 [13,46] | .17 [4,32] |
| P18-10F | #10 | -- | .71 [18,03] | .35 [8,89] | .25 [6,35] | .55 [13,97] | .20 [5,08] |
| P18-10FN* | #10 | -- | .71 [18,03] | .31 [7,87] | .25 [6,35] | .55 [13,97] | .20 [5,08] |
| PM1-5F* | -- | M5 | .71 [18,03] | .35 [8,80] | .26 [6,60] | .55 [13,97] | .20 [5,08] |
| P18-14F | 1/4" | M6 | .88 [22,35] | .44 [11,18] | .33 [8,38] | .63 [16,00] | .27 [6,86] |

| UL & CSA TOOLS |
|--|
| CT-100A CT-200 CT-600-A (CT-570CH) CT-1570 CT-2500 (CT-2570CH) |

| PANDUIT APPROVED TOOLS |
|------------------------|
| CT-160 CT-260 |



*NOT CSA CERTIFIED

NOTES:

- UL LISTED & CSA CERTIFIED FOR:
 - #22-16 AWG [0,5-1,5 mm²] SOLID OR STRANDED COPPER WIRE
 - 302°F [150°C] MAX. OPERATING TEMPERATURE
 - 2000 VOLTS MAX
- SEE www.panduit.com FOR PACKAGE QUANTITIES
- MATERIAL:
 - STAMPING: .032" [0,8] THK COPPER, TIN PLATED
- DIMENSIONS IN BRACKETS ARE METRIC EQUIVALENT
- WIRE STRIP LENGTH: 9/32" ^{+1/32}₋₀ [7,1mm ^{+0,8}₋₀]



| | | | | |
|---|------|----------------------------------|--------|------|
| TITLE | | #22-16 BARREL NON-INSULATED FORK | | |
| ITEM REVISION NAME | | CUSTOMER DRAWING | | |
| DATASET FILE NAME | | N41461BA/10 | | |
| UNLESS OTHERWISE SPECIFIED, DIMENSIONAL TOLERANCES ARE: IN [mm] | | | | |
| .X ± | | .XXX ± | | |
| .XX ± | | ANGLES ± | | |
| THIRD ANGLE PROJECTION | | DRAWING NUMBER: A41461 | | |
| DRAWN BY | DATE | CHK | SCALE | SIZE |
| DRL | - | | N.T.S. | A |

| REV | DATE | BY | CHK | APR | DESCRIPTION | ECN |
|-----|----------|------|------|-----|--|-----------------|
| 10 | 5/17 | JHNU | TMR | RGB | ADDED CSA BACK TO DWG, UPDATED TOOL CHART | N41461BA-A41461 |
| 09 | 06/14 | MBY | JHNU | RGB | REVISED NOTES, MOVED TOOLS TO TABLE, REVISED CERTIFICATION | N41461BA-A41461 |
| 08 | 07.20.12 | BDK | LCA | VMB | ADDED PM1-3F AND PM1-5F. ADDED METRIC EQUIVALENT. REVISED INSTALLATION TOOLS NOTE. BROUGHT DRAWING TO CURRENT STANDARDS. | N41461BA-DC |

D10100DA/12