

SIGN	DATE	DESCRIPTION	APPROVER

THIS IS CAD DRAWING, DO NOT REVISE MANUALLY!!!

SPECIFICATIONS

VOLTAGE & CURRENT: 300 V, 20 A
 WITHSTANDING VOLTAGE: AC 2000 V/Min
 INSULATION RESISTANCE: 1000 MΩ OR MORE AT DC 500 V
 TEMPERATURE RANGE: -40 °C ~ +105 °C
 SCREW TORQUE VALUE: 12 Lb-In.
 WIRE RANGE: 22 - 12AWG
 1) MOLDED PARTS: POLYIMIDE 66, UL 94 V-0 BLACK
 2) TERMINAL: BRASS, 0.8t, Tin PLATED
 3) TERMINAL SCREWS: STEEL, Ni PLATED, M3.5

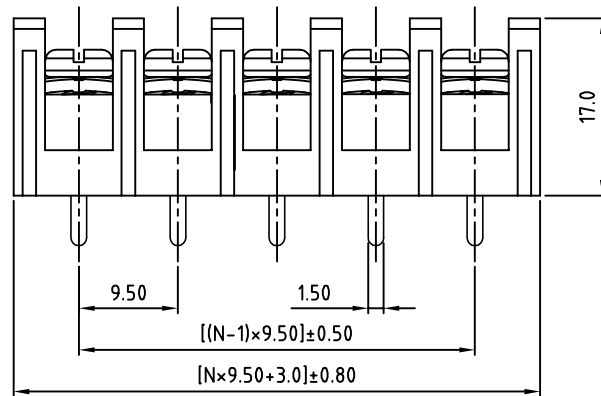
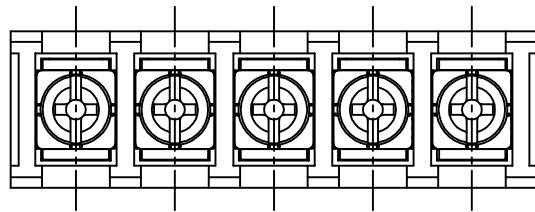
APPROVAL:  us

RoHS Compliant

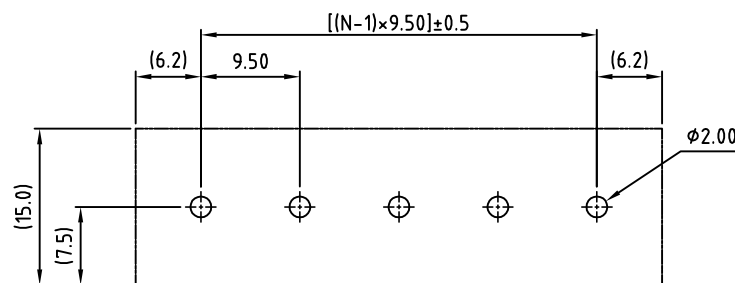
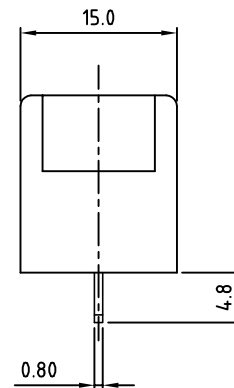
PART NUMBER:

OSTYK501XX030

No. of Poles
 02: 2 Poles
 03: 3 Poles
 04: 4 Poles
 ⋮
 30: 30 Poles



N=Number of contacts



P.C.B LAYOUT

THESE DRAWINGS AND SPECIFICATIONS ARE THE PROPERTY OF ON-SHORE TECHNOLOGY, INC. AND SHALL NOT BE REPRODUCED, COPIED OR USED IN ANY MANNER WITHOUT THE PRIOR WRITTEN CONSENT OF ON-SHORE TECHNOLOGY, INC.



TITLE								OSTYK-501 W/O Flange & W/O Cover Series	
PART NO.		OSTYK501XX030		DWG NO.		OSTYK501XX030.DWG		Tolerance	
APPROVED		CHECKED	DESIGNED	DRAWN	CUST NO.		UNIT: mm		X. ±0.50
Shi Jun 2006.11.07		Seamus 2006.11.06	梁仁松 2006.08.3	梁仁松 2006.08.3			SCALE: NONE		X.X ±0.30
SHEET: 01/01		REV: C		X.XX ±0.10		X° ±1°			