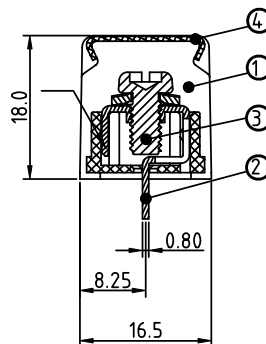
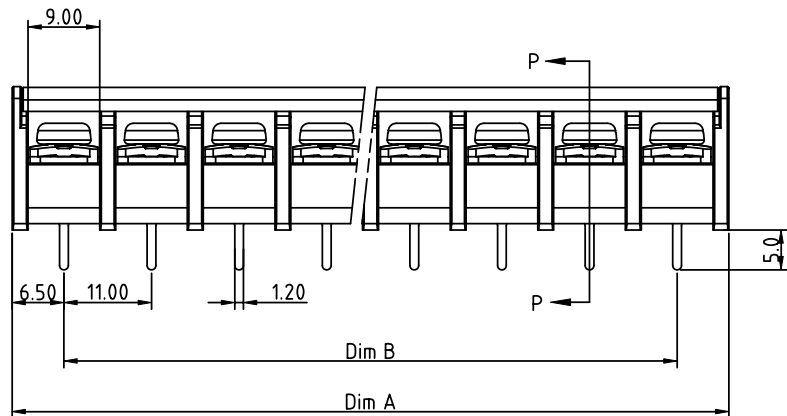
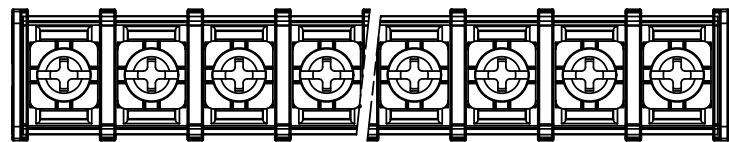
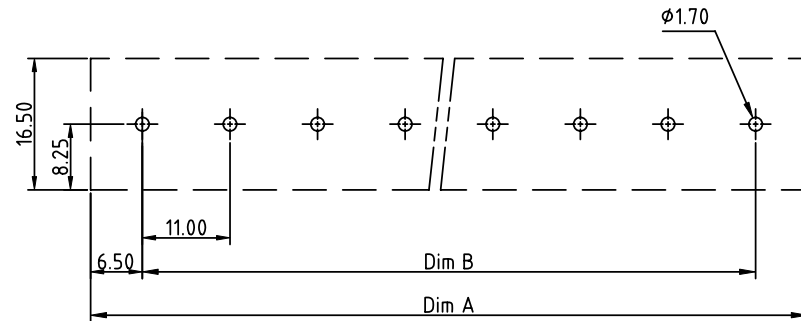


| | |
|----------------|---------|
| PRODUCT NUMBER | PITCH |
| YK701xx2x0J0G | 11.00mm |



Section P-P



RECOMMENDED P.C.B LAYOUT
TOP VIEW

- MATERIALS & ELECTRICAL**
- RATED VOLTAGE & CURRENT:** 300 V, 30 A
- WITHSTAND VOLTAGE:** AC 2000 V/Min
- INSULATION RESISTANCE:** 1000 MΩ OR MORE AT DC 500 V
- OPERATING TEMPERATURE RANG:** -40 °C ~ +115 °C
- SCREW TORQUE VALUE:** 13Lb-In
- WIRE RANGE:** 22 - 10AWG
- 1) HOUSING:** THERMOPLASTICS, UL94-V0 BLACK
- 2) TERMINAL:** BRASS, 0.8t
- 3) TERMINAL SCREWS:** STEEL, M4.0
- 4) COVER:** PC
- APPROVAL: us

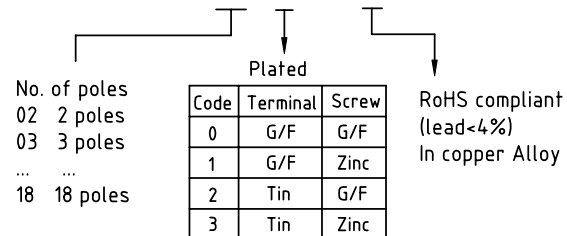
DIMENSION

| | |
|-------|-------------|
| Dim A | N×11.00±2.0 |
| Dim B | (N-1)×11.0 |

N=Number of poles

| Poles | Tolerance |
|---------|-----------|
| 2p-4p | ±0.20 |
| 5p-11p | ±0.30 |
| 17p-18p | ±0.40 |

PART NO.: YK 701xx 2 x 0 J0G



| | | | | | |
|-------------|----------------|-------------------------|-------------------------|---------------------------------------|----------------------------------|
| mat'l. code | | surface ASME Y14.5 ✓ | tolerance ASME Y14.5 | projection | product family TERMINAL BLOCK |
| ltr | ecn no | dr | date | tolerances unless otherwise specified | title TERMINAL BLOCK |
| | | | | angles X°±1' | BARRIER TYPE, WITH COVER |
| | | | | scale MM | dwg no YK701xx2x0J0G |
| | | | | dr EVAN LU 061114 | sheet 1 of 1 size A4 |
| | | | | enr EVAN LU 061114 | type CUSTOMER Drawing |
| | | | | chr HANKE FENG 061114 | |
| | | | | appd SHI JUN 061114 | |
| sheet index | revision sheet | A | 1 | | |