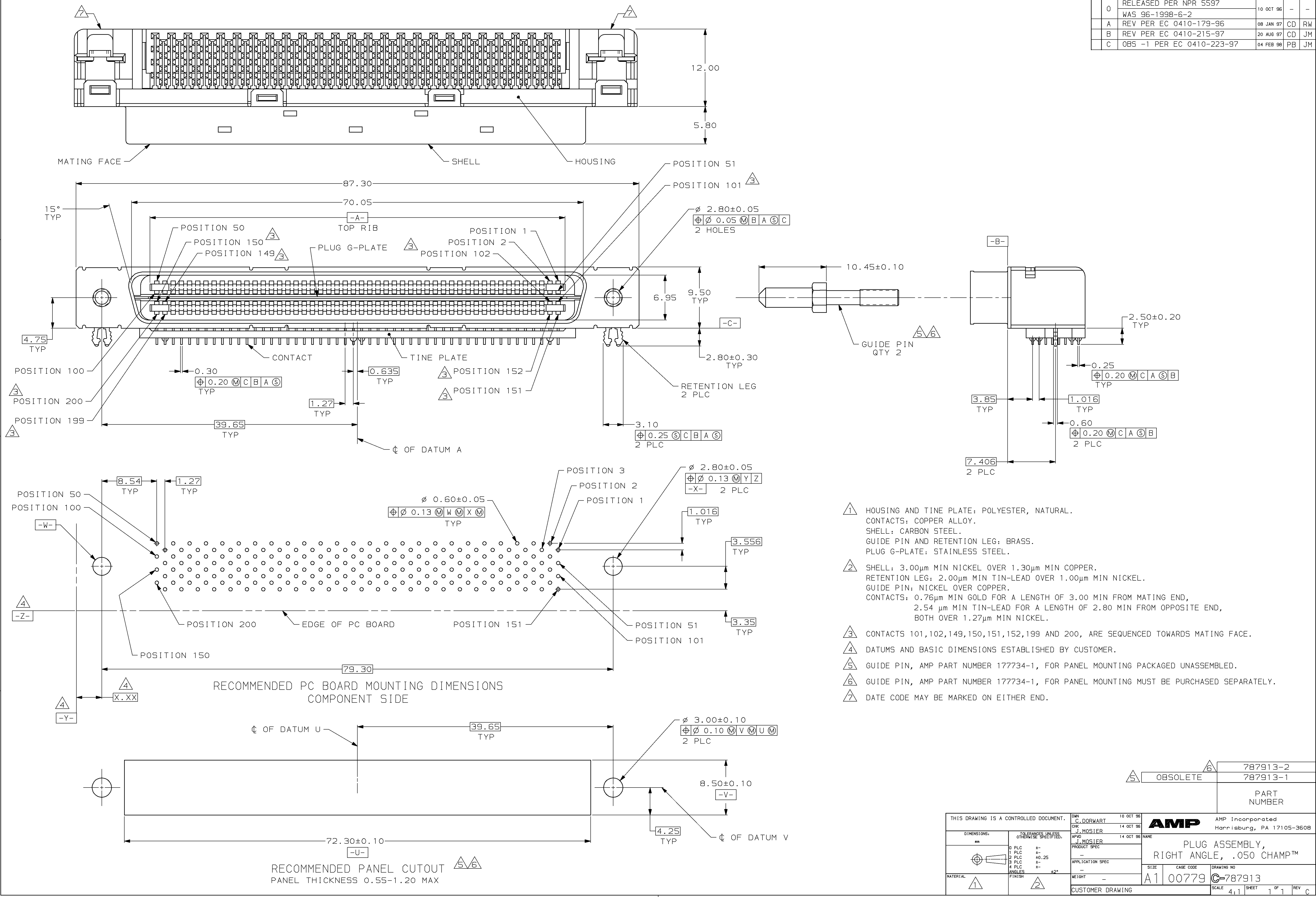


REVISONS		DATE	DMN	APVD
0	RELEASED PER NPR 5597 WAS 96-1998-6-2	10 OCT 96	-	-
A	REV PER EC 0410-179-96	08 JAN 97	CD	RW
B	REV PER EC 0410-215-97	20 AUG 97	CD	JM
C	OBS -1 PER EC 0410-223-97	04 FEB 98	PB	JM



- ① HOUSING AND TINE PLATE: POLYESTER, NATURAL.
CONTACTS: COPPER ALLOY.
SHELL: CARBON STEEL.
GUIDE PIN AND RETENTION LEG: BRASS.
PLUG G-PLATE: STAINLESS STEEL.
- ② SHELL: 3.00µm MIN NICKEL OVER 1.30µm MIN COPPER.
RETENTION LEG: 2.00µm MIN TIN-LEAD OVER 1.00µm MIN NICKEL.
GUIDE PIN: NICKEL OVER COPPER.
CONTACTS: 0.76µm MIN GOLD FOR A LENGTH OF 3.00 MIN FROM MATING END,
2.54 µm MIN TIN-LEAD FOR A LENGTH OF 2.80 MIN FROM OPPOSITE END,
BOTH OVER 1.27µm MIN NICKEL.
- ③ CONTACTS 101,102,149,150,151,152,199 AND 200, ARE SEQUENCED TOWARDS MATING FACE.
- ④ DATUMS AND BASIC DIMENSIONS ESTABLISHED BY CUSTOMER.
- ⑤ GUIDE PIN, AMP PART NUMBER 177734-1, FOR PANEL MOUNTING PACKAGED UNASSEMBLED.
- ⑥ GUIDE PIN, AMP PART NUMBER 177734-1, FOR PANEL MOUNTING MUST BE PURCHASED SEPARATELY.
- ⑦ DATE CODE MAY BE MARKED ON EITHER END.

⑦	787913-2
⑧	OBSOLETE
	787913-1
PART NUMBER	

THIS DRAWING IS A CONTROLLED DOCUMENT.		DMN C. DORWART	10 OCT 96	AMP	AMP Incorporated Harrisburg, PA 17105-3508	
DIMENSIONS: mm		CHK J. MOSIER	14 OCT 96		NAME PLUG ASSEMBLY, RIGHT ANGLE, .050 CHAMP™	
TOLERANCES UNLESS OTHERWISE SPECIFIED:		APPD J. MOSIER	14 OCT 96	PRODUCT SPEC		
0 PLC	±	APPLICATION SPEC		SCALE		
1 PLC	±0.25	WEIGHT		SHEET		
2 PLC	±	CUSTOMER DRAWING		REV		
3 PLC	±			1 OF 1		
4 PLC	±			REV		
ANGLES	±2°					
MATERIAL	FINISH					