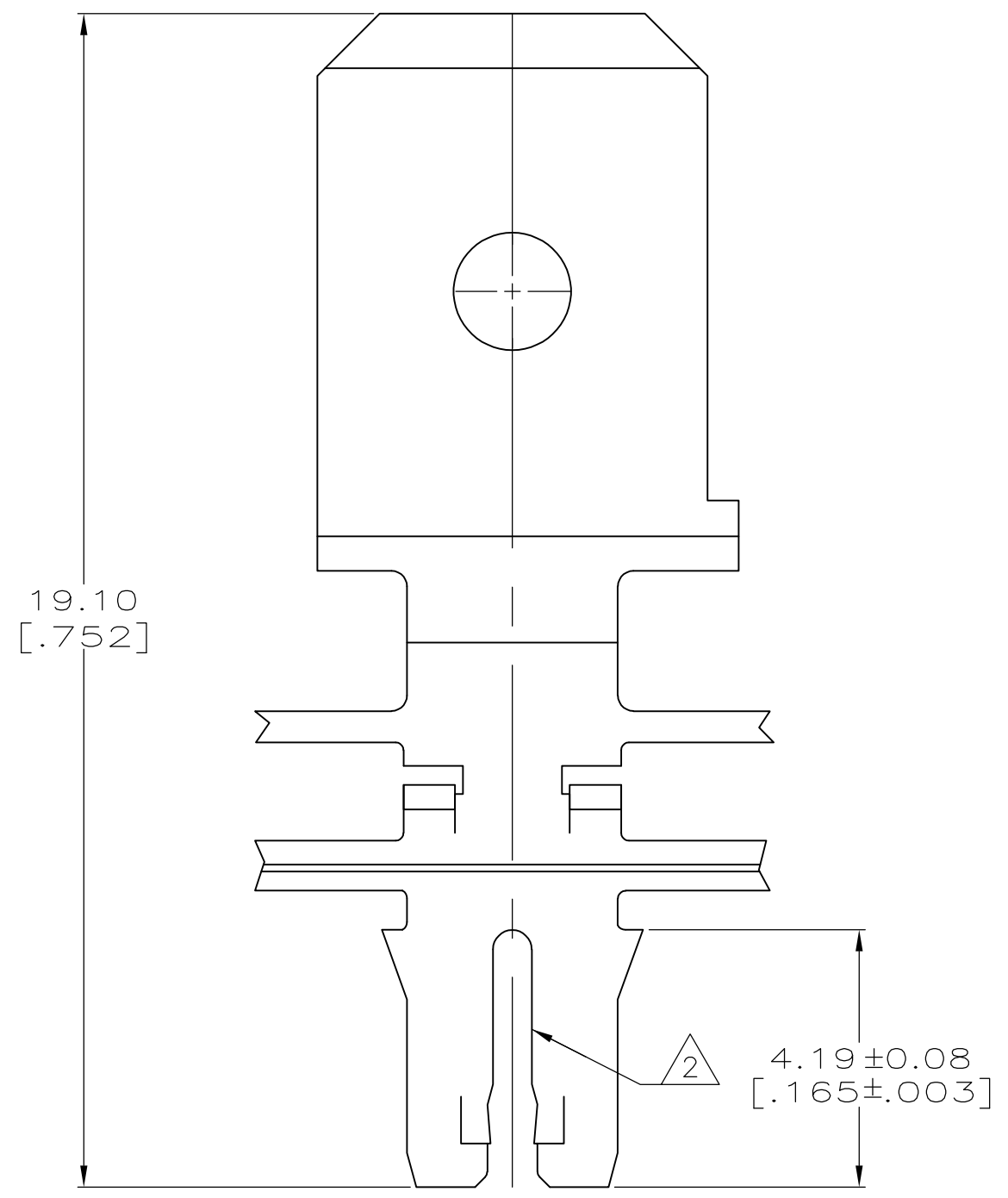
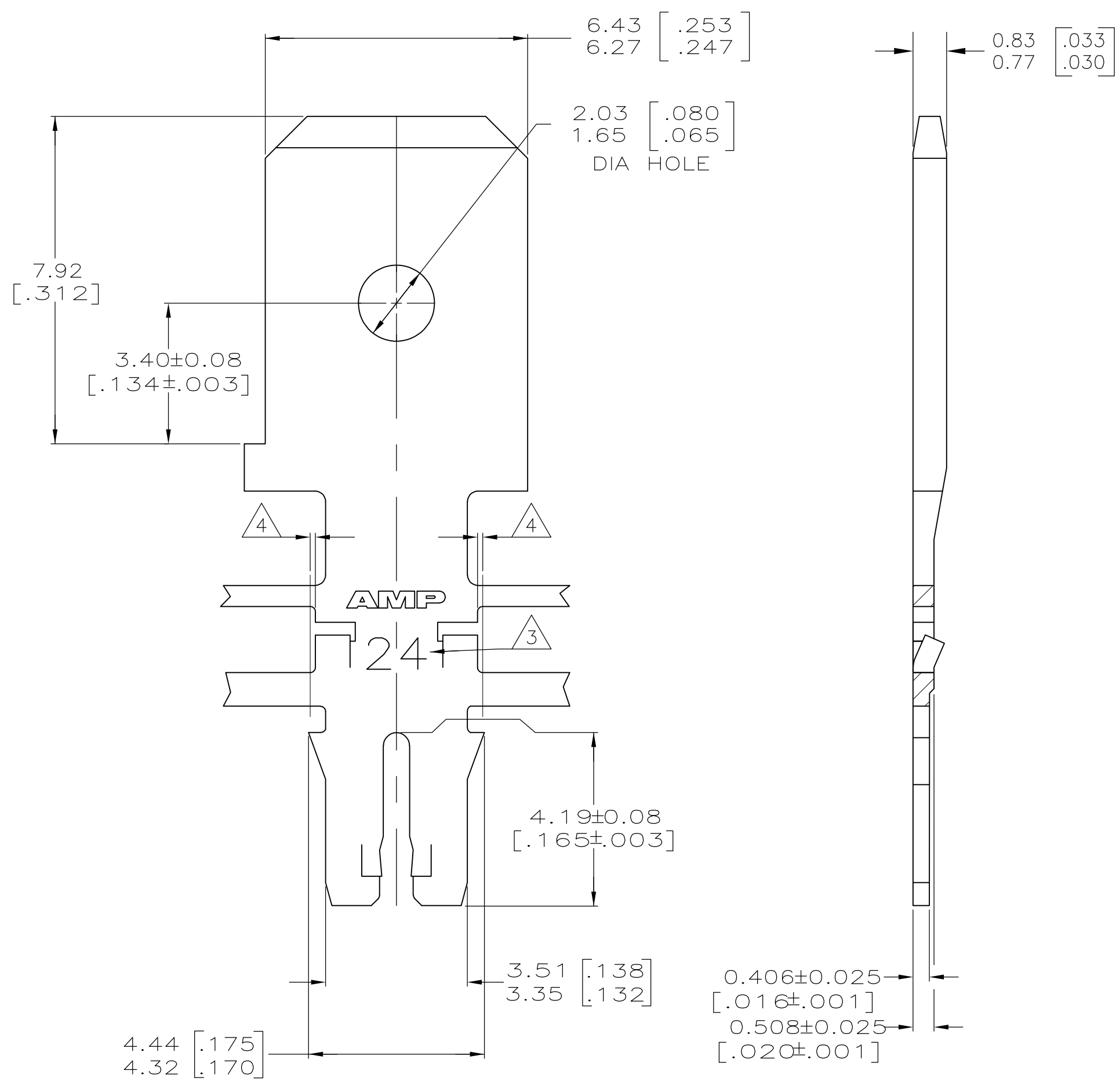


LOC	DIST	REVISIONS					
AF	50	P	LTR	DESCRIPTION	DATE	DWN	APVD
			G1	ECR-15-005665	10AUG2015	BDA	PKS

- 1 CONTINUOUS STRIP ON REELS WITH TERMINALS LOCATED ON 8.38±0.08 [.003±.003] CENTERS.
- 2 SLOT ACCEPTS 0.91-1.15mm [#19-#17] AWG COPPER MAGNET WIRE. SLOT ACCEPTS 0.95-1.15mm [#18.5-#17] AWG ALUMINUM MAGNET WIRE. ALUMINUM WIRE RANGE APPLIES FOR POST-TIN PLATED VERSIONS ONLY. ONE WIRE MAX PER SLOT
- 3 IDENTIFICATION NUMBER 24 FOR THE MAGNET WIRE SLOT SIZE
- 4 0.25[.010] MAX CARRIER CUT-OFF TABS
- 5 PRE-PRODUCTION - F.A.S.R. REQUIRED.



OBSOLETE	082 PRE-MILLED BRASS	5	63720-2
	<del>4M PRE-MILLED BRASS</del>		<del>63720-1</del>
MATERIAL		PART NUMBER	

THIS DRAWING IS A CONTROLLED DOCUMENT.		DWN	L.A.MAYER	9-27-93	TE connectivity TAB, 6.35 [.250] FASTON™ MAG-MATE™ Slim Line	
DIMENSIONS: mm [INCHES]		CHK	M.S. FEHER	9-27-93		
TOLERANCES UNLESS OTHERWISE SPECIFIED:		APVD	A. HUNT III	9-27-93		
0 PLC ± - 1 PLC ± - 2 PLC ± 0.13 [.005] 3 PLC ± - 4 PLC ± - ANGLES ± - -		PRODUCT SPEC	108-1484			
MATERIAL SEE TABLE		FINISH	0.002032 [.000080] MIN TIN PLATE		APPLICATION SPEC	114-2140
		WEIGHT	-		SIZE	A2
		CUSTOMER DRAWING		SCALE	10:1	SHEET 1 of 1
				RESTRICTED TO	-	
				REV	G1	