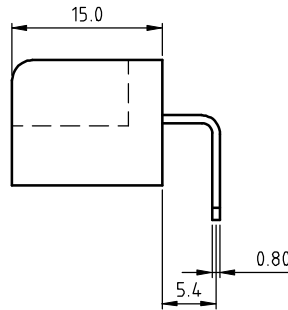
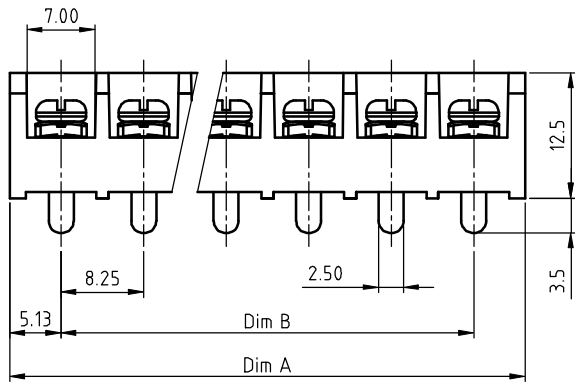
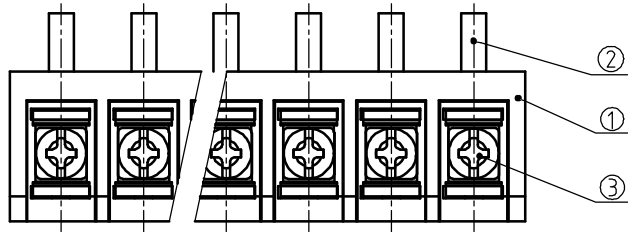


PRODUCT NUMBER	PITCH
YK334xx0x0J0G	8.25 mm



MATERIALS & ELECTRICAL
 RATED VOLTAGE & CURRENT: cULus / CQC 300 V, 20 A / 300 V, 32 A
 WITHSTAND VOLTAGE: AC 2500V/Min
 INSULATION RESISTANCE: 1000 MΩ OR MORE AT DC 500 V
 OPERATING TEMPERATURE RANG: -40 °C +115 °C
 SCREW TORQUE VALUE: 8.8 Lb-In
 WIRE RANGE: 22 - 12 AWG
 1) HOUSING: Thermoplastic, UL 94 V-0 BLACK
 2) TERMINAL: BRASS, 0.8t
 3) TERMINAL SCREWS: STEEL, M3
 APPROVAL:

DIMENSION

Dim A	N×8.25+2.0
Dim B	(N-1)×8.25

N=Number of poles

Poles	Tolerance
2p-5p	±0.20
6p-10p	±0.25
11p-16p	±0.35
17p-24p	±0.40
25p-32p	±0.50

PART NO.: YK 334xx 0 x 0 JOG

No. of poles
 02 2 poles
 03 3 poles

 32 32 poles

Code	Terminal	Screw
0	G/F	G/F
1	G/F	Zinc
2	Tin	G/F
3	Tin	Zinc

RoHS compliant
 (lead<4%)
 In copper Alloy

mat'l. code		surface ASME Y14.5 ✓	tolerance ASME Y14.5	projection 	product family TERMINAL BLOCK
ltr	ecn no	dr	date	tolerances unless otherwise specified	title TERMINAL BLOCK
				angles X°±1°	BARRIER TYPE
				scale MM	dwg no YK334xx0x0J0G
				dr EVAN LU	061614
				enr EVAN LU	061614
				chr HANKE FENG	061614
				appd SHI JUN	061614
sheet index	revision sheet	A	1		sheet 1 of 1 size A4
					type CUSTOMER Drawing